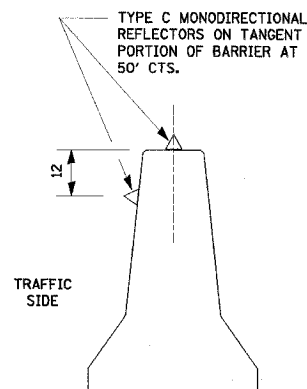
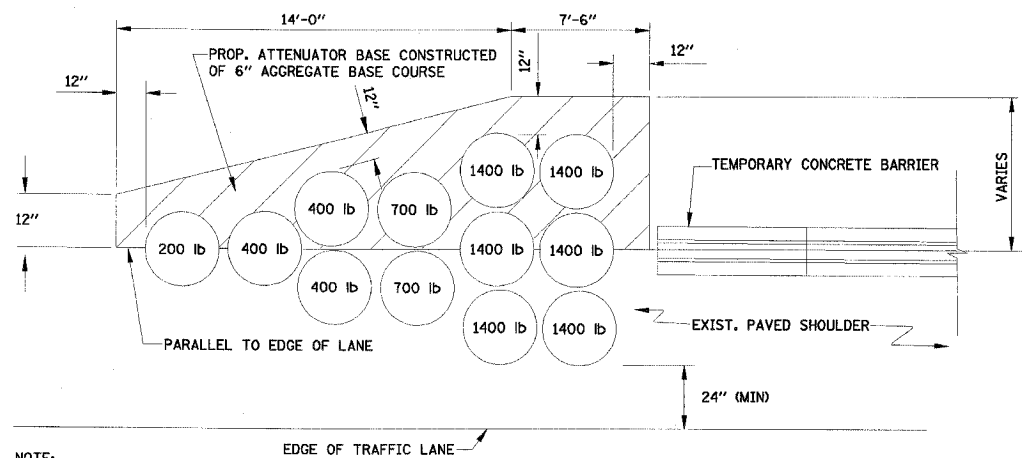


| | | | | |
|---------------------|-----------|----------------|------------------|-----------|
| RT. | SECTION | COUNTY | TOTAL SHEETS | SHEET NO. |
| FAI 80 | (50-2)HBR | LA SALLE | 460 | 69 |
| STA. 663+50 | | TO STA. 676+50 | | |
| FED. ROAD DIST. NO. | | ILLINOIS | FED. AID PROJECT | |

CONTRACT NO. 86603

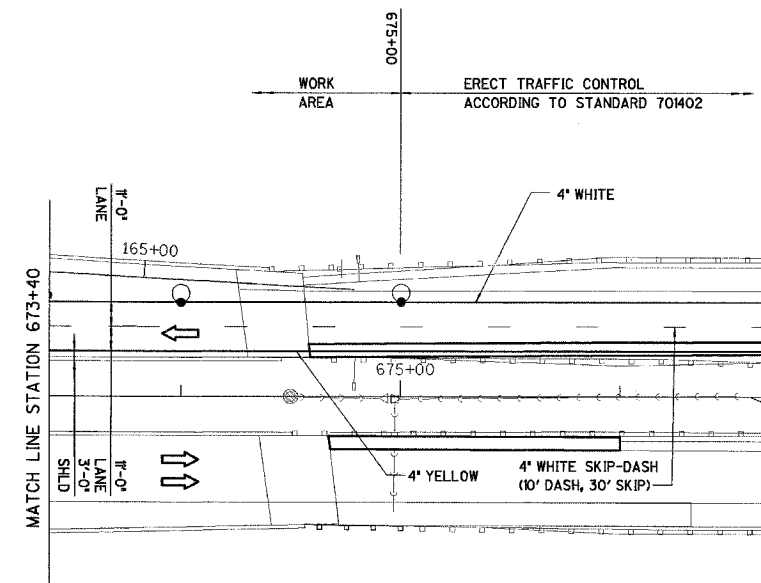


DETAIL A
(BARRIER WALL REFLECTORS)

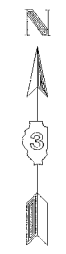
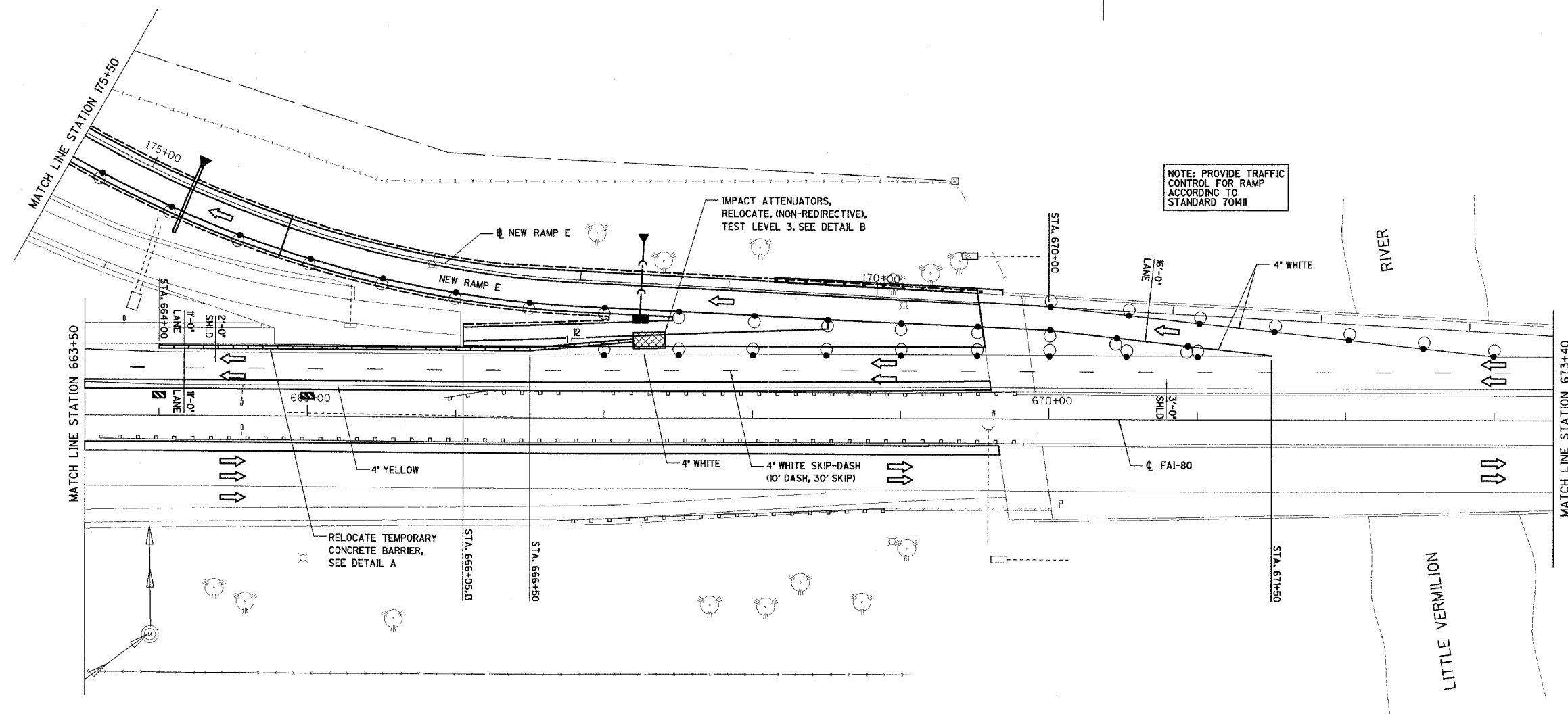


DETAIL B
IMPACT ATTENUATORS, TEMPORARY OR RELOCATED
(NON-REDIRECTIVE), TEST LEVEL 3

NOTE: CONSTRUCTION AND REMOVAL OF ATTENUATOR BASE SHALL BE INCLUDED IN THE COST OF THE IMPACT ATTENUATOR INSTALLATION.



NOTE: ADVANCE WARNING SIGNS TO BE SAME AS STAGE IIIc



| REVISIONS | NAME | DATE |
|-----------|------|------|
| | | |
| | | |
| | | |
| | | |

ILLINOIS DEPARTMENT OF TRANSPORTATION

STAGE IIIb CONSTRUCTION PLAN

F.A.L. 80 AT ILLINOIS ROUTE 351
STATION 663+50 TO STATION 676+50

DATE: 09/04
DRAWN BY: MES
CHECKED BY: MTD

SCALE IN FEET: 0 40 80