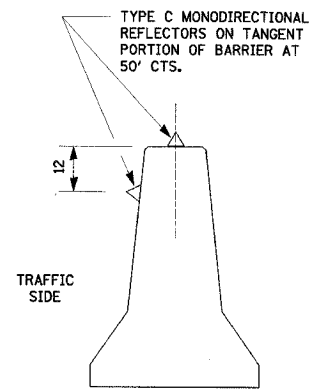


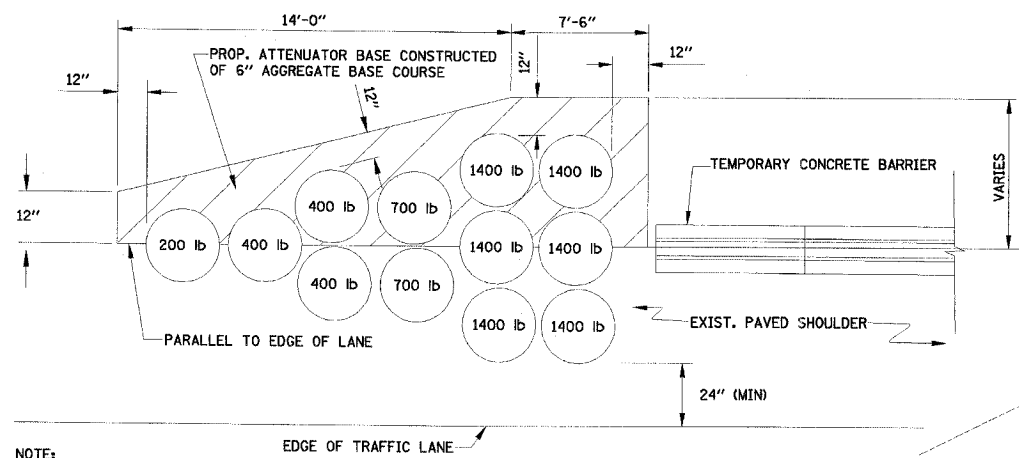
RTE.	SECTION	COUNTY	TOTAL SHEETS	SHEET NO.
FAI 80	(50-2)HBR	LA SALLE	460	71
STA. 631+20	TO STA. 643+00			
FED. ROAD DIST. NO.	ILLINOIS	FED. AID PROJECT		

CONTRACT NO. 86603



DETAIL A

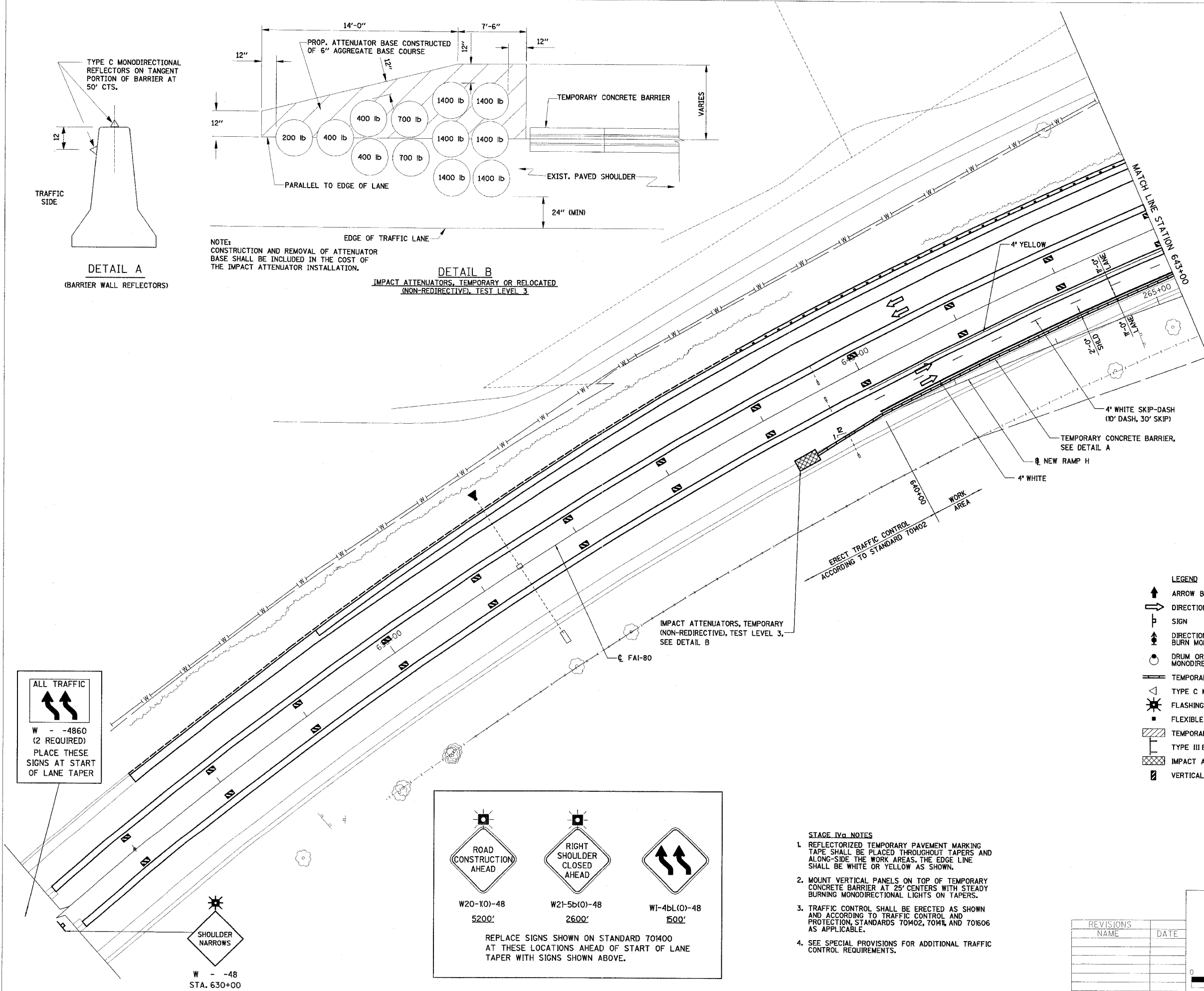
(BARRIER WALL REFLECTORS)



DETAIL B

IMPACT ATTENUATORS, TEMPORARY OR RELOCATED  
(NON-REDIRECTIVE, TEST LEVEL 3)

NOTE:  
CONSTRUCTION AND REMOVAL OF ATTENUATOR  
BASE SHALL BE INCLUDED IN THE COST OF  
THE IMPACT ATTENUATOR INSTALLATION.



ALL TRAFFIC  
↑↑  
W - -4860  
(2 REQUIRED)  
PLACE THESE  
SIGNS AT START  
OF LANE TAPER

W20-K0-48  
 5200'

W21-5b(0)-48  
 2600'

W1-4bL(0)-48  
 1500'

REPLACE SIGNS SHOWN ON STANDARD 701400  
AT THESE LOCATIONS AHEAD OF START OF LANE  
TAPER WITH SIGNS SHOWN ABOVE.

- LEGEND
- ↑ ARROW BOARD
  - ⇨ DIRECTION OF TRAFFIC
  - ⊥ SIGN
  - ↑ DIRECTION INDICATOR BARRICADE WITH STEADY BURN MONODIRECTIONAL LIGHT
  - ⊙ DRUM OR BARRICADE WITH STEADY BURN MONODIRECTIONAL LIGHT
  - ▬ TEMPORARY CONCRETE BARRIER
  - △ TYPE C MONODIRECTIONAL REFLECTOR
  - ⚡ FLASHING LIGHT
  - FLEXIBLE DELINEATOR
  - ▨ TEMPORARY WIDENING
  - ⊥ TYPE III BARRICADE
  - ▩ IMPACT ATTENUATORS
  - ▭ VERTICAL PANEL

- STAGE IVa NOTES
- REFLECTORIZED TEMPORARY PAVEMENT MARKING TAPE SHALL BE PLACED THROUGHOUT TAPERS AND ALONG-SIDE THE WORK AREAS. THE EDGE LINE SHALL BE WHITE OR YELLOW AS SHOWN.
  - MOUNT VERTICAL PANELS ON TOP OF TEMPORARY CONCRETE BARRIER AT 25' CENTERS WITH STEADY BURNING MONODIRECTIONAL LIGHTS ON TAPERS.
  - TRAFFIC CONTROL SHALL BE ERECTED AS SHOWN AND ACCORDING TO TRAFFIC CONTROL AND PROTECTION STANDARDS 70402, 70414, AND 70106 AS APPLICABLE.
  - SEE SPECIAL PROVISIONS FOR ADDITIONAL TRAFFIC CONTROL REQUIREMENTS.

REVISIONS	DATE
NAME	

ILLINOIS DEPARTMENT OF TRANSPORTATION

STAGE IVa CONSTRUCTION PLAN

F.A.I. 80 AT ILLINOIS ROUTE 351  
STATION 631+20 TO STATION 643+00

0 40 80  
SCALE IN FEET

DATE: 03/04  
DRAWN BY: MES  
CHECKED BY: MTD