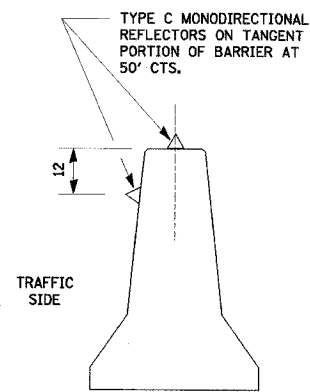
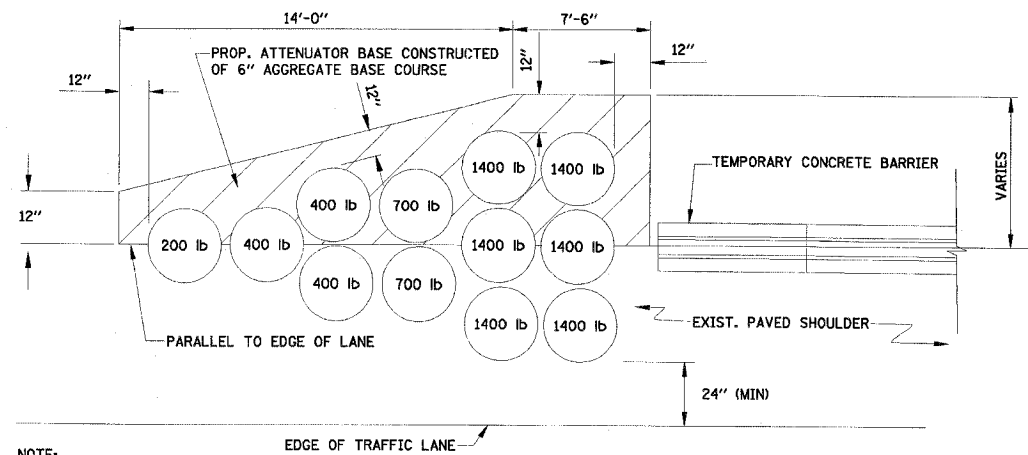


RTE.	SECTION	COUNTY	TOTAL SHEETS	SHEET NO.
FAI 80	150-2HBR	LA SALLE	460	76
STA. 643+00		TO STA. 653+75		
FED. ROAD DIST. NO.		ILLINOIS FED. AID PROJECT		

CONTRACT NO. 86603

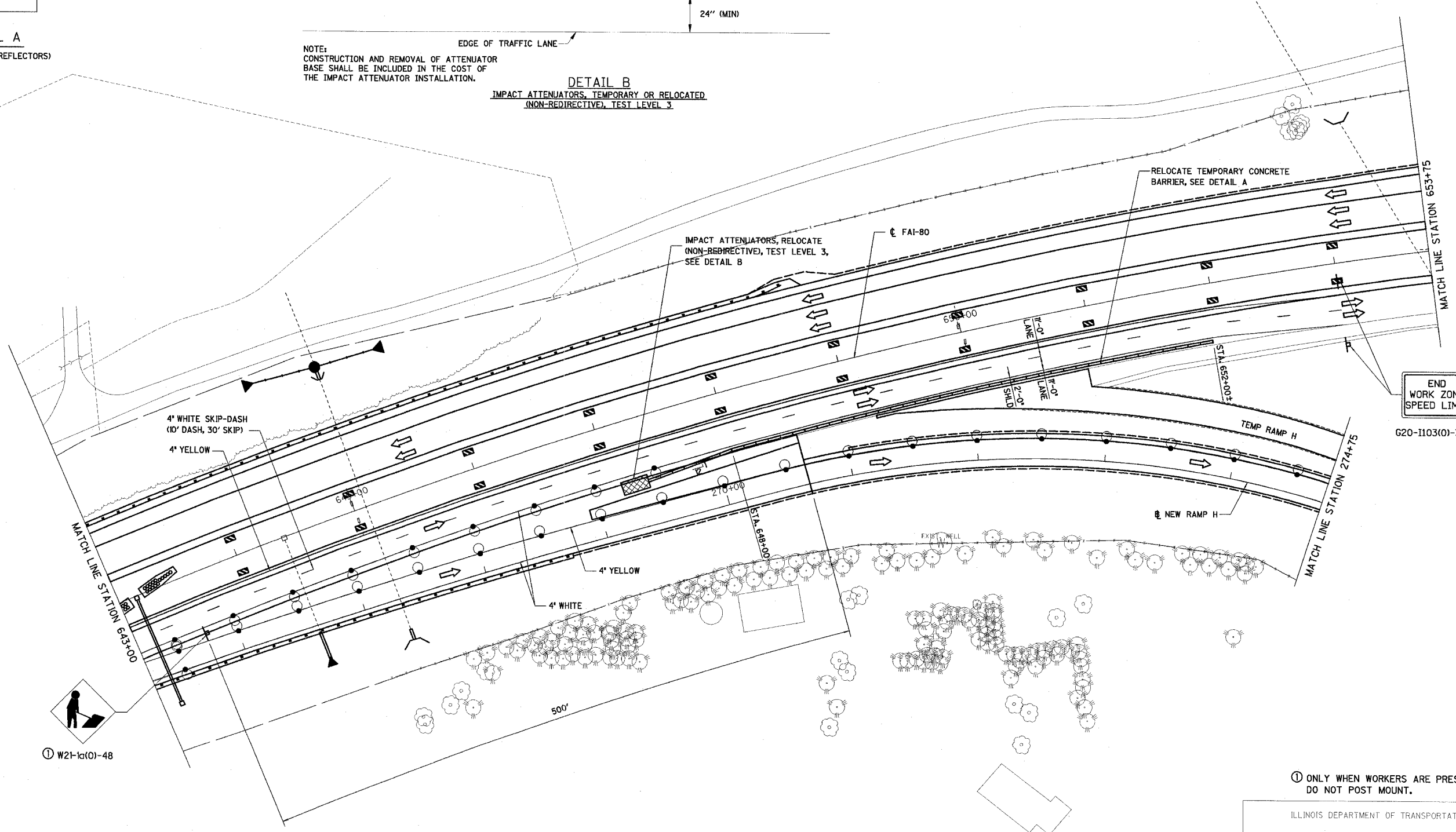


DETAIL A
(BARRIER WALL REFLECTORS)



DETAIL B
IMPACT ATTENUATORS, TEMPORARY OR RELOCATED
(NON-REDIRECTIVE), TEST LEVEL 3

NOTE:
CONSTRUCTION AND REMOVAL OF ATTENUATOR
BASE SHALL BE INCLUDED IN THE COST OF
THE IMPACT ATTENUATOR INSTALLATION.



END
WORK ZONE
SPEED LIMIT

G20-1103(0)-3660

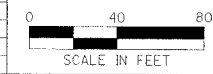
① ONLY WHEN WORKERS ARE PRESENT.
DO NOT POST MOUNT.

ILLINOIS DEPARTMENT OF TRANSPORTATION

STAGE IVb CONSTRUCTION PLAN

F.A.I. 80 AT ILLINOIS ROUTE 351
STATION 643+00 TO STATION 653+75

REVISIONS	NAME	DATE



DATE: 09/04
DRAWN BY: MES
CHECKED BY: MTD