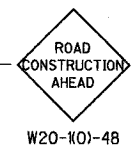
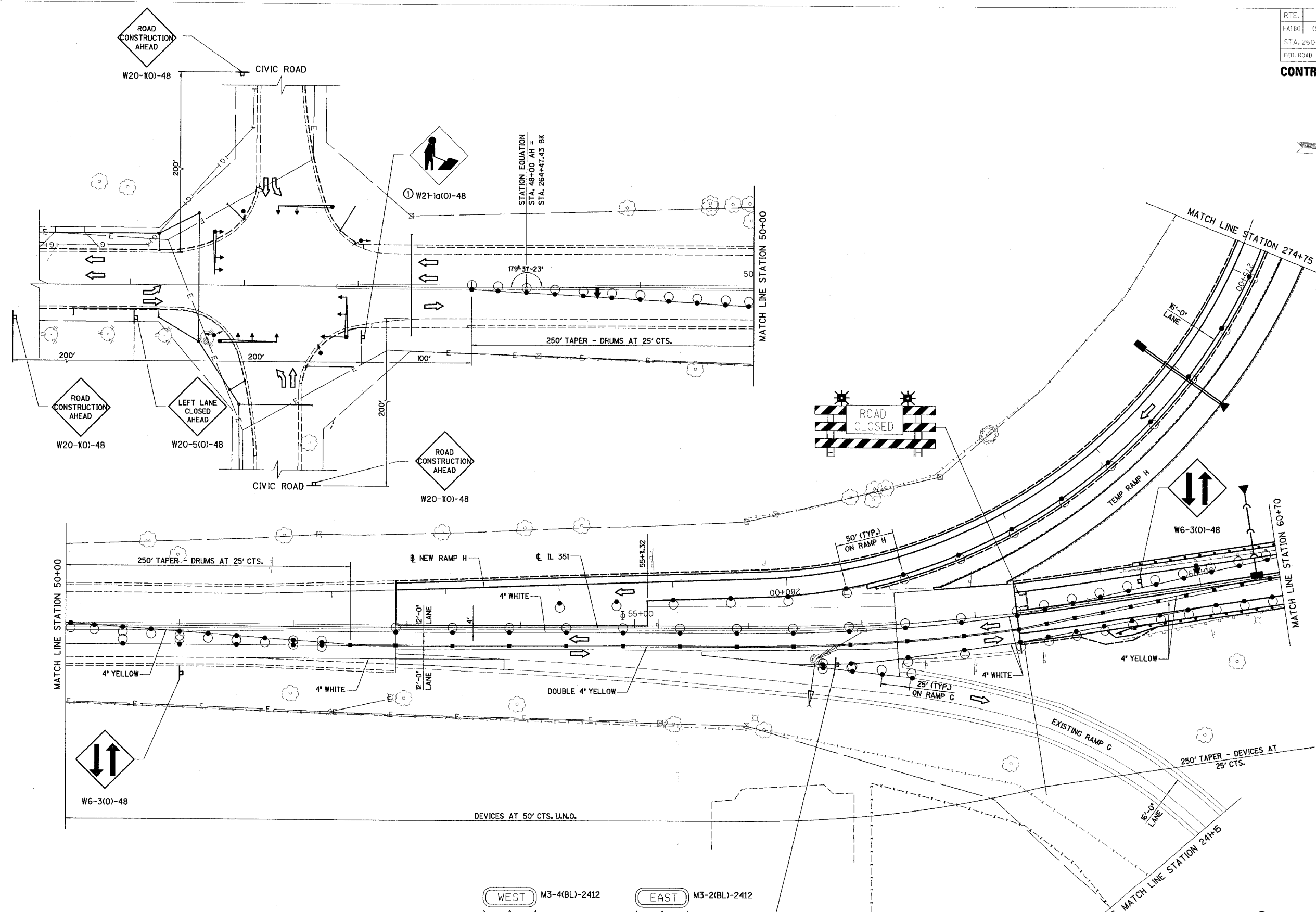
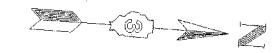


RTE.	SECTION	COUNTY	TOTAL SHEETS	SHEET NO.
F4180	150-2HBR	LA SALLE	460	78
STA. 260+50		TO STA. 60+70		
FED. ROAD DIST. NO.		ILLINOIS FED. AID PROJECT		

CONTRACT NO. 86603



W20-K0)-48



W20-5(0)-48



W20-K0)-48



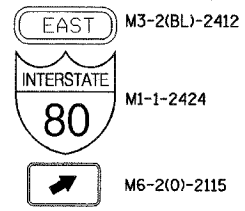
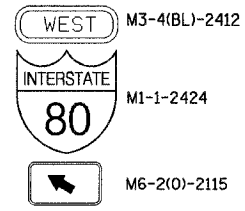
W21-1a(0)-48



W6-3(0)-48



W6-3(0)-48



M6-2(0)-2115

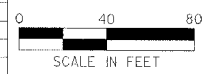


M6-2(0)-2115

① ONLY WHEN WORKERS ARE PRESENT.
DO NOT POST MOUNT.

ILLINOIS DEPARTMENT OF TRANSPORTATION
STAGE IVb CONSTRUCTION PLAN
F.A.I. 80 AT ILLINOIS ROUTE 351
STATION 260+50 TO STATION 60+70

REVISIONS	NAME	DATE



DATE: 09/04
DRAWN BY: MES
CHECKED BY: MTD