

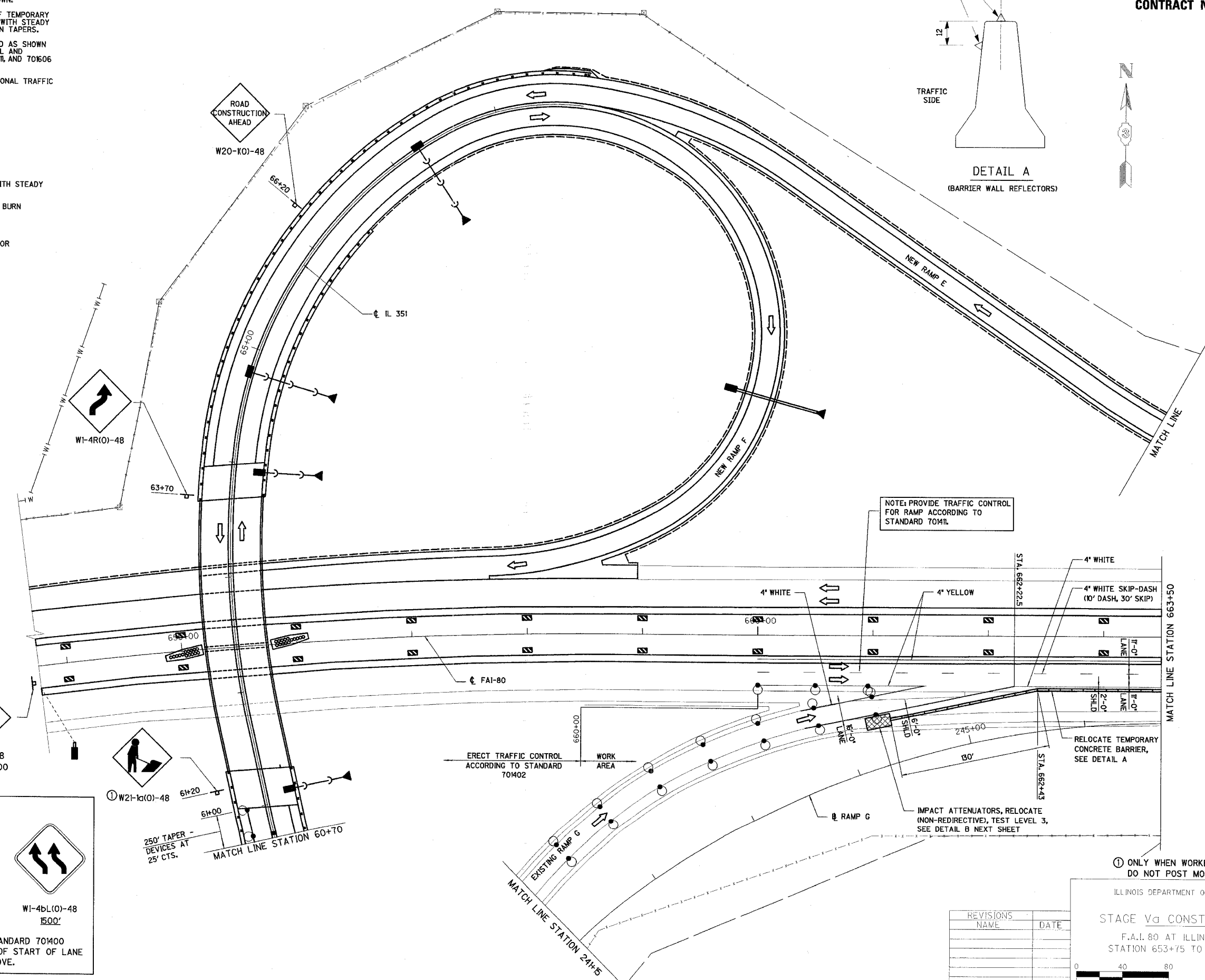
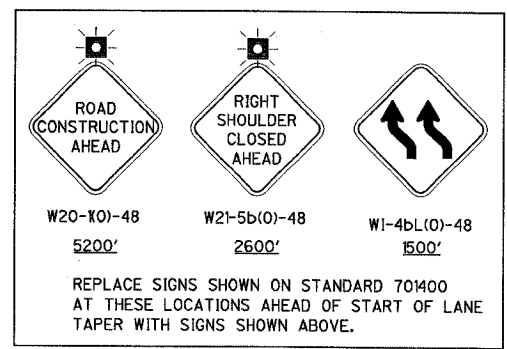
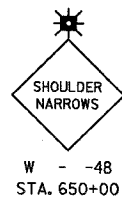
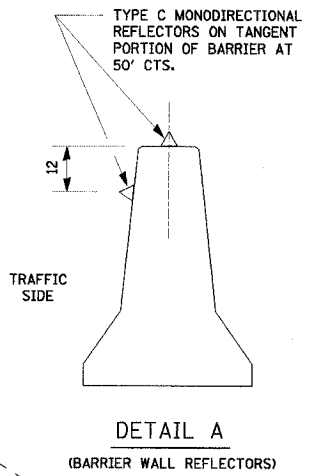
ROUTE	SECTION	COUNTY	TOTAL SHEETS	SHEET NO.
FAI 80	(50-2)HBR	LA SALLE	40	79
STA. 653+75		TO STA. 663+50		
FED. ROAD DIST. NO.	ILLINOIS	FED. AID PROJECT		

CONTRACT NO. 86603

STAGE Vd NOTES

- REFLECTORIZED TEMPORARY PAVEMENT MARKING TAPE SHALL BE PLACED THROUGHOUT TAPERS AND ALONG-SIDE THE WORK AREAS. THE EDGE LINE SHALL BE WHITE OR YELLOW AS SHOWN.
- MOUNT VERTICAL PANELS ON TOP OF TEMPORARY CONCRETE BARRIER AT 25' CENTERS WITH STEADY BURNING MONODIRECTIONAL LIGHTS ON TAPERS.
- TRAFFIC CONTROL SHALL BE ERECTED AS SHOWN AND ACCORDING TO TRAFFIC CONTROL AND PROTECTION STANDARDS 70402, 70414, AND 70606 AS APPLICABLE.
- SEE SPECIAL PROVISIONS FOR ADDITIONAL TRAFFIC CONTROL REQUIREMENTS.

- LEGEND
- ↑ ARROW BOARD
 - DIRECTION OF TRAFFIC
 - ⊥ SIGN
 - ⬆ DIRECTION INDICATOR BARRICADE WITH STEADY BURN MONODIRECTIONAL LIGHT
 - ⊙ DRUM OR BARRICADE WITH STEADY BURN MONODIRECTIONAL LIGHT
 - ▬ TEMPORARY CONCRETE BARRIER
 - △ TYPE C MONODIRECTIONAL REFLECTOR
 - ⚡ FLASHING LIGHT
 - FLEXIBLE DELINEATOR
 - ▨ TEMPORARY WIDENING
 - ⊥ TYPE III BARRICADE
 - ⊗ IMPACT ATTENUATORS
 - ▭ VERTICAL PANEL



NOTE: PROVIDE TRAFFIC CONTROL FOR RAMP ACCORDING TO STANDARD 70414.

ERECT TRAFFIC CONTROL ACCORDING TO STANDARD 70402 WORK AREA

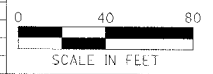
RELOCATE TEMPORARY CONCRETE BARRIER, SEE DETAIL A

IMPACT ATTENUATORS, RELOCATE (NON-REDIRECTIVE), TEST LEVEL 3, SEE DETAIL B NEXT SHEET

① ONLY WHEN WORKERS ARE PRESENT. DO NOT POST MOUNT.

ILLINOIS DEPARTMENT OF TRANSPORTATION
 STAGE Vd CONSTRUCTION PLAN
 F.A.I. 80 AT ILLINOIS ROUTE 351
 STATION 653+75 TO STATION 663+50

REVISIONS	NAME	DATE



DATE: 09/04
 DRAWN BY: MES/DWH
 CHECKED BY: MFD