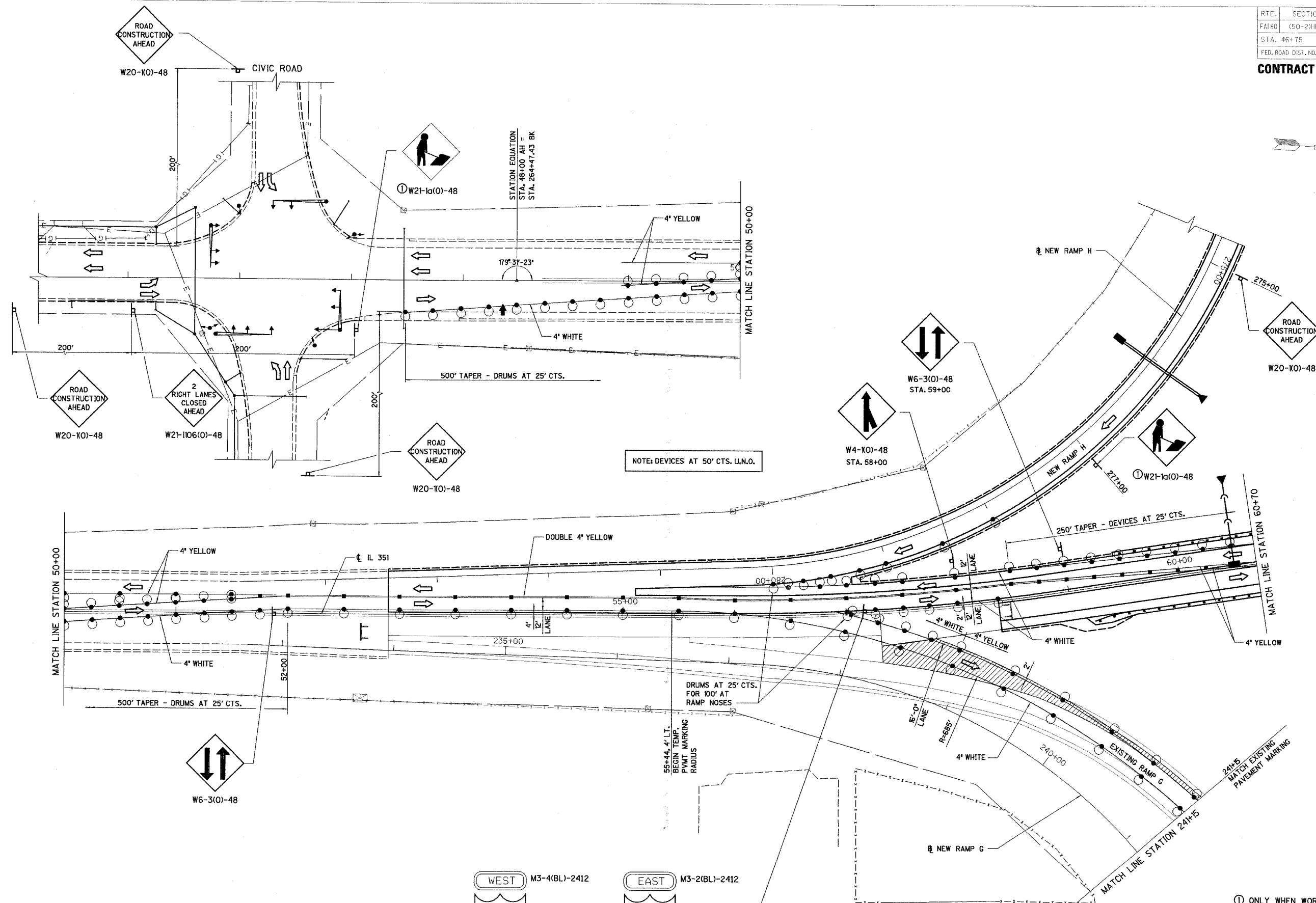


RTE.	SECTION	COUNTY	TOTAL SHEETS	SHEET NO.
FAI 80	(50-2)HBR	LA SALLE	460	81
STA. 46+75		TO STA. 60+70		
FED. ROAD DIST. NO.		ILLINOIS	FED. AID PROJECT	

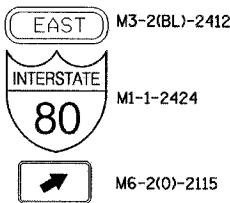
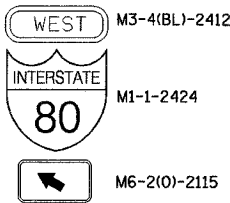
CONTRACT NO. 86603



NOTE: DEVICES AT 50' CTS. U.N.O.

DRUMS AT 25' CTS. FOR 100' AT RAMP NOSES

55+44.4' L.T. BEGIN TEMP. PAVT. MARKING RADIUS

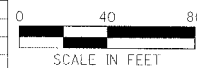


① ONLY WHEN WORKERS ARE PRESENT. DO NOT POST MOUNT.

ILLINOIS DEPARTMENT OF TRANSPORTATION

STAGE Va CONSTRUCTION PLAN

F.A.I. 80 AT ILLINOIS ROUTE 351
STATION 46+75 TO STATION 60+70



DATE: 09/04
DRAWN BY: MES/DWH
CHECKED BY: MTD

REVISIONS NAME	DATE