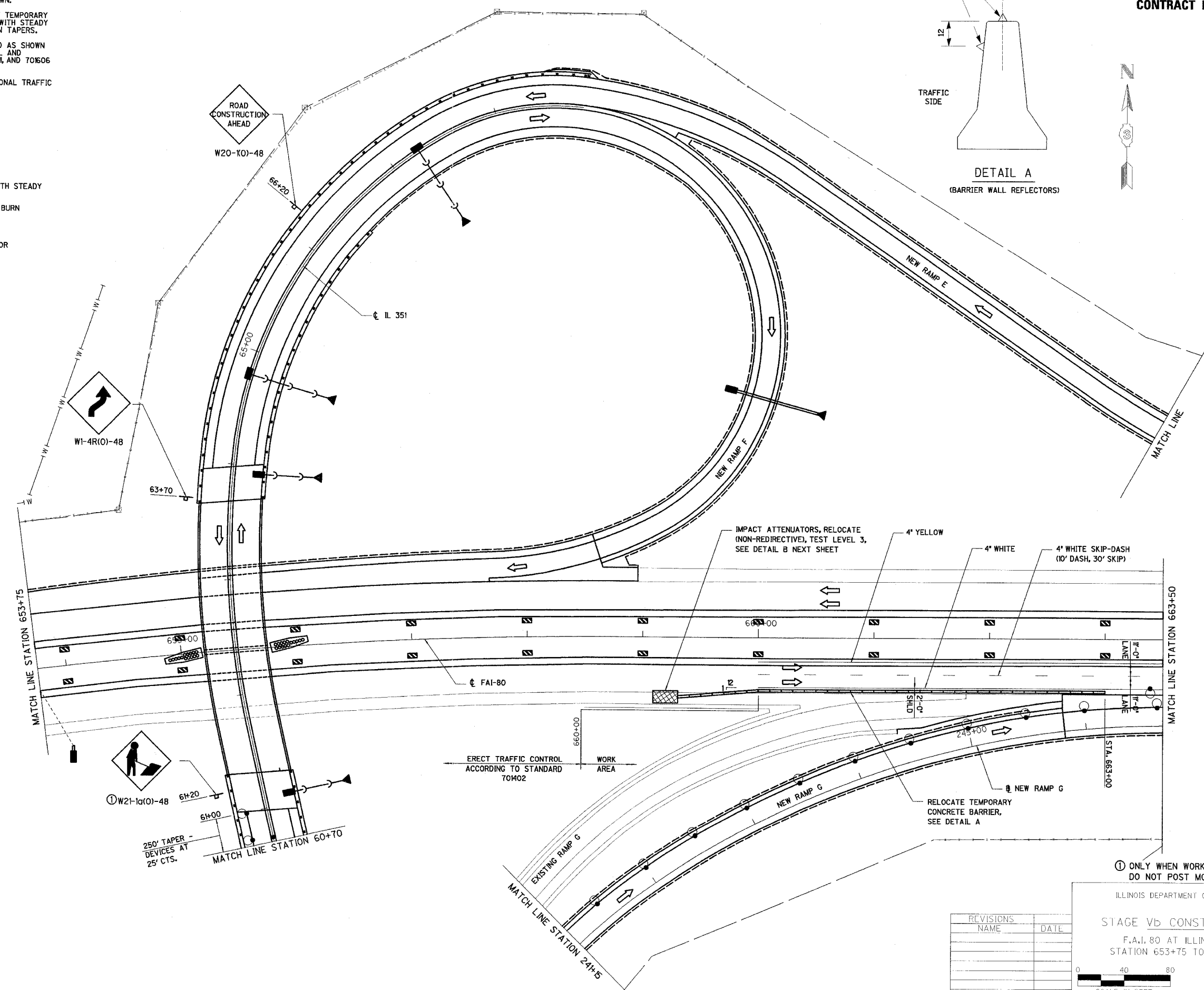
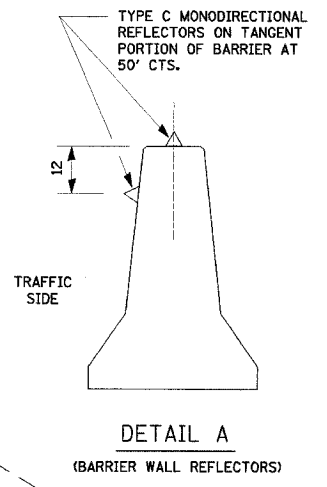


RTE.	SECTION	COUNTY	TOTAL SHEETS	SHEET NO.
FAI 80	(50-2)HBR	LA SALLE	40	82
STA. 653+75		TO STA. 663+50		
FED. ROAD DIST. NO.		ILLINOIS	FED. AID PROJECT	

CONTRACT NO. 86603

- STAGE Vb NOTES**
- REFLECTORIZED TEMPORARY PAVEMENT MARKING TAPE SHALL BE PLACED THROUGHOUT TAPERS AND ALONG-SIDE THE WORK AREAS, THE EDGE LINE SHALL BE WHITE OR YELLOW AS SHOWN.
 - MOUNT VERTICAL PANELS ON TOP OF TEMPORARY CONCRETE BARRIER AT 25' CENTERS WITH STEADY BURNING MONODIRECTIONAL LIGHTS ON TAPERS.
 - TRAFFIC CONTROL SHALL BE ERECTED AS SHOWN AND ACCORDING TO TRAFFIC CONTROL AND PROTECTION STANDARDS 70402, 70411, AND 70606 AS APPLICABLE.
 - SEE SPECIAL PROVISIONS FOR ADDITIONAL TRAFFIC CONTROL REQUIREMENTS.

- LEGEND**
- ↑ ARROW BOARD
 - DIRECTION OF TRAFFIC
 - ⊥ SIGN
 - ⬆ DIRECTION INDICATOR BARRICADE WITH STEADY BURN MONODIRECTIONAL LIGHT
 - ⊙ DRUM OR BARRICADE WITH STEADY BURN MONODIRECTIONAL LIGHT
 - ▬ TEMPORARY CONCRETE BARRIER
 - △ TYPE C MONODIRECTIONAL REFLECTOR
 - ⚡ FLASHING LIGHT
 - FLEXIBLE DELINEATOR
 - ▨ TEMPORARY WIDENING
 - ⊥ TYPE III BARRICADE
 - ▩ IMPACT ATTENUATORS
 - ▭ VERTICAL PANEL



NOTE: ADVANCE WARNING SIGNS TO BE SAME AS STAGE Va



250' TAPER - DEVICES AT 25' CTS.

ERECT TRAFFIC CONTROL ACCORDING TO STANDARD 70402

WORK AREA

IMPACT ATTENUATORS, RELOCATE (NON-REDIRECTIVE), TEST LEVEL 3, SEE DETAIL B NEXT SHEET

4" YELLOW

4" WHITE

4" WHITE SKIP-DASH (10' DASH, 30' SKIP)

2'-0" SHIELD

RELOCATE TEMPORARY CONCRETE BARRIER, SEE DETAIL A

① ONLY WHEN WORKERS ARE PRESENT. DO NOT POST MOUNT.

REVISIONS	NAME	DATE

ILLINOIS DEPARTMENT OF TRANSPORTATION

STAGE Vb CONSTRUCTION PLAN

F.A.I. 80 AT ILLINOIS ROUTE 351
STATION 653+75 TO STATION 663+50

DATE: 03/04
DRAWN BY: MES/DWH
CHECKED BY: MTD