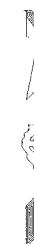


RTE.	SECTION	COUNTY	TOTAL SHEETS	SHEET NO.
FAI 80	(50-2)HBR	LA SALLE	460	88
STA. 663+50		TO STA. 676+50		
FED. ROAD DIST. NO.		ILLINOIS	FED. AID PROJECT	

**CONTRACT NO. 86603**



S-1  
STA 174+70, 59.0' LT, RAMP E  
PRC FLARED END SECTION, 30" W/ GRATE  
INV =610.6

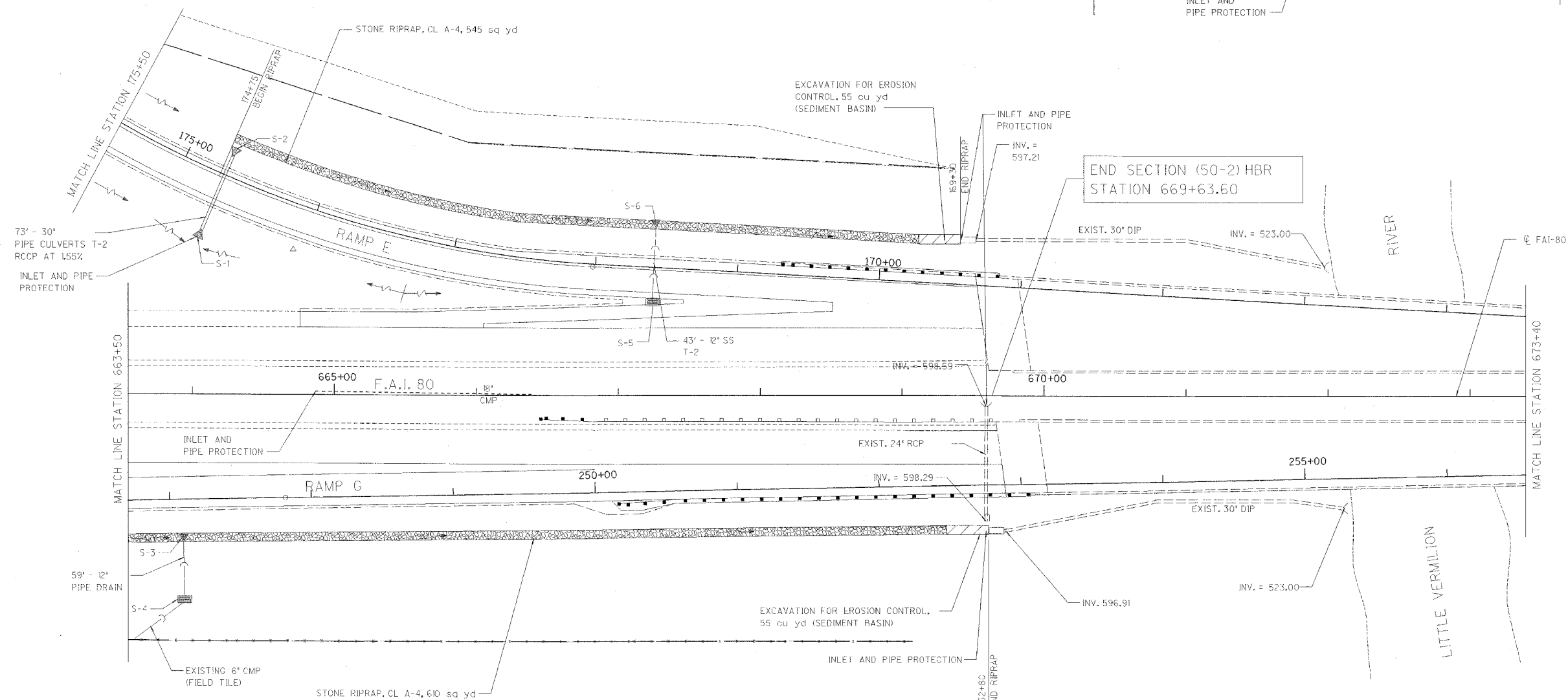
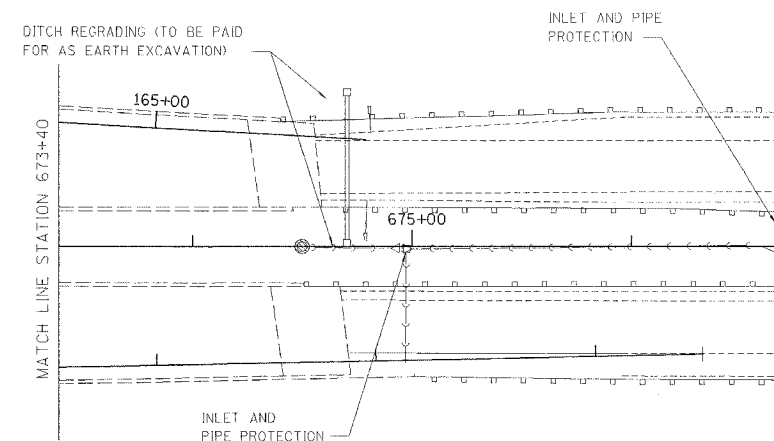
S-2  
STA 174+70, 31.0' RT, RAMP E  
PRC FLARED END SECTION, 30" W/ GRATE  
INV =609.58

S-3  
STA 246+88, 32.0' RT, RAMP G  
END SECTION, 12"  
INV =612.70

S-4  
STA 246+88, 90.2' RT, RAMP G  
FIELD TILE JUNCTION VAULT, 24" DIA,  
TYPE 1, FR. & CLOSED LID  
ELEV=628.38  
INV =622.70(N)

S-5  
STA 174+59, 23.0' LT, RAMP E  
INLET TYPE A, TYPE 1 FRAME AND OPEN LID  
ELEV. =608.86  
INV =604.86

S-6  
STA 174+62, 26.3' RT, RAMP E  
PRC FLARED END SECTION, 12"  
INV =604.30



REVISIONS	NAME	DATE

ILLINOIS DEPARTMENT OF TRANSPORTATION  
**EROSION CONTROL AND DRAINAGE PLAN**  
 F.A.I. 80 AT ILLINOIS ROUTE 351  
 STATION 663+50 TO STATION 676+50  
 DATE: 09/04  
 DRAWN BY: JOK  
 CHECKED BY: MID