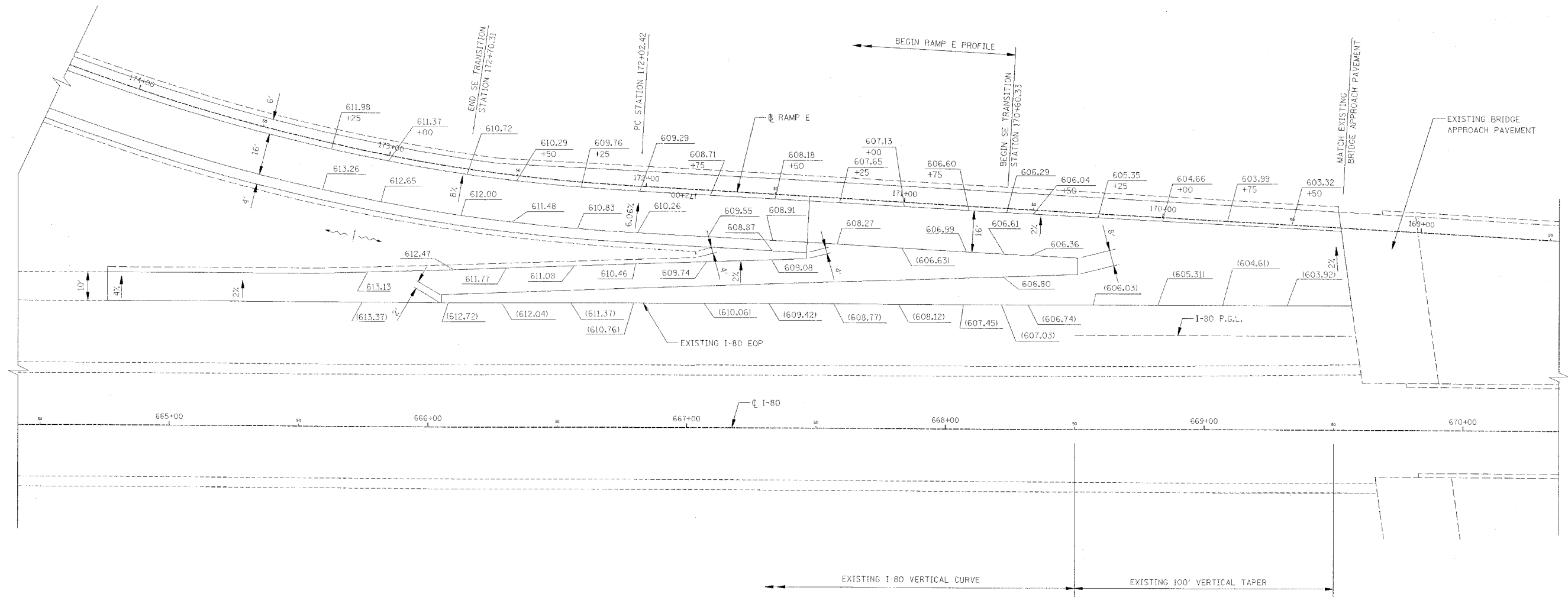


RTE.	SECTION	COUNTY	TOTAL SHEETS	SHEET NO.
FAI80	(50-2) IIBR	LA SALLE	460	91
STA.		TO STA.		
FED. ROAD DIST. NO.		ILLINOIS FED. AID PROJECT		

CONTRACT NO. 86603



LEGEND

(XXX.XXX) EXISTING ELEVATION
 XXX.XXX PROPOSED ELEVATION

RAMP TERMINAL ELEVATIONS

NOTES

1. FOR ADDITIONAL RAMP DETAILS, SEE ROADWAY PLAN SHEETS

REVISIONS NAME	DATE

ILLINOIS DEPARTMENT OF TRANSPORTATION
RAMP TERMINAL ELEVATIONS
 F.A.I. 80 AT ILLINOIS ROUTE 351
 RAMP E

DATE: 09/04
 DRAWN BY: JJK
 CHECKED BY: MTD

SCALE IN FEET