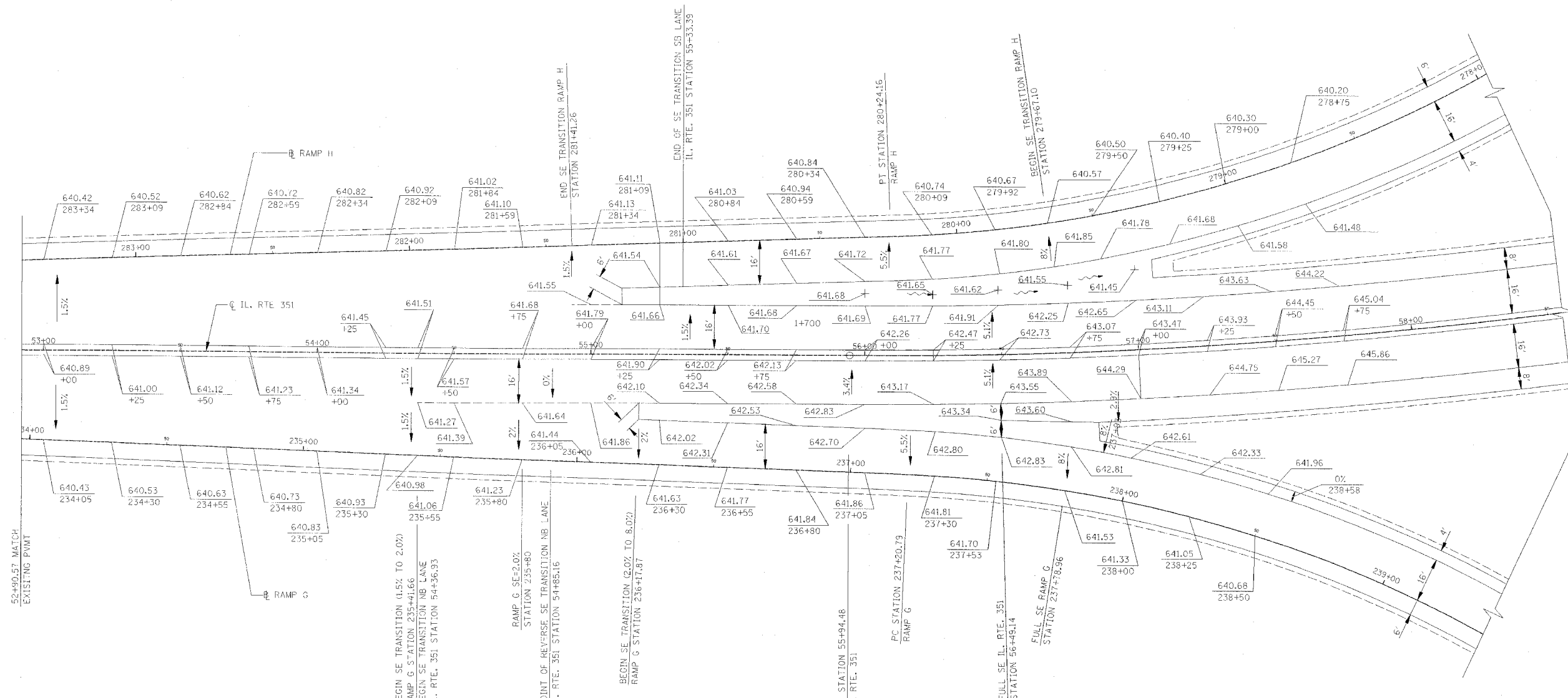


|                     |           |                  |              |           |
|---------------------|-----------|------------------|--------------|-----------|
| RTE.                | SECTION   | COUNTY           | TOTAL SHEETS | SHEET NO. |
| FA180               | (50-2)HBR | LA SALLE         | 460          | 94        |
| STA.                | TO STA.   |                  |              |           |
| FED. ROAD DIST. NO. | ILLINOIS  | FED. AID PROJECT |              |           |

**CONTRACT NO. 86603**



**LEGEND**

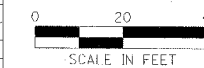
XXXX.XXX      EXISTING ELEVATION  
 XXX.XXX      PROPOSED ELEVATION

**NOTES**

FOR ADDITIONAL RAMP DETAILS, SEE ROADWAY PLAN SHEETS

| REVISIONS | DATE |
|-----------|------|
|           |      |
|           |      |
|           |      |
|           |      |
|           |      |

ILLINOIS DEPARTMENT OF TRANSPORTATION  
**RAMP TERMINAL ELEVATIONS**  
 F.A.I. 80 AT ILLINOIS ROUTE 351  
 RAMP G AND RAMP H



DATE: 09/04  
 DRAWN BY: JDK  
 CHECKED BY: MTD