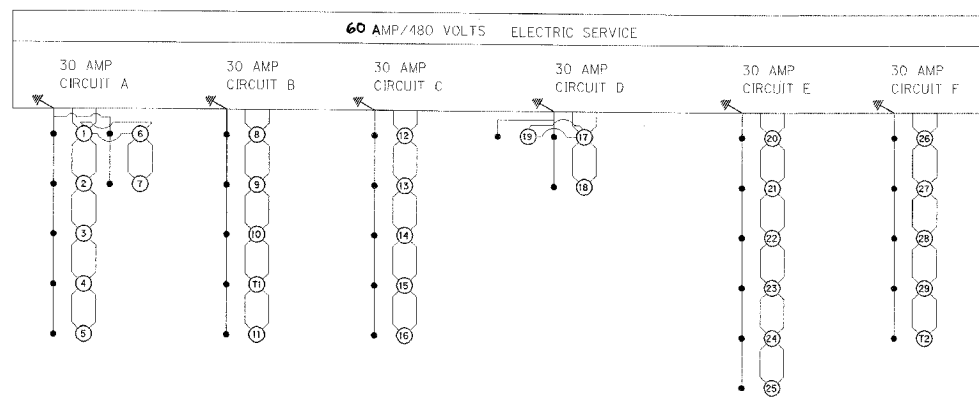
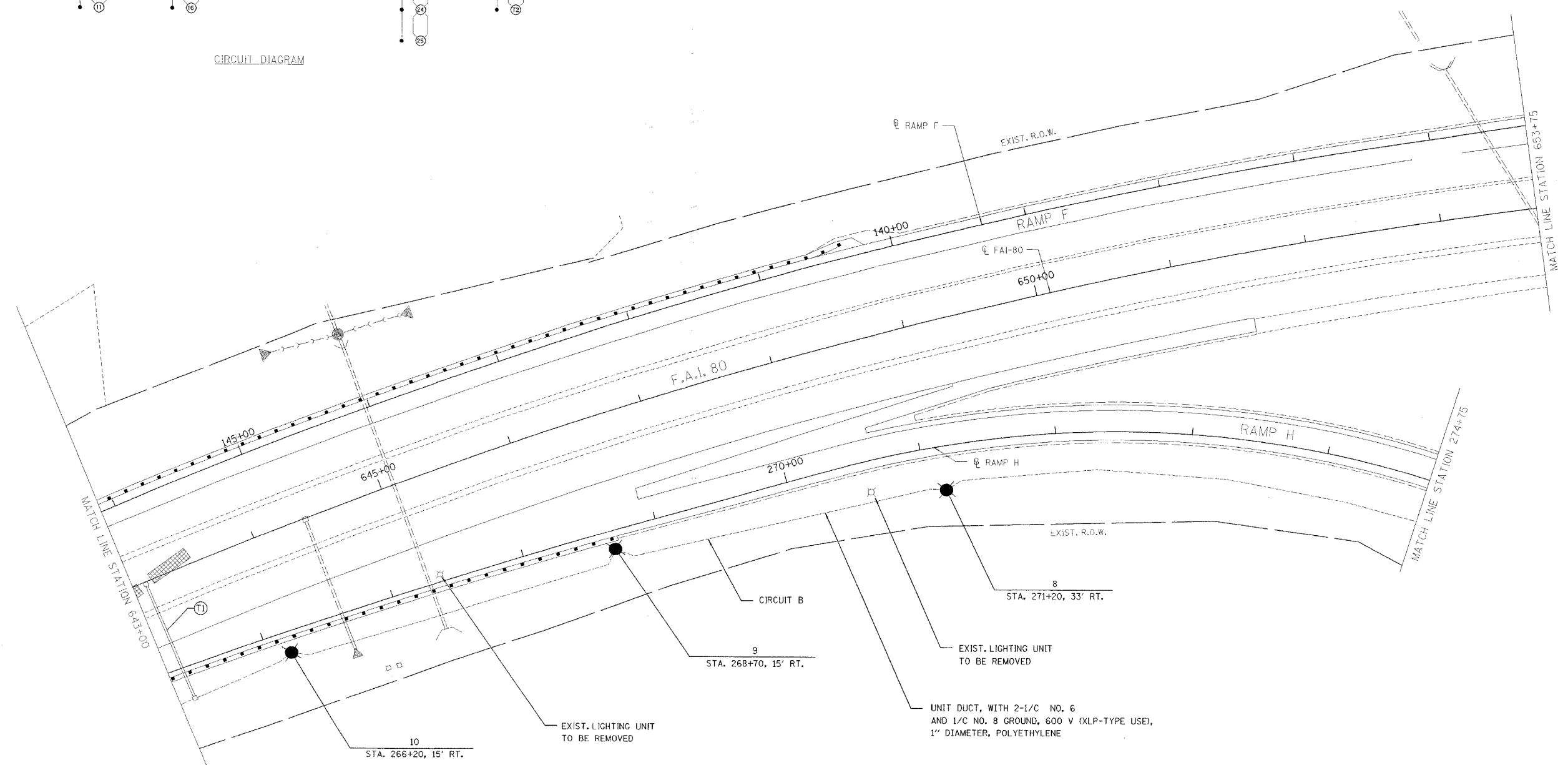


RTF.	SECTION	COUNTY	TOTAL SHEETS	SHEET NO.
FAI 80	150-21HBR	LA SALLE	460	102
STA. 643+00		TO STA. 653+75		
FED. ROAD DIST. NO.		ILLINOIS	FED. AID PROJECT	

**CONTRACT NO. 86603**



CIRCUIT DIAGRAM



REVISIONS	NAME	DATE

ILLINOIS DEPARTMENT OF TRANSPORTATION

**ROADWAY LIGHTING PLAN**

F.A.I. 80 AT ILLINOIS ROUTE 351  
STATION 643+00 TO STATION 653+75

DATE: 09/04  
DRAWN BY: JOK  
CHECKED BY: MTD

SCALE IN FEET: 0 40 80