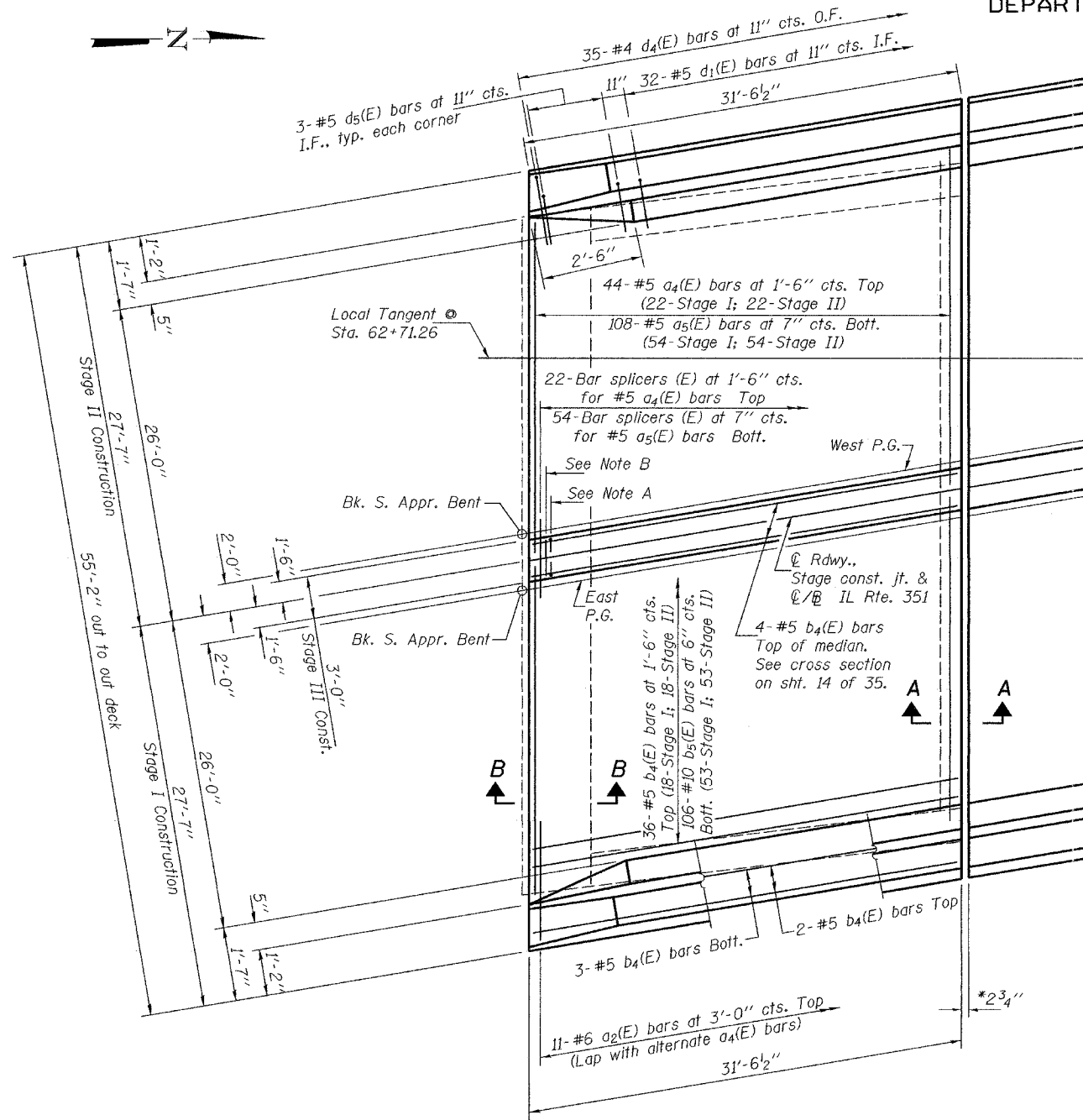


STATE OF ILLINOIS  
DEPARTMENT OF TRANSPORTATION

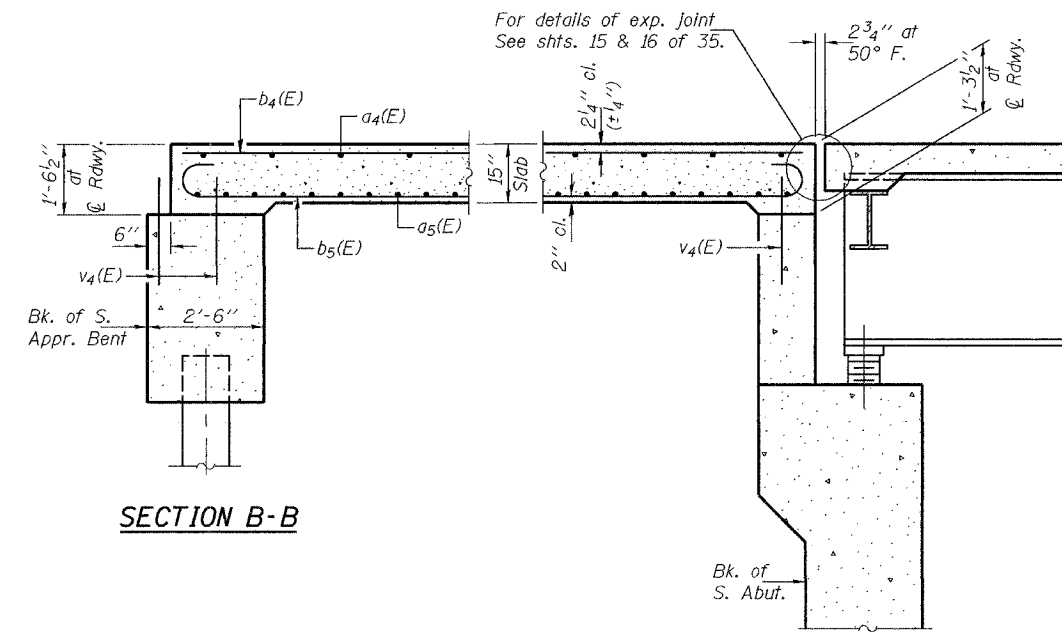
ROUTE NO.	SECTION	COUNTY	SHEET NO.	SHEET NO.
F.A.I. 80	(50-2) HBR	LaSALLE	154	35 SHEETS
FED. ROAD DIST. NO. 7		ILLINOIS	FED. AID PROJECT	
Contract No. 86603				



PLAN

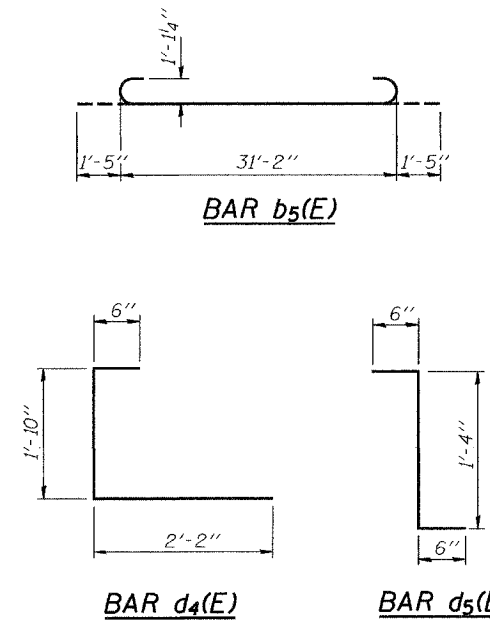
Note A: 33-#5 c(E) bars at 12" cts. Each face of median. 33-3/4"  $\phi$  Expansion anchors (E) for #5 c(E) bars. Each face of median. See cross section on sheet 14 of 35.

Note B: 33-#5 c1(E) bars at 12" cts. in top of median. See cross section on sheet 14 of 35.



SECTION B-B

SECTION A-A



BILL OF MATERIAL

Bar	No.	Size	Length	Shape
a2(E)	22	#6	4'-6"	—
a4(E)	44	#5	27'-3"	—
a5(E)	108	#5	26'-6"	—
b4(E)	50	#5	31'-2"	—
b5(E)	106	#10	34'-0"	—
c(E)	66	#5	1'-10"	┌
c1(E)	33	#5	2'-5"	—
d(E)	70	#5	3'-0"	┌
d1(E)	64	#5	2'-5"	┌
d2(E)	70	#4	3'-0"	┌
d4(E)	70	#4	4'-6"	┌
d5(E)	6	#5	2'-4"	┌
e9(E)	24	#4	15'-5"	—
e10(E)	8	#5	16'-6"	—
e11(E)	8	#8	17'-5"	—
Reinforcement Bars, Epoxy Coated			Lbs.	23230
Concrete Superstructure			Cu. Yd.	92.1

Reinforcement bars and expansion anchors designated (E) shall be epoxy coated.

Notes: For approach details and parapet reinforcement, see sheet 14 of 35. Transverse dimensions are given at right angles to base line. For details of bars c(E), d(E), d1(E) & d2(E), see sheet 10 of 35. \* Measured along local tangent at Sta. 62+71.26.

DESIGNED	RLM
CHECKED	CME
DRAWN	h.t. parsons
CHECKED	RLM/CME

Nov. 29, 2004  
EXAMINED *Thomas J. Damagalki*  
PASSED *Ralph E. Anderson*  
ENGINEER OF BRIDGES AND STRUCTURES

SOUTH APPROACH SLAB  
F.A.I. RT. 80 - SEC. (50-2)HBR  
LaSALLE COUNTY  
STATION 62+39.22  
STRUCTURE NO. 050-0230