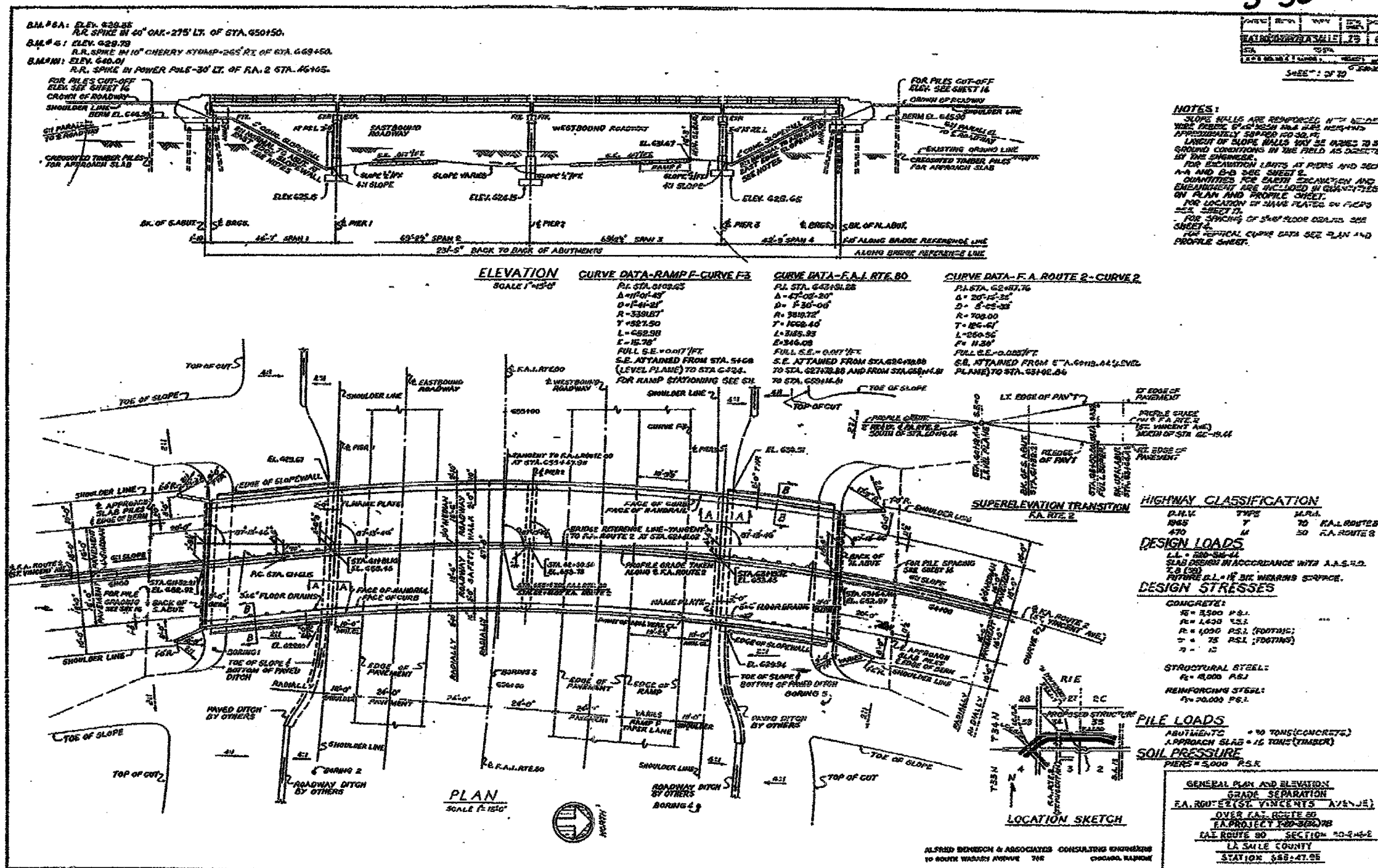


F.A.L. NO.	SECTION	COUNTY	TOTAL SHEETS	SHEET NO.
80	150-21HBR	LA SALLE	460	178
STA.	TO STA.			
FED. ROAD DIST. NO.	SLABS	FED. AID PROJECT		

CONTRACT NO. 86603

3-50



NOTES:
 SLOPE WALLS ARE REINFORCED WITH 1" X 12" BARS SPACED 12" ON CENTER AND 12" FROM FACE AND 12" FROM TOP AND BOTTOM. LENGTH OF SLOPE WALLS TO BE ADJUSTED TO FIT GROUND CONDITIONS IN THE FIELD AS DIRECTED BY THE ENGINEER.
 FOR DIMENSION LISTS AT PIERS AND SECTIONS A-A AND B-B SEE SHEET 2.
 QUANTITIES FOR EACH EXCAVATION AND EMBANKMENT ARE INCLUDED IN QUANTITIES ON PLAN AND PROFILE SHEET.
 FOR LOCATION OF DRIVE PILES ON PIER 2 SEE SHEET 11.
 FOR SPACING OF DRIVE PILES ON PIER 2 SEE SHEET 11.
 FOR VERTICAL CURVE DATA SEE PLAN AND PROFILE SHEET.

ELEVATION	CURVE DATA-RAMP F-CURVE F3	CURVE DATA-F.A.L. RTE. 80	CURVE DATA-F.A. ROUTE 2-CURVE 2
SCALE 1"=10'	P.I. STA. 6328.43 Δ=11°01'43" D=141'-21" R=3301.87' T=527.50' L=652.93' E=15.78' FULL S.E. POINT 7 FT. S.E. OBTAINED FROM STA. 5408 S.E. OBTAINED FROM STA. 5408 (LEVEL PLANE) TO STA. 6324. FOR RAMP STATIONING SEE SHEET 11.	P.I. STA. 6434.22 Δ=47°02'20" D=130'-00" R=380.72' T=1068.40' L=348.93' E=346.08' FULL S.E. POINT 7 FT. S.E. OBTAINED FROM STA. 6304.88 S.E. OBTAINED FROM STA. 6304.88 AND FROM STA. 6304.88 TO STA. 6504.14.	P.I. STA. 6547.76 Δ=20°12'32" D=130'-00" R=708.00' T=1068.40' L=348.93' E=346.08' FULL S.E. POINT 7 FT. S.E. OBTAINED FROM STA. 6547.76 S.E. OBTAINED FROM STA. 6547.76 (LEVEL PLANE) TO STA. 6547.76.

HIGHWAY CLASSIFICATION

P.R.V.	TYPE	M.R.R.
195	7	TO CAL. ROUTE 8
470	11	TO CAL. ROUTE 2

DESIGN LOADS
 LL = 200 PSF
 SLAB DESIGN IN ACCORDANCE WITH A.A.S.H.O. T-9 (93)
 FUTURE 2.1" IN BR. WEARWAYS SURFACE.

DESIGN STRESSES

CONCRETE:
 R = 3500 P.S.I.
 R = 1400 P.S.I.
 R = 1000 P.S.I. (FOOTING)
 T = 75 P.S.I. (FOOTING)
 T = 12

STRUCTURAL STEEL:
 R = 4000 P.S.I.
REINFORCING STEEL:
 R = 20,000 P.S.I.

PILE LOADS
 ABUTMENTS = 40 TONS (CONCRETE)
 APPROACH SLAB = 12 TONS (TIMBER)

SOIL PRESSURE
 PIERS = 5,000 P.S.F.

GENERAL PLAN AND ELEVATION GRADE SEPARATION
 F.A. ROUTE 2 (ST. VINCENT AVENUE)
 OVER CAL. ROUTE 80
 LA PROJECT 100-30078
 CAL. ROUTE 80 SECTION 10-2-15-E
 LA SALLE COUNTY
 STATION 558+47.25

* DATE-TIME *
 * DGN-SPEC *

FOR INFORMATION ONLY

EXISTING BRIDGE PLANS