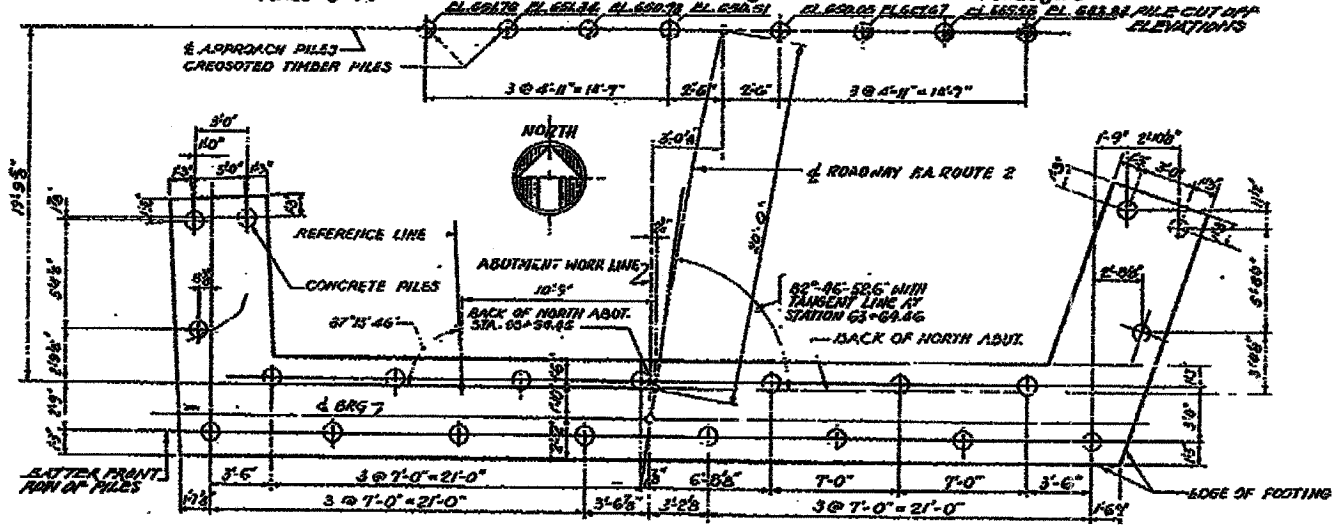
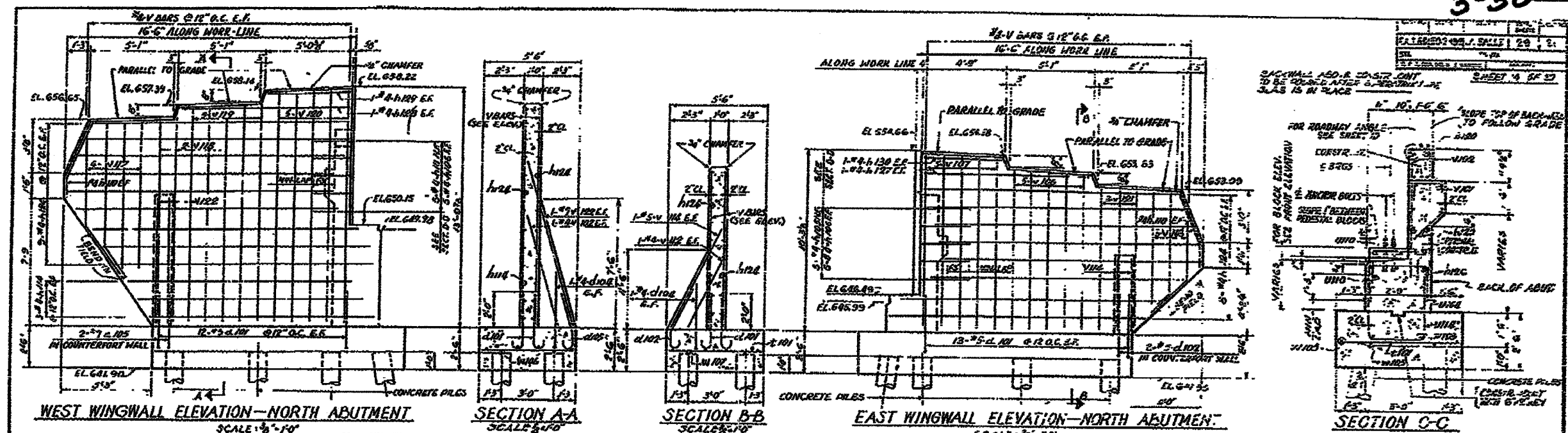


CONTRACT NO. 86603

3-50



PILE SCHEDULE

CONCRETE PILES, CAPACITY 30 TONS		
LOCATION	NO. OF PILES	LENGTH
NORTH ABUTMENT	21	26'-0"

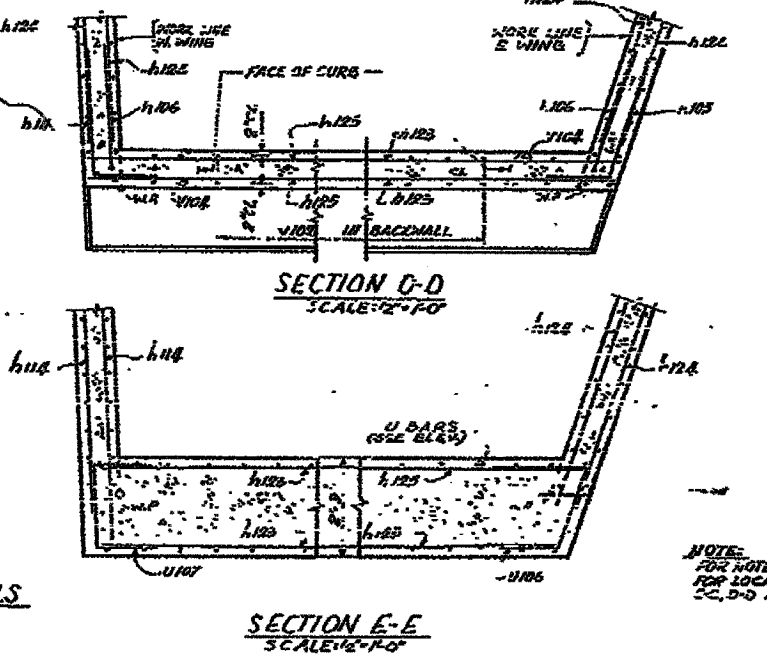
CREOSOTED TIMBER PILES, CAPACITY 15 TONS		
LOCATION	NO. OF PILES	LENGTH
NORTH APPROACH	8	27'

BILL OF MATERIAL FOR APPROACH SLAB PILES

ITEM	QUANTITY	
	UNIT	N. APPROACH
CREOSOTED TIMBER PILES, 2 1/2" TO 3 1/2" DIA.	LN. FT.	216

BILL OF MATERIAL FOR NORTH ABUTMENT & WINGWALLS

ITEM	UNIT	QUANTITY
CLASS X CONCRETE	CU YDS	77.1
REINFORCEMENT BARS	POUND	4,660
CONCRETE PILES	LN. FT.	646



NOTE: FOR NOTES SEE SHEET 3 FOR LOCATION OF SECTIONS C-C, D-D AND E-E SEE SHEET 2.

NORTH ABUTMENT DETAILS
 GRADE SEPARATION
 R.A. ROUTE 2 (ST. VINCENTS AVENUE)
 OVER ILL. ROUTE 20
 LA PROJECT
 FAC. NO. 15 ED. SEC. 12-15-52-202
 LA SALLE COUNTY
 STATION 855+47.9'

ALFRED BENSON & ASSOCIATES CONSULTING ENGINEERS
 10 SOUTH WASHINGTON AVE. CHICAGO, ILLINOIS

* DATE-TIME *
 * DON-SPEC *