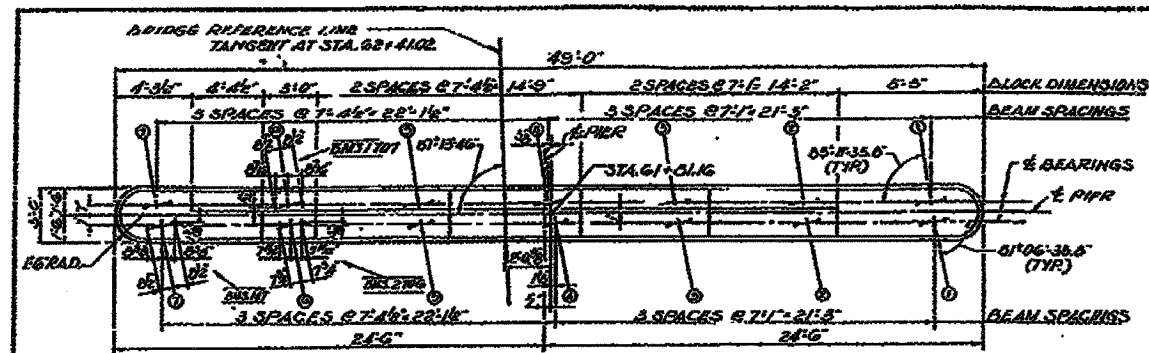
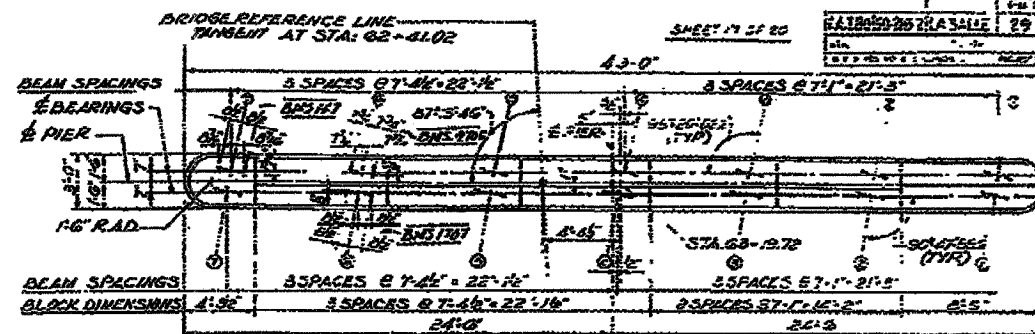


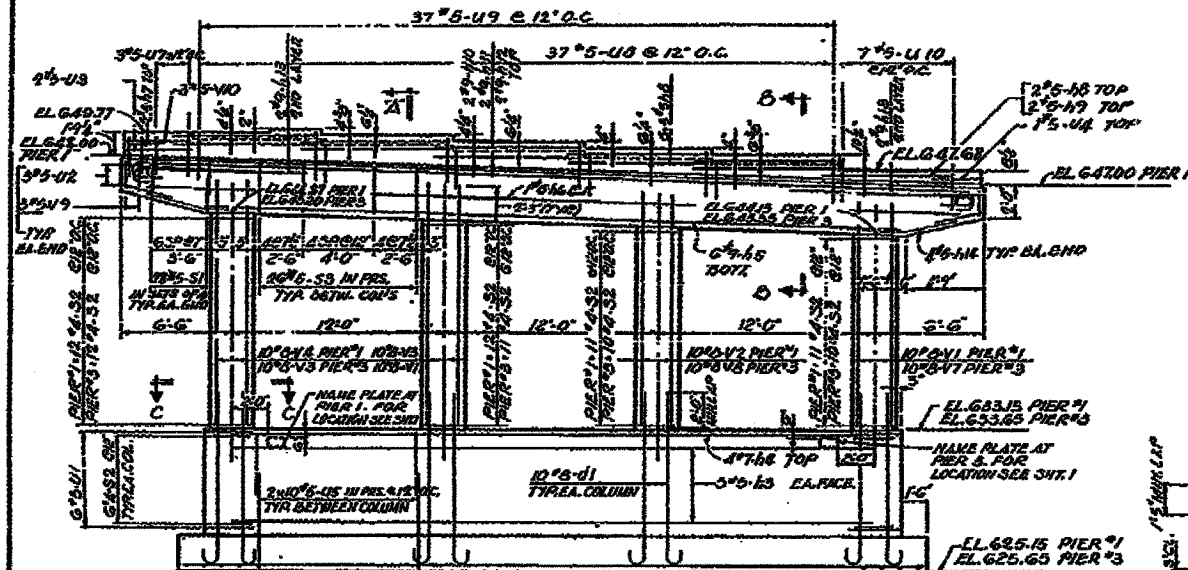
CONTRACT NO. 86603



TOP PLAN - PIER #1
SCALE 1/4"=1'-0"

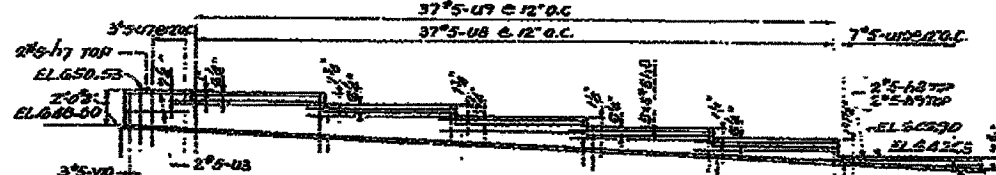


TOP PLAN - PIER #3
SCALE 1/4"=1'-0"

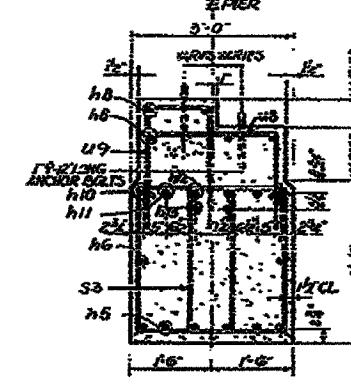


ELEVATION
SCALE 1/4"=1'-0"

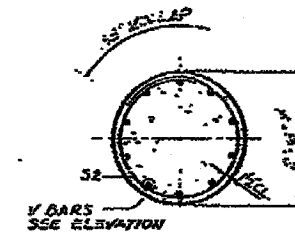
SECTION 'A-A'
SCALE 1/4"=1'-0"



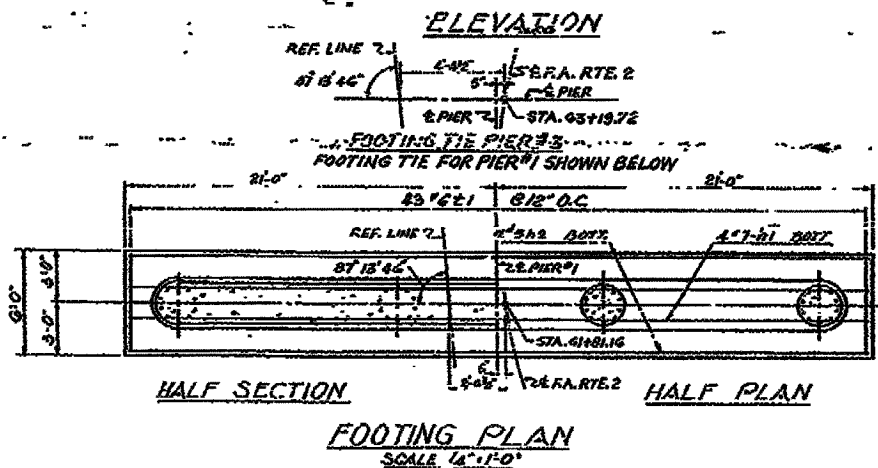
BLOCK ELEVATION OF PIER #3
SCALE 1/4"=1'-0"



SECTION 'B-B'
SCALE 1/4"=1'-0"



SECTION 'C-C'
SCALE 1/4"=1'-0"



FOOTING PLAN
SCALE 1/4"=1'-0"

NOTE:
PIER #3 SHALL BE PAURED NONLITHICALLY WITH TOP BEAM. SHALL CONFORM TO ALL INTERFERING WITH DRILLING OF HOLES FOR ANCHOR BOLTS.

SILL OF MATERIAL

ITEM	UNIT	PIER #1	PIER #3
CLASS 1 CONCRETE	CY	74.7	76.5
REINFORCEMENT BARS	POUND	9250	9500
CLASS 2 EXCAVATION	CY	85	92

PIER #3
GRADE SEPARATION
LA SALLE COUNTY
OVER SAN JOAQUIN RIVER
PROJECT
LA SALLE COUNTY
5717 N. 600th St.

ALFRED BENTON & ASSOCIATES CONSULTING ENGINEERS
10 SOUTH WABASH AVENUE CHICAGO, ILLINOIS