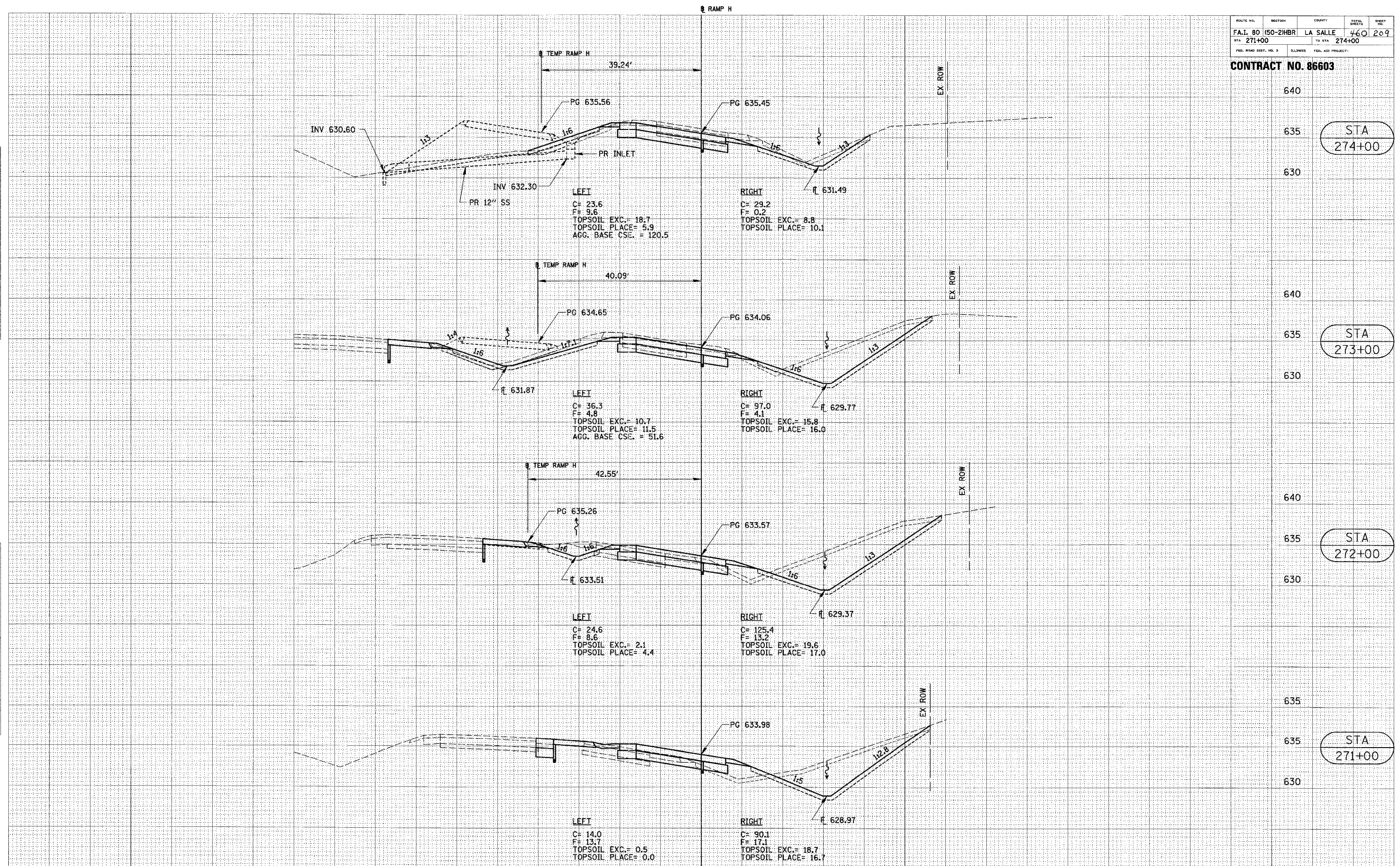


ROUTE NO.	SECTION	COUNTY	TOTAL SHEETS	SHEET NO.
FA.I. 80 (50-2)HBR	LA SALLE	460	209	
STA. 271+00			TO STA. 274+00	
FED. ROAD DIST. NO. 3	ILLINOIS	FED. AID PROJECT-		

CONTRACT NO. 86603

DATE	BY
DATE	BY
DATE	BY
DATE	BY

DATE	BY
DATE	BY
DATE	BY
DATE	BY



640	
635	STA 274+00
630	
640	
635	STA 273+00
630	
640	
635	STA 272+00
630	
635	
635	STA 271+00
630	

CROSS SECTIONS (RAMP H)

LEFT
 C= 23.6
 F= 9.6
 TOPSOIL EXC.= 18.7
 TOPSOIL PLACE= 5.9
 AGG. BASE CSE.= 120.5

RIGHT
 C= 29.2
 F= 0.2
 TOPSOIL EXC.= 8.8
 TOPSOIL PLACE= 10.1

LEFT
 C= 36.3
 F= 4.8
 TOPSOIL EXC.= 10.7
 TOPSOIL PLACE= 11.5
 AGG. BASE CSE.= 51.6

RIGHT
 C= 97.0
 F= 4.1
 TOPSOIL EXC.= 15.8
 TOPSOIL PLACE= 16.0

LEFT
 C= 24.6
 F= 8.6
 TOPSOIL EXC.= 2.1
 TOPSOIL PLACE= 4.4

RIGHT
 C= 125.4
 F= 13.2
 TOPSOIL EXC.= 19.6
 TOPSOIL PLACE= 17.0

LEFT
 C= 14.0
 F= 13.7
 TOPSOIL EXC.= 0.5
 TOPSOIL PLACE= 0.0

RIGHT
 C= 90.1
 F= 17.1
 TOPSOIL EXC.= 18.7
 TOPSOIL PLACE= 16.7