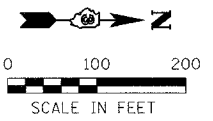


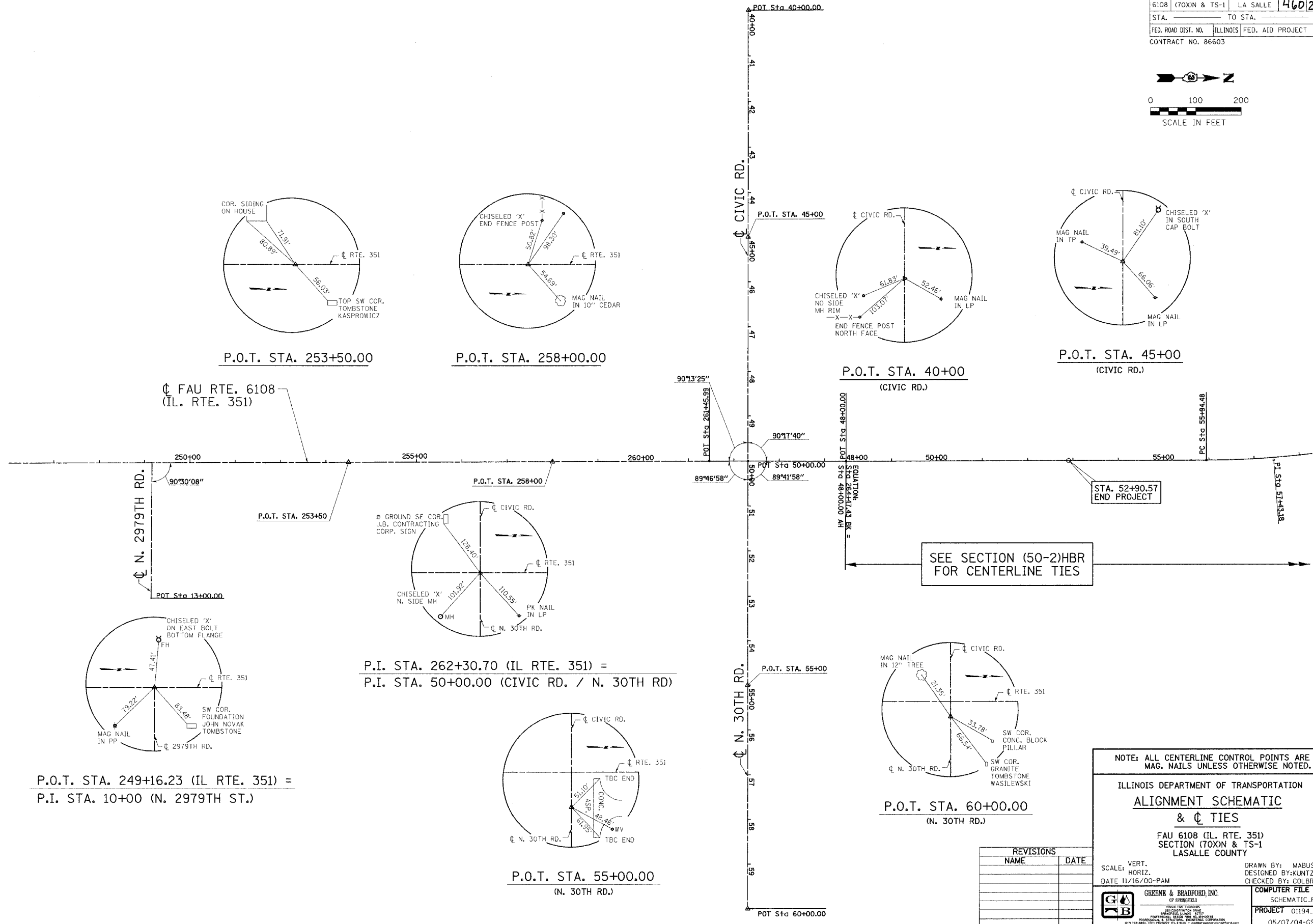
F.A. DIST. NO.	SECTION	COUNTY	TOTAL SHEETS	SHEET NO.
6108	(70XN & TS-1	LA SALLE	460	237
STA. _____ TO STA. _____		FED. ROAD DIST. NO. ILLINOIS FED. AID PROJECT		
CONTRACT NO. 86603				



DESIGN		
INT.	DATE	REASON

PLOTS & CHECKS		
INT.	DATE	REASON

CHECKS		
INT.	DATE	REASON



SEE SECTION (50-2)HBR FOR CENTERLINE TIES

P.I. STA. 262+30.70 (IL RTE. 351) =
P.I. STA. 50+00.00 (CIVIC RD. / N. 30TH RD)

P.O.T. STA. 249+16.23 (IL RTE. 351) =
P.I. STA. 10+00 (N. 2979TH ST.)

NOTE: ALL CENTERLINE CONTROL POINTS ARE
MAG. NAILS UNLESS OTHERWISE NOTED.

ILLINOIS DEPARTMENT OF TRANSPORTATION
**ALIGNMENT SCHEMATIC
& TIES**

FAU 6108 (IL. RTE. 351)
SECTION (70XN & TS-1
LASALLE COUNTY

SCALE: VERT. _____
HORIZ. _____
DATE 11/16/00-PAM

DRAWN BY: MABUS
DESIGNED BY: KUNTZMAN
CHECKED BY: COLBROOK

GREENE & BRADFORD, INC.
OF SPRINGFIELD

COMPUTER FILE NO. _____
SCHEMATIC.F

PROJECT 01194.B.N
05/07/04-GSJ

REVISIONS	
NAME	DATE