

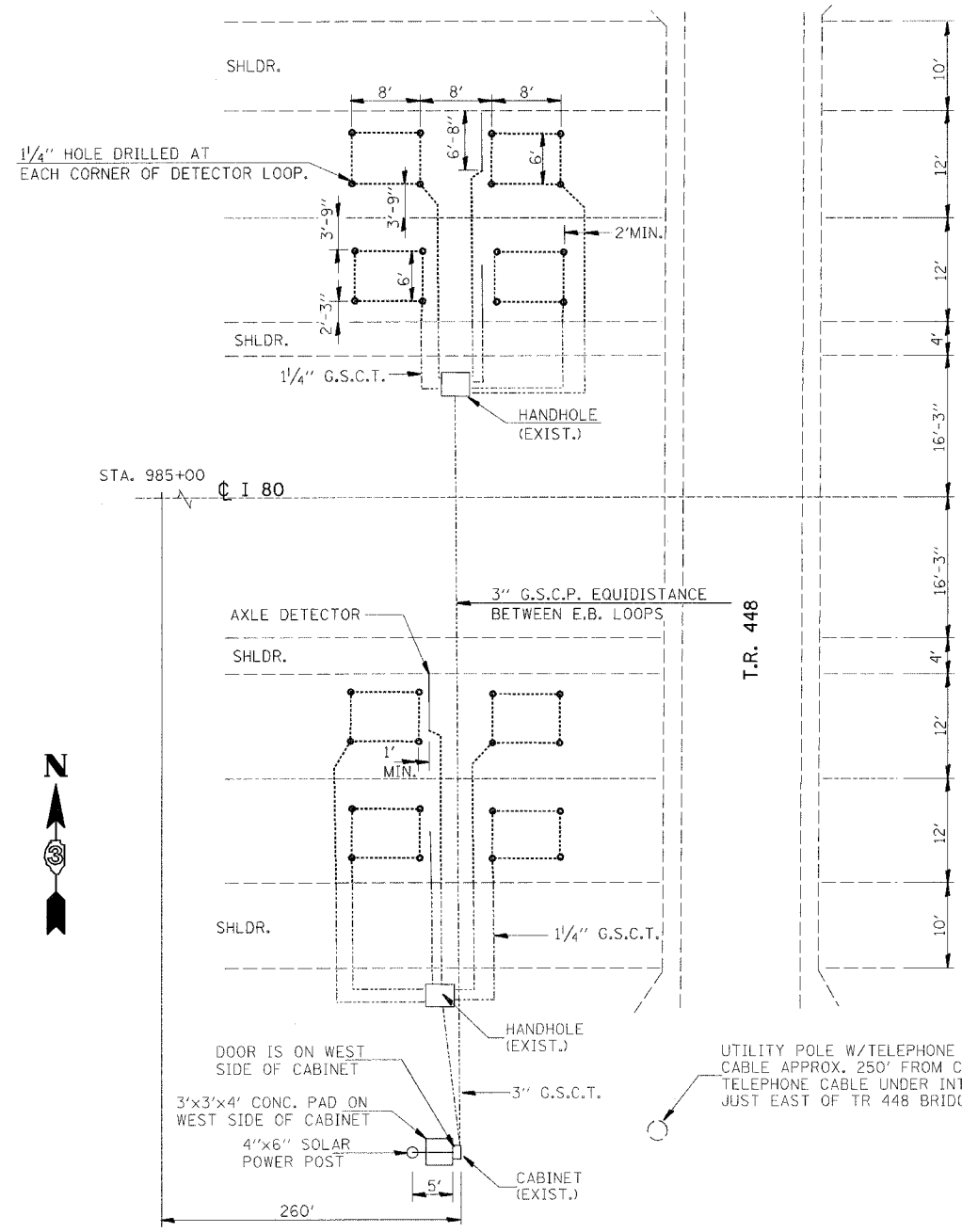
DESIGN		
INT.	DATE	REASON

F.A.U. RTE.	SECTION	COUNTY	TOTAL SHEETS	SHEET NO.
6108	(70XIN & TS-1	LA SALLE	460	347
STA.		TO STA.		
FED. ROAD DIST. NO.	ILLINOIS FED. AID PROJECT			
CONTRACT NO. 86603				

PLOTS & CHECKS		
INT.	DATE	REASON

FILE NAME = \$FILE\$  
 SCALE = \$SCALE\$  
 PLOT DATE = \$DATE\$  
 PLOT TIME = \$TIME\$  
 OPERATOR = \$USER\$

CHECKS		
INT.	DATE	REASON

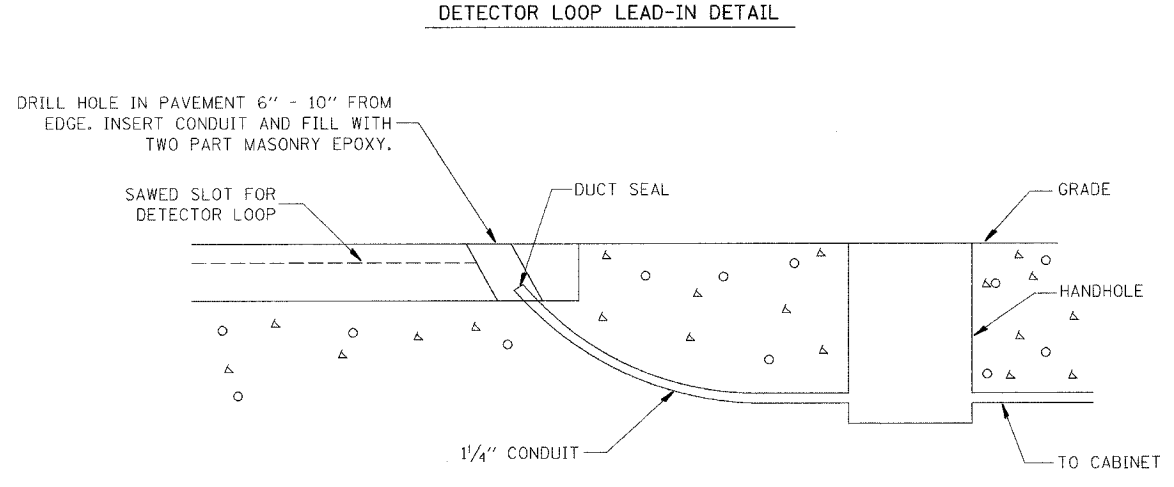
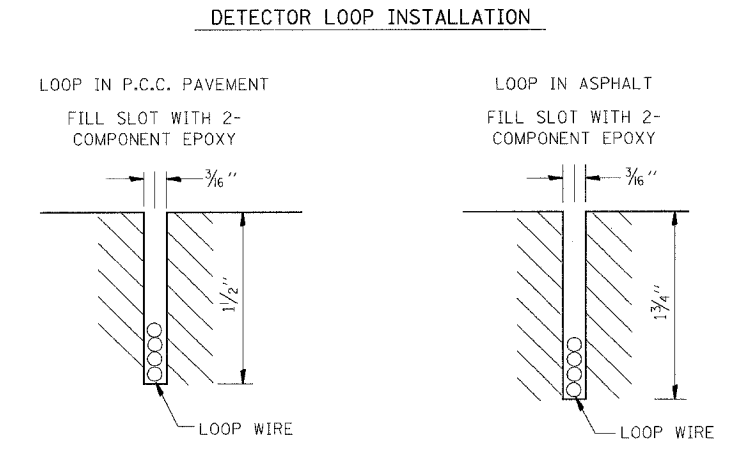


W.B.

BIT. SURF. W/P.C.C.  
BASE FULL REIN.

INTERSTATE 80, 3 MILES  
EAST OF FAS 268 (MARSEILLES)  
INTERCHANGE, LASALLE COUNTY

E.B.



847-2

ILLINOIS DEPARTMENT OF TRANSPORTATION

**DETAILS**

FAU 6108 (IL. RTE. 351)  
SECTION (70XIN & TS-1  
LASALLE COUNTY

REVISIONS	NAME	DATE

SCALE: VERT. \_\_\_\_\_  
HORIZ. \_\_\_\_\_

DATE: 06/06/03

DRAWN BY: MABUS  
DESIGNED BY: BOTT  
CHECKED BY: COLBROOK

GREENE & BRADFORD, INC.  
OF SPRINGFIELD  
CONSULTING ENGINEERS  
INCORPORATED IN ILLINOIS  
REGISTERED PROFESSIONAL ENGINEERS  
NO. 008-011-1111  
1000 W. 4TH ST. SPRINGFIELD, ILL. 62702  
(217) 784-1111 FAX (217) 784-1111

COMPUTER FILE NO.  
STANDARDS-17  
PROJECT: 01194.B.N  
03/03/04-RPB

I:\projects\847\847.dwg (11/18/03 11:40:57 AM) User: greg