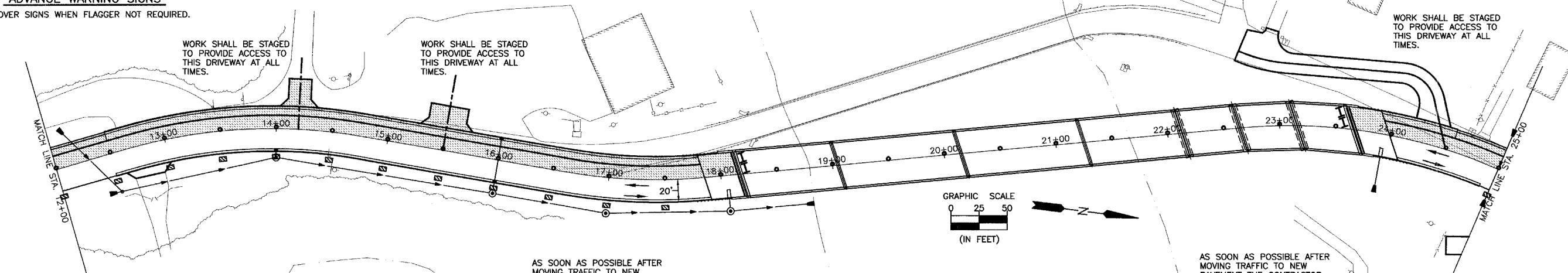


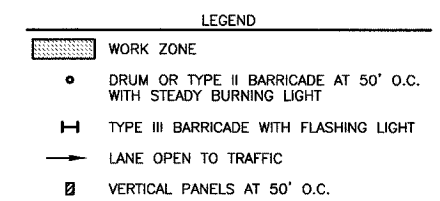
ADVANCE WARNING SIGNS
 * COVER SIGNS WHEN FLAGGER NOT REQUIRED.



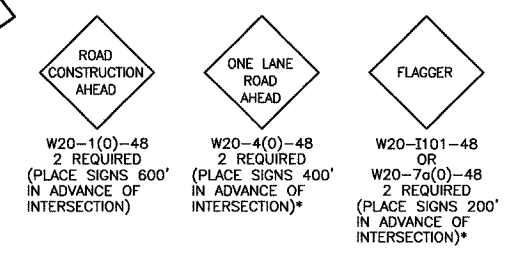
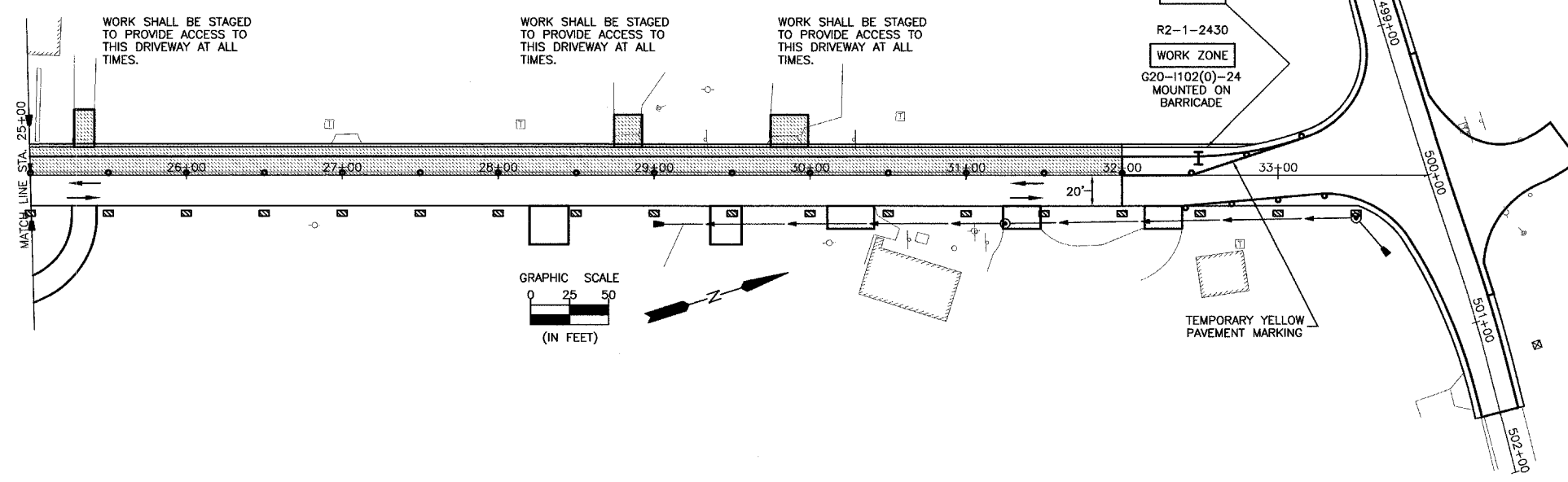
AS SOON AS POSSIBLE AFTER MOVING TRAFFIC TO NEW PAVEMENT THE CONTRACTOR SHALL CONSTRUCT EMBANKMENT AND AGGREGATE SUB-BASE FROM STA. 17+00 TO BACK OF ABUTMENT.

AS SOON AS POSSIBLE AFTER MOVING TRAFFIC TO NEW PAVEMENT THE CONTRACTOR SHALL CONSTRUCT EMBANKMENT FOR THE FRONTAGE ROAD AND FROM BACK OF ABUTMENT TO STA. 25+25.

- NOTES:**
1. TRAFFIC CONTROL AS SHOWN IS FOR CONSTRUCTION OF SOUTHBOUND PAVEMENT AND SHOULDERS. TRAFFIC WILL USE NEW NORTHBOUND PAVEMENT AND SHOULDERS. SEE SHEET 24.
 2. TRAFFIC CONTROL AS SHOWN SHALL BE IN PLACE DURING PERIODS THAT WORKERS ARE NOT PRESENT. DURING PERIODS WHEN WORKERS ARE PRESENT TRAFFIC CONTROL SHALL BE IN ACCORDANCE WITH STANDARD 701501.



STAGE III - TRAFFIC CONTROL
 FAS 259 C.H. 3
 OVER FOX RIVER
 SECTION 98-00545-00-BR
 LASALLE COUNTY



ADVANCE WARNING SIGNS
 * COVER SIGNS WHEN FLAGGER NOT REQUIRED.

| | | | | | |
|-------------------|-------------|-----------|-----|-----------------------|----------|
| DRAWN BY: JKC/LAG | CAD: STG3 | REVISIONS | | SCALE: AS NOTED | SHEET 23 |
| | | DATE | BY | | |
| CHECKED BY: JKC | DATE: 03/03 | 3/08/04 | NET | FILE NO.: 11174.01Y-1 | OF 79 |
| | | 6/29/04 | NET | | |