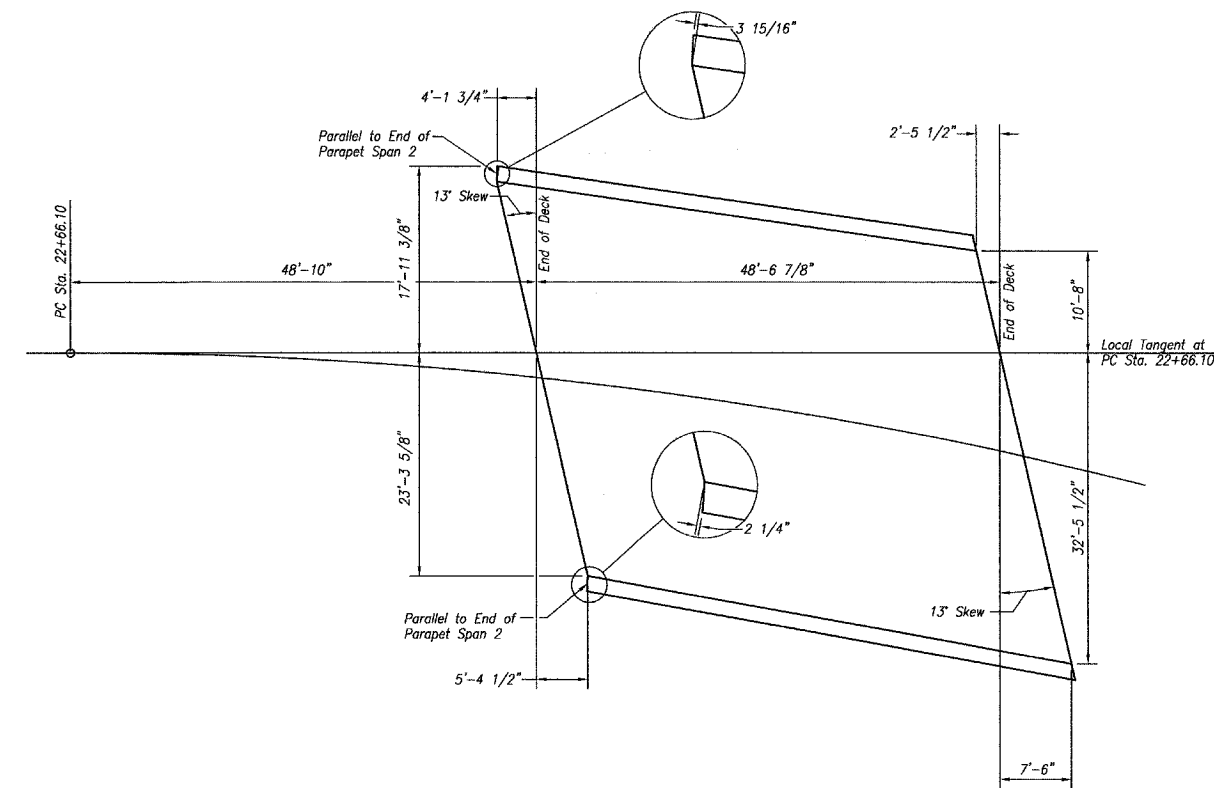


\* Order  $a_9(E)$  &  $a_{10}(E)$  bars full length. Cut to fit skew and use remainder of bars in opposite end.

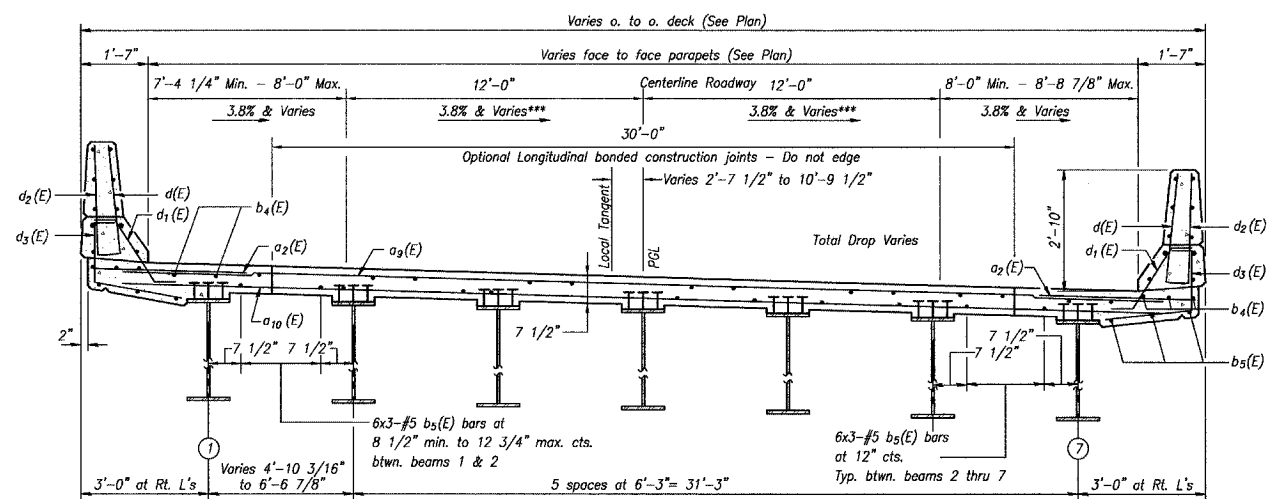
\*\* Field cut  $a_9(E)$  &  $a_{10}(E)$  bars to fit bridge deck flare.

Min. Lap #5 bars 1'-8"

PLAN



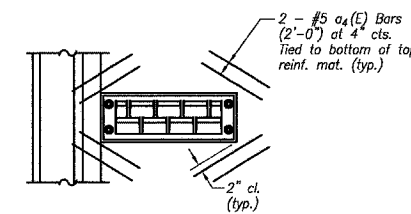
DECK LAYOUT DETAIL  
UNIT #2 - SPAN 3



CROSS SECTION  
(Looking North)

\*\*\* CROSS SLOPE VARIES DUE TO SUPERELEVATION TRANSITION. SEE SHEET 1 OF 38.

NOTE: Centerline Roadway and PGL will not always be on centerline beam 4.



REINFORCEMENT DETAIL AT DRAINAGE SCUPPERS

Notes:  
See Sheet #11 of 38 for Superstructure Details.  
Reinforcement bars designated (E) shall be epoxy coated.  
Bars indicated thus 20 x 3-#5 etc. indicates 20 lines of bars with 3 lengths per line.  
See Sheet #12 of 38 for parapet reinforcement.  
For Bent Bar Details and Bill of Materials See Sheet #13 of 38.

SUPERSTRUCTURE DETAILS  
UNIT #2-SPAN 3  
FAS 259 C.H. 3  
OVER FOX RIVER  
LA SALLE COUNTY  
STA. 20+15.00  
STRUCTURE NO. 050-3562

DRAWN BY: LAG	CAD: SUP4.DWG	REVISIONS		SCALE: AS NOTED	SHEET 35
		DATE	BY		
CHECKED BY: JKC	DATE: 02/03	3/08/04	NET	FILE NO.: 11174.01Y-1	OF 79
		7/01/04	NET		