

CENTERLINE CURVE DATA

$\Delta = 30^{\circ}06'23''$
 $R = 467.72'$
 $T = 125.79$
 $L = 245.77$
 P.C. STA. 22+66.10
 P.I. STA. 23+91.89
 P.T. STA. 25+11.87
 SE = 3.8%
 SE TRANSITION
 STA. 21+66.10 TO STA. 23+16.10
 STA. 24+61.87 TO STA. 26+11.87

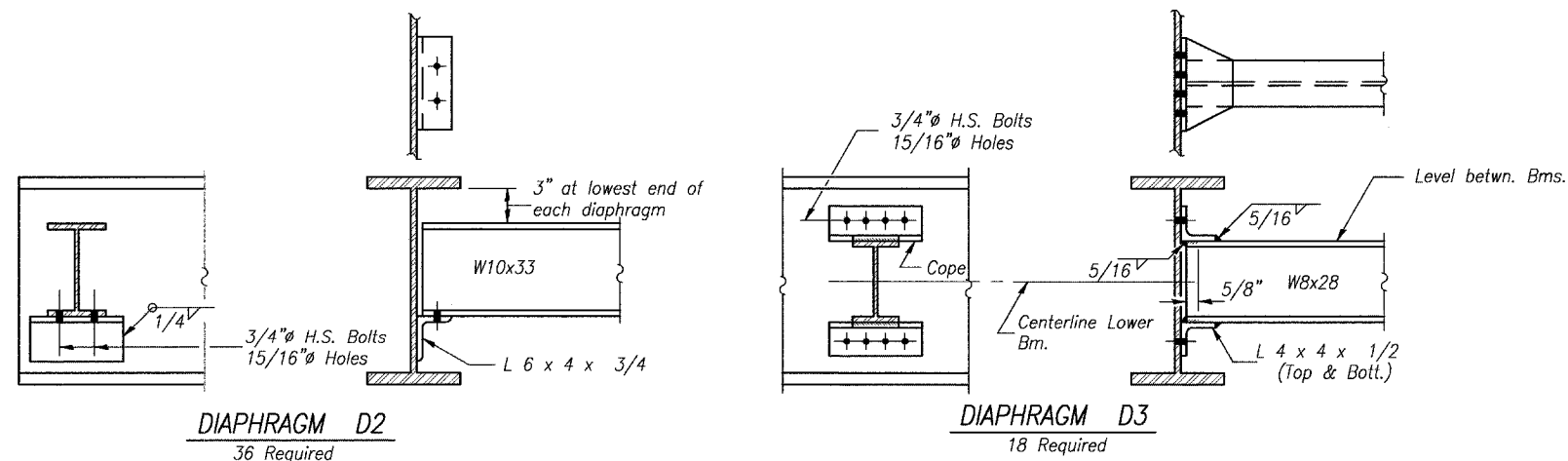
*ALONG CENTERLINE HIGHWAY

50'-0" Along Centerline Beam 1 Span 1
 49'-6" Along Centerline Beam 1 Span 2
 49'-1 1/2" Along Centerline Beam 1 Span 3
 50'-0" Along Centerline Beams 2 thru 7 Span 1
 49'-10" Along Centerline Beams 2 thru 7 Span 2
 49'-10" Along Centerline Beams 2 thru 7 Span 3

LOCATION	A**	B**	C**	D**
@ Span 1 Pier 4	6	6'-2 5/16"	37'-2"	--
@ Span 1 Pier 5	6	6'-2 5/16"	37'-2"	--
@ Span 2 Pier 5	5	6'-3"	31'-3"	5'-3 3/8"
@ Span 2 Pier 6	5	6'-3"	31'-3"	6'-5 7/16"
@ Span 3 Pier 6	5	6'-3"	31'-3"	4'-10 3/16"
@ Span 3 N Abut	5	6'-3"	31'-3"	6'-6 7/8"

** At Rt L's to beam 7

PLAN



Note: Two hardened washers shall be required over all oversize holes for diaphragms.

TOP OF BEAM ELEVATIONS

CENTERLINE BEARING LOCATION	BM 1	BM 2	BM 3	BM 4	BM 5	BM 6	BM 7
@ Span 1 Pier 4	551.51	551.51	551.50	551.49	551.34	551.18	551.03
@ Span 1 Pier 5	550.77	550.64	550.50	550.36	550.19	550.03	549.86
@ Span 2 Pier 5	550.74	550.63	550.48	550.33	550.17	550.00	549.83
@ Span 2 Pier 6	549.63	549.34	549.05	548.75	548.44	548.13	547.81
@ Span 3 Pier 6	549.59	549.36	549.05	548.74	548.41	548.08	547.75
@ Span 3 N Abut	547.87	547.52	547.18	546.84	546.49	546.15	545.80

FRAMING PLAN - UNIT #2
 FAS 259 C.H. 3
 OVER FOX RIVER
 LA SALLE COUNTY
 STA. 20+15.00
 STRUCTURE NO. 050-3562

DRAWN BY: LAG	CAD: BEAM2	REVISIONS		SCALE: AS NOTED	SHEET 41
		DATE	BY		
CHECKED BY: JKC	DATE: 02/03	3/08/04	NET	FILE NO.: 11174.01Y-1	OF 79