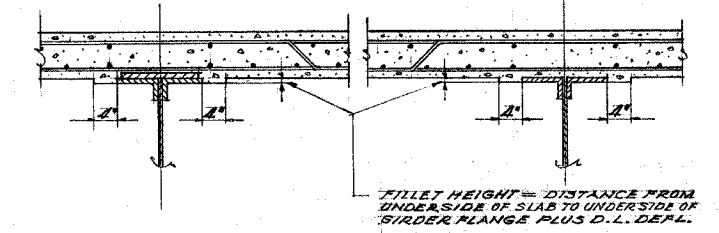
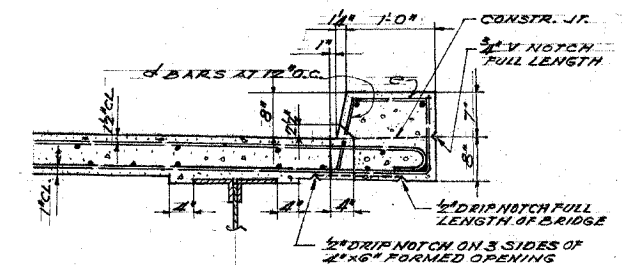


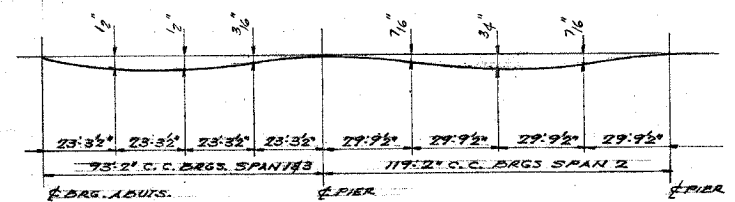
PLAN SHOWING SLAB REINFORCEMENT



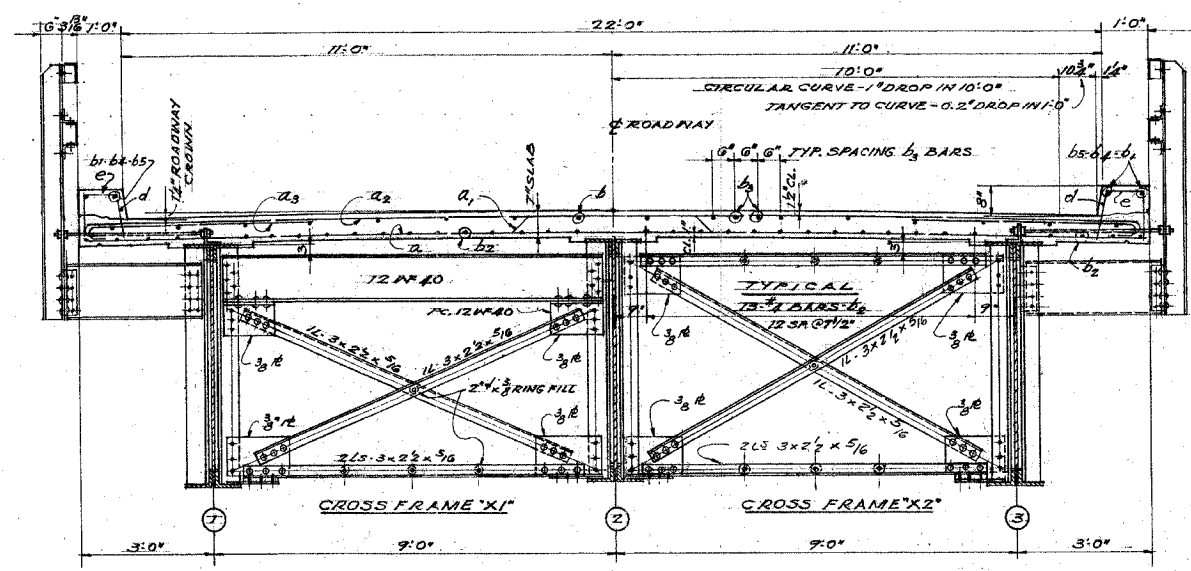
TOP FLANGE ENCASEMENT



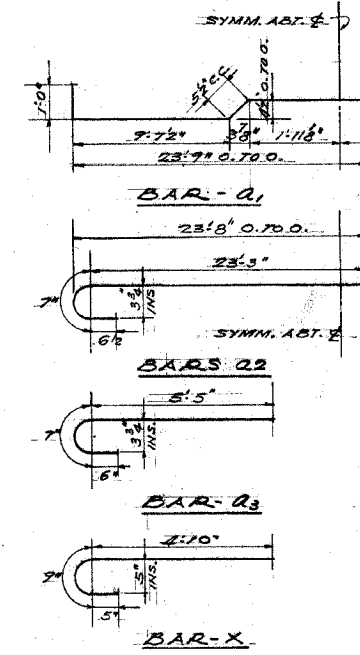
CURB & FORMED OPENING



D.L. DEFLECTION DIAGRAM



HALF CROSS SECTION AT ABUTMENTS HALF CROSS SECTION INTERIOR



BILL OF MATERIAL			
BAR NO.	SIZE	LENGTH	SHAPE
a	307 #5	23'9"	[Shape]
a <sub>1</sub>	306 #5	26'0"	[Shape]
a <sub>2</sub>	307 #5	25'6"	[Shape]
a <sub>3</sub>	612 #5	6'6"	[Shape]
b	100 #5	32'3"	[Shape]
b <sub>1</sub>	24 #4	27'3"	[Shape]
b <sub>2</sub>	340 #4	32'3"	[Shape]
b <sub>3</sub>	64 #6	35'0"	[Shape]
b <sub>4</sub>	12 #4	30'0"	[Shape]
b <sub>5</sub>	16 #4	15'9"	[Shape]
d	616 #4	1'0"	[Shape]
e	166 #4	0'9"	[Shape]
x	53 #5	6'0"	[Shape]
CLASS X CONCRETE		CU. YDS. 178.8	
REINFORCEMENT BARS		LBS. 45960	
STRUCTURAL STEEL		LBS. 32865	

APPROVED \_\_\_\_\_ COUNTY SUPERINTENDENT OF HIGHWAYS  
 EXAMINED \_\_\_\_\_ BRIDGE ENGINEER  
 PASSED \_\_\_\_\_ ENGINEER OF DESIGN  
 APPROVED \_\_\_\_\_ CHIEF HIGHWAY ENGINEER

ALFRED BENESCH & ASSOCIATES CONSULTING ENGINEERS  
 30 EAST ADAMS STREET CHICAGO - ILLINOIS

SLAB REINFORCEMENT & DETAILS  
 NORTH SHERIDAN BRIDGE  
 OVER FOX RIVER  
 S.A. ROUTE 2A SECTION 2A 708-M.F.T.  
 LASALLE COUNTY  
 STATION 38 + 79.35