

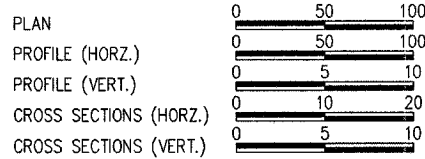
ROUTE NO.	SECTION	COUNTY	TOTAL SHEETS	SHEET NO.
FAS 383	00-00053-04-FP	PEORIA	21 1/8	1
FED. ROAD DIST. NO. 7		ILLINOIS PROJECT RS-0143(36)	CONTRACT NO. 89360	

STATE OF ILLINOIS
DEPARTMENT OF TRANSPORTATION
DIVISION OF HIGHWAYS
**PLANS FOR PROPOSED
RELOCATION COUNTY HIGHWAY R40
SECTION 00-00053-04-FP
PROJECT NO. RS-0143 (36)
PEORIA COUNTY
PHASE II
COUNTY HIGHWAY R40 UNDER BNSF R.R.
JOB NO. C-94-101-04**

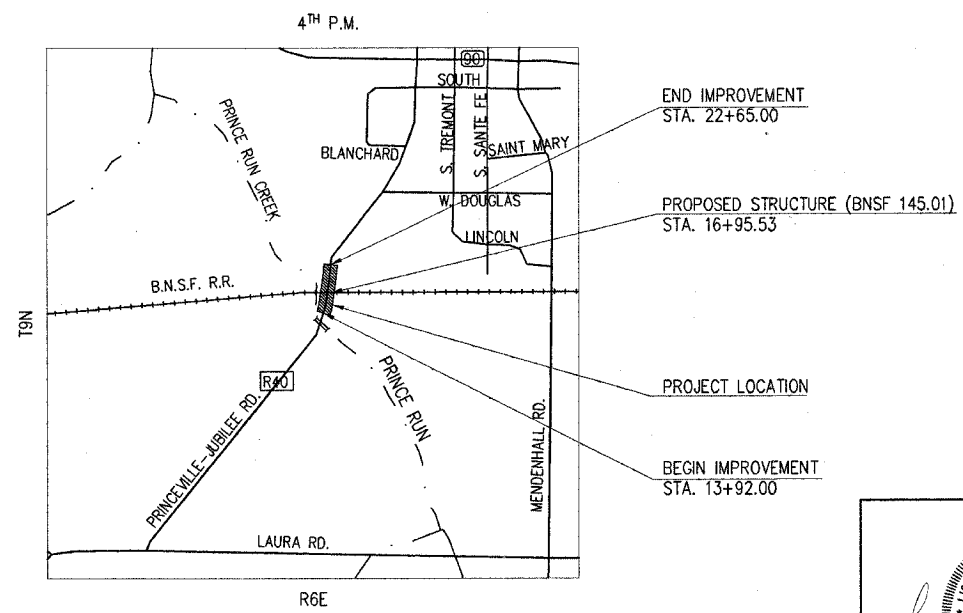


- INDEX OF SHEETS**
1. COVER SHEET
 2. GENERAL NOTES & SUMMARY OF QUANTITIES
 3. SCHEDULE OF QUANTITIES
 4. TYPICAL SECTIONS
 5. HORIZONTAL CONTROL
 6. REMOVAL PLAN
 7. PLAN & PROFILE SHEET
 8. UTILITY RELOCATION PLAN
 9. UTILITY DETAILS
 10. EROSION CONTROL PLAN
 11. DETAILS
 - 12.-14. STRUCTURAL SHEETS
 - 15.-21. CROSS SECTIONS
 - 1-3 BNSF BRIDGE PLANS (FOR INFORMATION ONLY)

- LIST OF STANDARDS**
- 280001-01 TEMPORARY EROSION CONTROL SYSTEM
 - 482001 BITUMINOUS SHOULDER ADJACENT TO FLEXIBLE PAVEMENT
 - 542401 METAL END SECTION FOR PIPE CULVERTS
 - 602401 MANHOLE, TYPE A
 - 604001-02 FRAME AND LIDS, TYPE 1
 - 630001-05 STEEL PLATE BEAM GUARDRAIL
 - 630301-03 SHOULDER WIDENING FOR TYPE 1, (SPECIAL) GUARDRAIL TERMINALS
 - 635001 DELINEATORS
 - 635006-02 REFLECTOR AND TERMINAL MARKER PLACEMENT
 - 635011-01 REFLECTOR MARKER AND MOUNTING DETAILS
 - 664001-01 CHAIN LINK FENCE
 - 701001-01 OFF-ROAD OPERATION 2L, 2W, MORE THAN 4.5 m (15') AWAY
 - 701006-02 OFF-ROAD OPERATION 2L, 2W, 4.5 m (15') TO 600 mm (24") FROM PAVEMENT EDGE
 - 701011-01 OFF-ROAD MOVING OPERATIONS, 2L, 2W, DAY ONLY
 - 701301-02 LANE CLOSURE, 2L, 2W, SHORT TIME OPERATIONS
 - 702001-05 TRAFFIC CONTROL DEVICES
 - 780001-01 TYPICAL PAVEMENT MARKINGS
 - BLR-17-3 TRAFFIC CONTROL DEVICES - DAY LABOR CONSTRUCTION
 - BLR-21-6 TYPICAL APPLICATION OF TRAFFIC CONTROL DEVICES FOR CONSTRUCTION ON RURAL LOCAL HIGHWAYS
 - BLR-22-4 TYPICAL APPLICATION OF TRAFFIC CONTROL DEVICES FOR CONSTRUCTION ON RURAL LOCAL HIGHWAYS (TWO LANE TWO WAY RURAL TRAFFIC) (ROAD CLOSED TO THRU TRAFFIC)



**QC/QA BITUMINOUS
SUPERPAVE PROJECT**



LATITUDE: 40°55'19.29"
 LONGITUDE: 89°45'47.30"
 SCALE OF LAYOUT: 0, 0.25mi, 0.5mi

DATE SIGNED: 12/17/2004
 LISC. EXP. DATE: 11/30/2005

APPROVED December 16 2004
Thomas J McFarland
 PEORIA COUNTY ENGINEER

PASSED December 27 2004
John Laballe
 DISTRICT ENGINEER OF LOCAL ROADS & STREETS

RELEASING FOR BID BASED ON LIMITED REVIEW Dec 28 2004
John Laballe
 DISTRICT ENGINEER
 STATE OF ILLINOIS
 DEPARTMENT OF TRANSPORTATION

Hanson Professional Services Inc.
 2900 W. Willow Knolls Road
 Peoria, Illinois 61614-1129

Illinois Licensed Professional Service Corporation #184-001084

TOTAL AND NET LENGTH OF IMPROVEMENT: 873 FT. = 0.17 MILES

LAYOUT CAL 07/07/04
 DESIGN RIA 11/08/04
 PREPARED CAL 12/15/04
 1:06...085 (08/08/08) PHASE 2 SHEETS (C-94-101-04) DEC 16, 2004 2:45PM CAL

ADT (2005): = 1610, SU = 4%, MU = 2.5%
 HIGHWAY CLASS: MAJOR COLLECTOR
 DESIGN SPEED: 50 M.P.H.
 DESIGN POLICY: 3R
 VARIANCES GRANTED: SAG VERTICAL CURVE WITH 45 MPH DESIGN SPEED
 COMMITMENTS: NONE