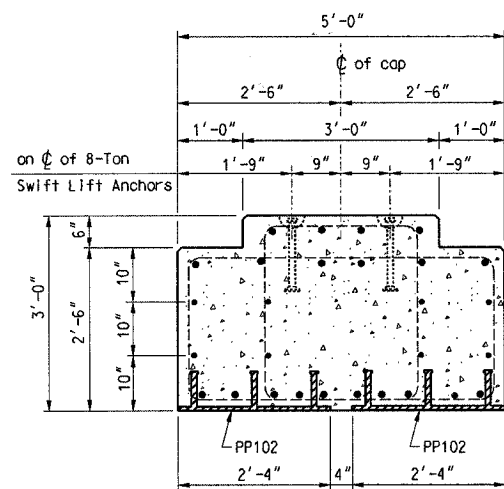


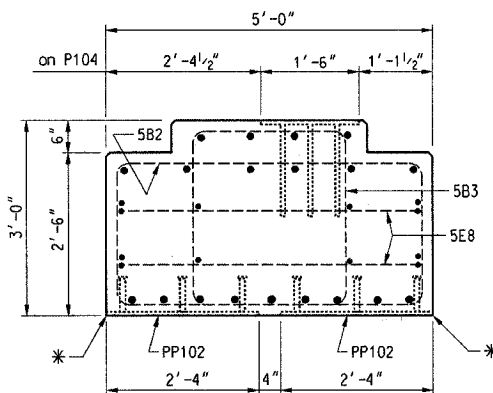
LIFTING DETAIL

8-Ton Swift Lift Recess Plugs, Anchors and Lifting Eyes are available from Dayton Superior Corp., 721 Richard St., Miamisburg, Ohio 45342, Telephone (937) 866-0711. The materials for this lifting system are not included in the Bill of Material but are to be ordered as required.



SECTION E-E

See SPC145.01-2 for horizontal bars

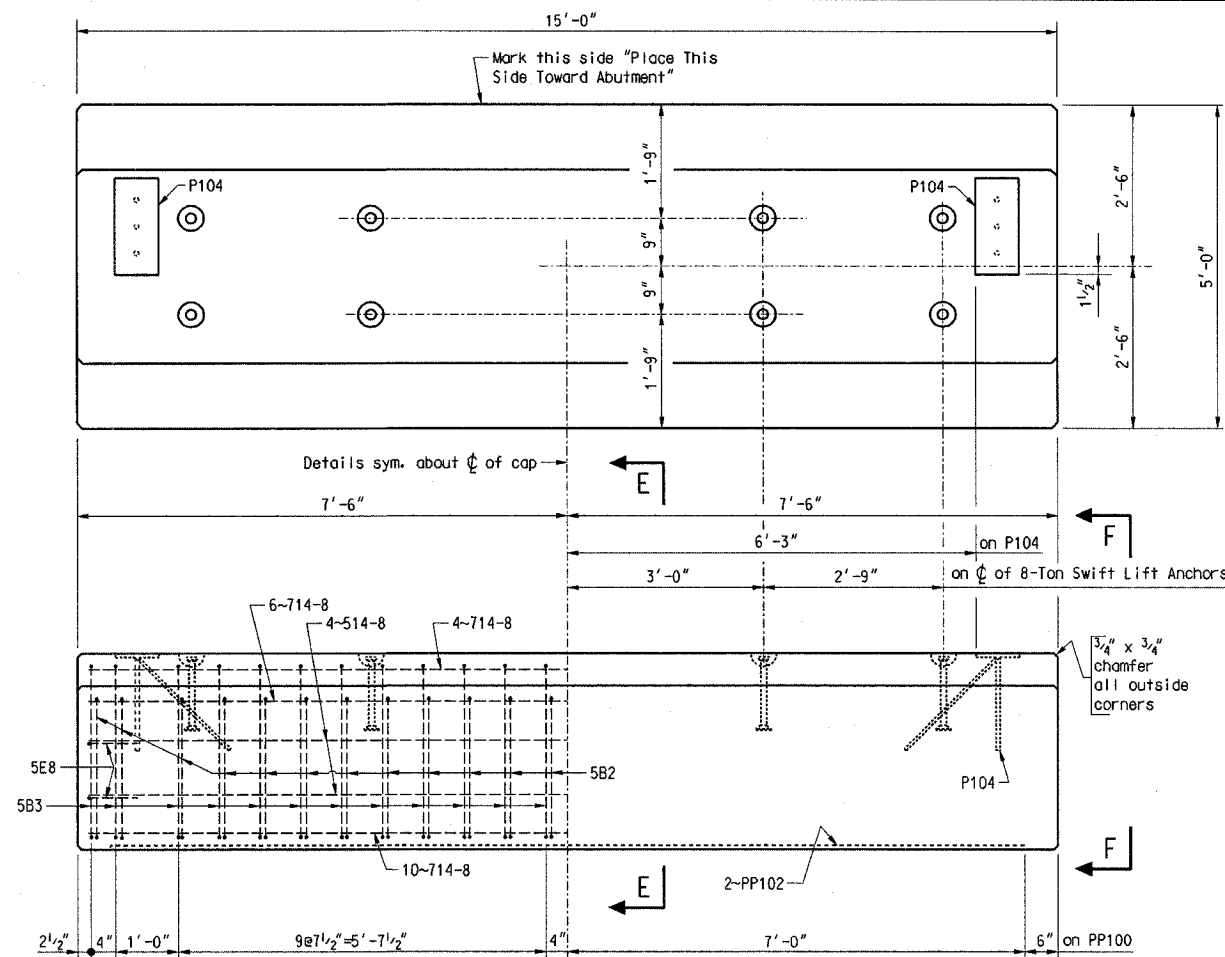


VIEW F-F

Swift-Lifts not shown See SPC145.01-2 for horizontal bars

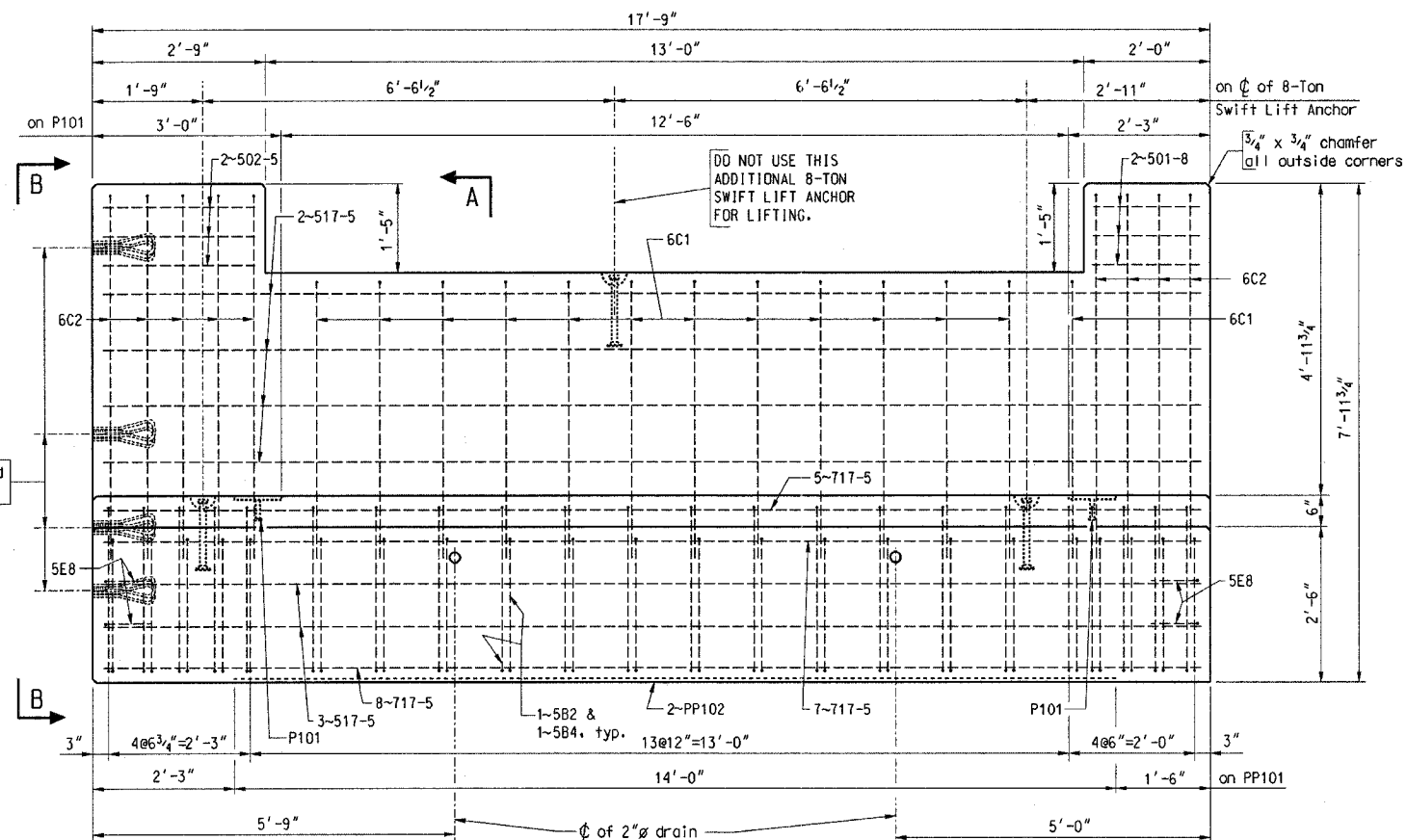
* No chamfer along this side on account of placement of PP102.

NOTE:
Place top bars carefully to avoid interference with drilling of anchor bolt holes in the field.



PRECAST CAP SPC145.01-2

Wt. = 33,200 Lbs., Vol. = 7.78 cu. yds., Reinf. Steel = 1,239 Lbs.



PRECAST CAP SPC145.01-1^L

Wt. = 47,500 Lbs., Vol. = 11.25 cu. yds., Reinf. Steel = 1,941 Lbs.

Precast Cap SPC145.01-1^R is opposite hand of SPC145.01-1^L.

NOTE:
See Sheet 4 of 8 for Section A-A and View B-B.

NOTES:

GENERAL: ALL MATERIAL AND WORKMANSHIP SHALL BE AS PER THE CURRENT BNSF STANDARD SPECIFICATIONS.

COIL LOOP INSERTS ARE TO BE DOUBLE FLARED TYPE B17 1 1/4" DIA. x 12" AS MANUFACTURED BY DAYTON-SUPERIOR AND HAVE A SAFE WORKING LOAD OF 13,500 LBS. WITH A 4 TO 1 SAFETY FACTOR. THE INSERTS ARE TO BE COMPLETELY RECESSED WITH 1 1/4" x 13" SPIRAL BOLTS ATTACHED TO CAP FOR SHIPMENT.

CONCRETE: THE ULTIMATE COMPRESSIVE STRENGTH OF CONCRETE SHALL BE NOT LESS THAN 4000 p.s.i. IN 28 DAYS. CONCRETE MEMBERS SHALL NOT BE REMOVED FROM THE CASTING BED BEFORE THE CONCRETE REACHES A STRENGTH OF 2500 p.s.i.

ALL EXPOSED EDGES OF CONCRETE MEMBERS SHALL BE CHAMFERED 3/4 INCH.

REINFORCEMENT: MILD STEEL REINFORCEMENT SHALL MEET THE REQUIREMENTS OF THE CURRENT A.S.T.M. DESIGNATION: A615 OR A706, GRADE 60.

FABRICATION OF REINFORCEMENT SHALL BE IN ACCORDANCE WITH CHAPTER 7 OF THE CURRENT C.R.S.I. MANUAL OF STANDARD PRACTICE.

STEEL REINFORCEMENT MAY BE MOVED SLIGHTLY SO AS TO MISS PP100.

MINIMUM CONCRETE COVER ON REINFORCEMENT SHALL BE TWO (2) INCHES.

| STEEL REQUIRED PER PRECAST MEMBER | | |
|-----------------------------------|-------------|-------------------------------------------------------------------------------------------------------------------|
| PRECAST MEMBER | DESCRIPTION | |
| SPC145.01-1 ^R | SPC145.01-2 | |
| REINFORCING STEEL | | |
| 22 | 24 | 5B2 (See Detail, Sht. 4 of 8) |
| - | 24 | 5B3 (See Detail, Sht. 4 of 8) |
| 22 | - | 5B4 (See Detail, Sht. 4 of 8) |
| 13 | - | 6C1 (See Detail, Sht. 4 of 8) |
| 9 | - | 6C2 (See Detail, Sht. 4 of 8) |
| 4 | 4 | 5E8 (See Detail, Sht. 4 of 8) |
| 6 | - | 501-8 (STRAIGHT) |
| 6 | - | 502-5 (STRAIGHT) |
| - | 8 | 514-8 (STRAIGHT) |
| 14 | - | 517-5 (STRAIGHT) |
| - | 20 | 714-8 (STRAIGHT) |
| 20 | - | 717-5 (STRAIGHT) |
| STRUCTURAL STEEL | | |
| 5 | - | DAYTON SUPERIOR B-17 DOUBLE FLARED COIL LOOP INSERT 1 1/4" x 12" LONG, 13,500 LBS. SWL. (SAFE WORKING LOAD) PLAIN |
| 2 | - | PLATE P101 (SEE DETAIL, PLAN 0000-17902-300) |
| - | 2 | PLATE P104 (SEE DETAIL, PLAN 0000-17902-300) |
| 2 | 2 | PILE PLATE PP102 (SEE DTL., PLAN 0000-17902-300) |

DES: KHJ DRW: KHJ CHK: MGG
 DATE: Nov., 2004 AUTH: 7-7000-05 LINE SEG: 7000
 BRIDGE ENGINEERING KANSAS CITY, KS
 APPROVED: *K.H. Jennison*
 ASSISTANT DIRECTOR STRUCTURES DESIGN

CHICAGO, IL TO FT. MADISON, IA
 BRIDGE 145.01
 OVER CO. HWY. R40 NEAR PRINCEVILLE, IL
 PRECAST CONCRETE DETAILS
 (1 of 2)



PLAN NO.: 7000-145.01-03 SHEET: 3 of 8