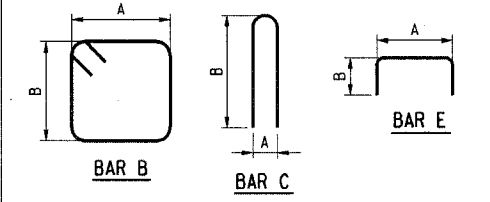


STEEL REQUIRED PER PRECAST MEMBER	
SPW145.01	DESCRIPTION
REINFORCING STEEL	
8	4C11 (SEE DETAIL)
1	4C12 (SEE DETAIL)
1	4C13 (SEE DETAIL)
1	4C14 (SEE DETAIL)
1	4C15 (SEE DETAIL)
1	4C16 (SEE DETAIL)
1	4C17 (SEE DETAIL)
1	4C18 (SEE DETAIL)
6	405-6 (STRAIGHT)
2	408 (STRAIGHT)
3	406-9 (STRAIGHT)
2	409-3 (STRAIGHT)
2	410-6 (STRAIGHT)
10	411-2 (STRAIGHT)

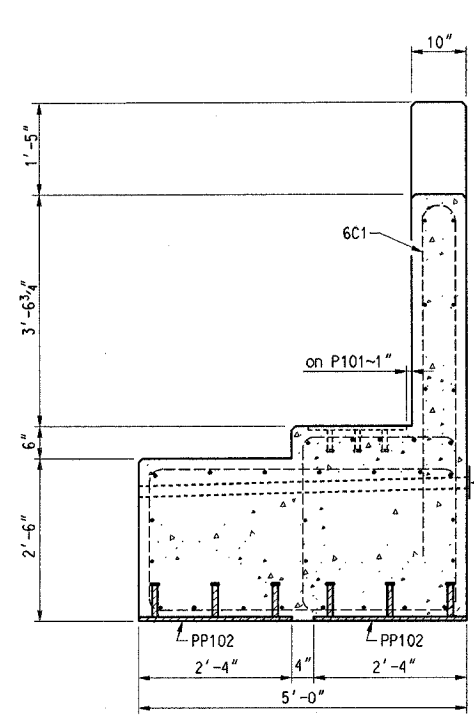
PRECAST WING WALL SPW145.01

Wt. = 8,400 Lbs., Vol. = 2.07 cu. yds., Reinf. Steel = 263 lbs.

LIST OF REINFORCING BARS					
MARK	SIZE	TYPE	A	B	LENGTH
5B2	5	B	4'-8"	2'-2"	14'-7"
5B3	5	B	2'-4"	2'-8"	10'-11"
5B4	5	B	2'-4"	2'-8"	10'-11"
4C11	4	C	5"	7'-7 1/2"	15'-6"
4C12	4	C	5"	6'-0 1/2"	11'-8"
4C13	4	C	5"	5'-7 1/2"	10'-10"
4C14	4	C	5"	5'-2 1/2"	10'-0"
4C15	4	C	5"	4'-9 1/2"	9'-2"
4C16	4	C	5"	4'-4 1/2"	8'-4"
4C17	4	C	5"	3'-7 1/2"	7'-6"
4C18	4	C	5"	3'-3 1/2"	6'-10"
6C1	6	C	6"	4'-5"	9'-1"
6C2	6	C	6"	5'-10"	11'-11"
5E8	5	E	4'-6 3/4"	10"	6'-3"
405-6	4	STR.	-	-	5'-6"
406-9	4	STR.	-	-	6'-9"
408	4	STR.	-	-	8'-0"
409-3	4	STR.	-	-	9'-3"
410-6	4	STR.	-	-	10'-6"
411-2	4	STR.	-	-	11'-2"
501-8	5	STR.	-	-	1'-8"
502-5	5	STR.	-	-	2'-5"
514-8	5	STR.	-	-	14'-8"
517-5	5	STR.	-	-	17'-5"
614-8	6	STR.	-	-	14'-8"
714-8	7	STR.	-	-	14'-8"
717-5	7	STR.	-	-	17'-5"



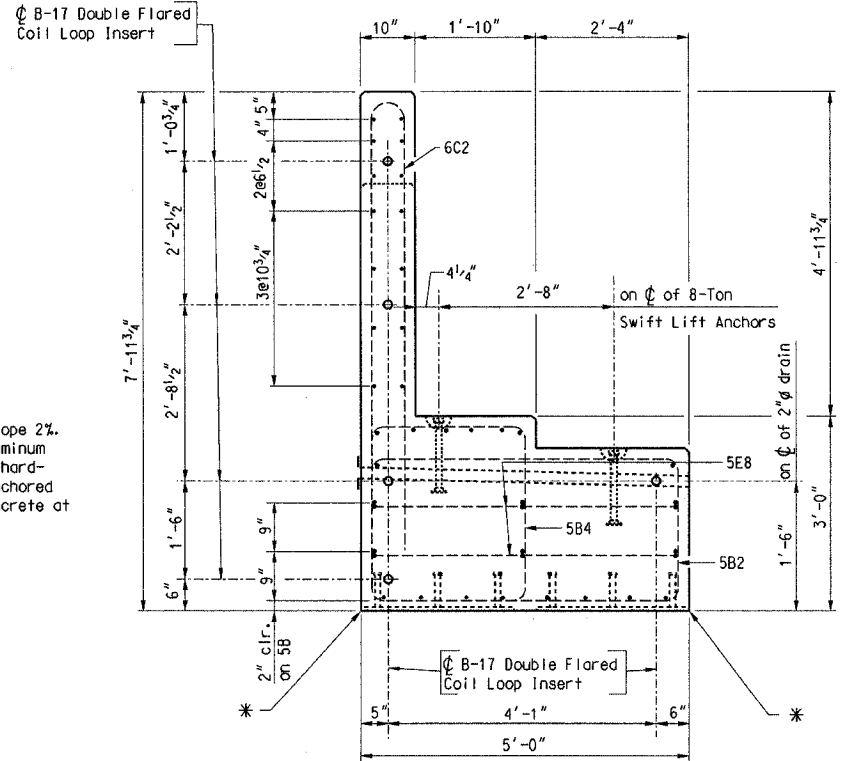
REINFORCING STEEL DETAILS
All dimensions shown are out to out of bars.



SECTION A-A

For designation of horizontal bars, see Elevation of SPC145.01-1. Lift anchors not shown.

2" dia drain, slope 2%. 4" square aluminum wire #4 mesh hardware cloth anchored firmly to concrete at each drain.



VIEW B-B

For designation of horizontal bars, see Elevation of SPC145.01-1

* No chamfer along this side on account of placement of PP102

See Sht. 3 of 8 for location of Section A-A & B-B

DES: KHJ DRW: KHJ CHK: MGG
 DATE: Nov., 2004 AUTH: 7-7000-05 LINE SEG: 7000
 BRIDGE ENGINEERING KANSAS CITY, KS
 APPROVED: *K.H. Jernison*
 ASSISTANT DIRECTOR STRUCTURES DESIGN

CHICAGO, IL TO FT. MADISON, IA
 BRIDGE 145.01
 OVER CO. HWY. R40 NEAR PRINCEVILLE, IL
 PRECAST CONCRETE DETAILS
 (2 of 2)
 PLAN NO.: 7000-145.01-04 SHEET: 4 of 8

