

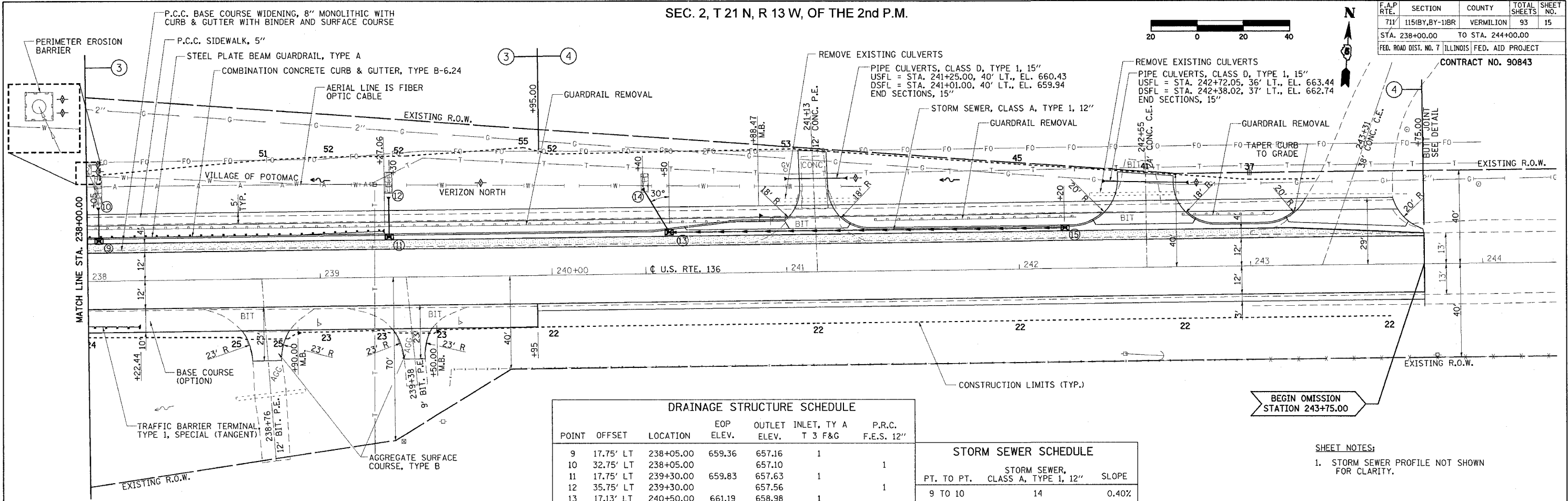
SEC. 2, T 21 N, R 13 W, OF THE 2nd P.M.

| F.A.P. RTE. | SECTION | COUNTY | TOTAL SHEETS | SHEET NO. |
|---|-----------------|-------------------|--------------|-----------|
| 711 | 115(BY, BY-1)BR | VERMILION | 93 | 15 |
| STA. 238+00.00 | | TO STA. 244+00.00 | | |
| FED. ROAD DIST. NO. 7 ILLINOIS FED. AID PROJECT | | | | |

CONTRACT NO. 90843

| | | |
|------|----------|------|
| PLAN | DESIGNED | DATE |
| | CHECKED | |
| | NOTED | |
| | BY | |

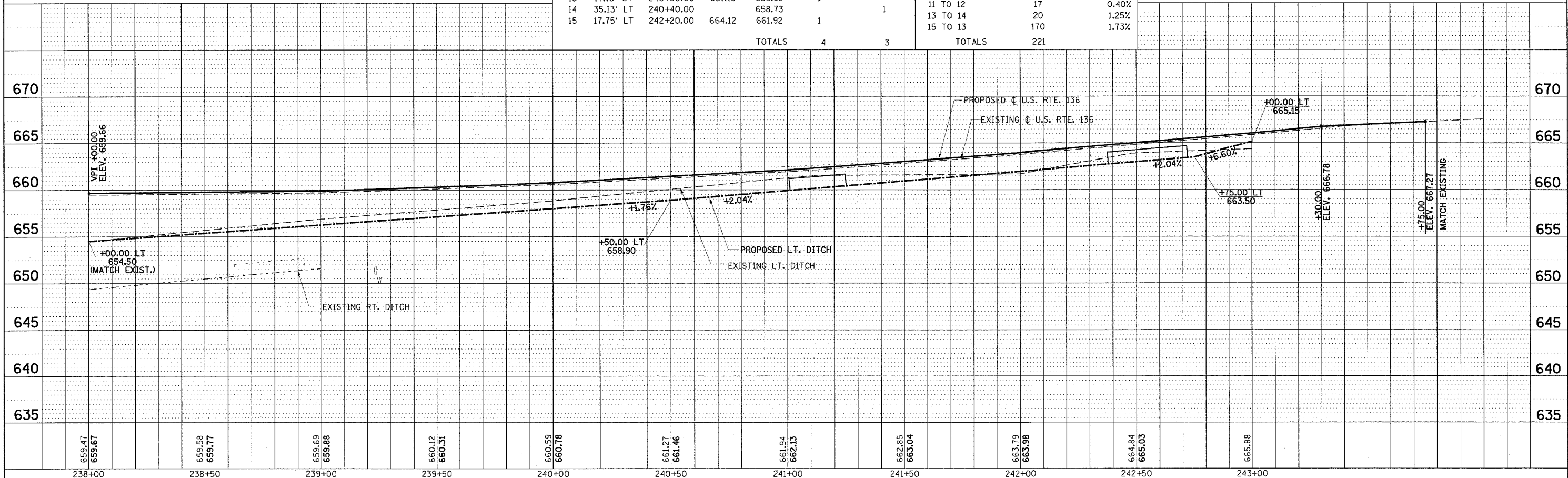
| | | |
|---------|----------|------|
| PROFILE | DESIGNED | DATE |
| | CHECKED | |
| | NOTED | |
| | BY | |



| POINT | OFFSET | LOCATION | EOP ELEV. | OUTLET ELEV. | INLET, TY A T 3 F&G | P.R.C. F.E.S. 12" |
|--------|-----------|-----------|-----------|--------------|---------------------|-------------------|
| 9 | 17.75' LT | 238+05.00 | 659.36 | 657.16 | 1 | |
| 10 | 32.75' LT | 238+05.00 | | 657.10 | | 1 |
| 11 | 17.75' LT | 239+30.00 | 659.83 | 657.63 | 1 | |
| 12 | 35.75' LT | 239+30.00 | | 657.56 | | 1 |
| 13 | 17.13' LT | 240+50.00 | 661.19 | 658.98 | 1 | |
| 14 | 35.13' LT | 240+40.00 | | 658.73 | | 1 |
| 15 | 17.75' LT | 242+20.00 | 664.12 | 661.92 | 1 | |
| TOTALS | | | | | 4 | 3 |

| PT. TO PT. | STORM SEWER, CLASS A, TYPE 1, 12" | SLOPE |
|------------|-----------------------------------|-------|
| 9 TO 10 | 14 | 0.40% |
| 11 TO 12 | 17 | 0.40% |
| 13 TO 14 | 20 | 1.25% |
| 15 TO 13 | 170 | 1.73% |
| TOTALS | | 221 |

SHEET NOTES:
 1. STORM SEWER PROFILE NOT SHOWN FOR CLARITY.



238+00 238+50 239+00 239+50 240+00 240+50 241+00 241+50 242+00 242+50 243+00

BLANK, WESSELINK, COOK & ASSOCIATES ENGINEERS - CONSULTANTS DECATUR, ILLINOIS FAP ROUTE 711 (US ROUTE 136) SECTION 115(BY, BY-1)BR VERMILION COUNTY