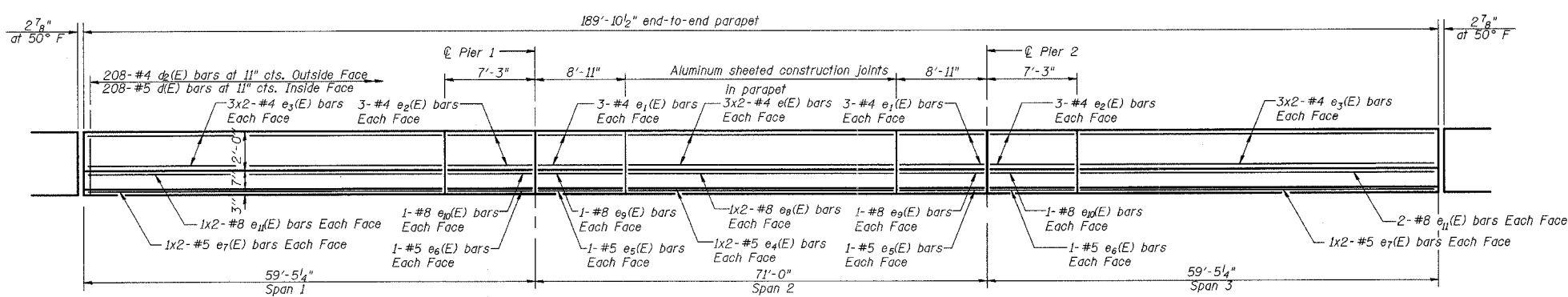


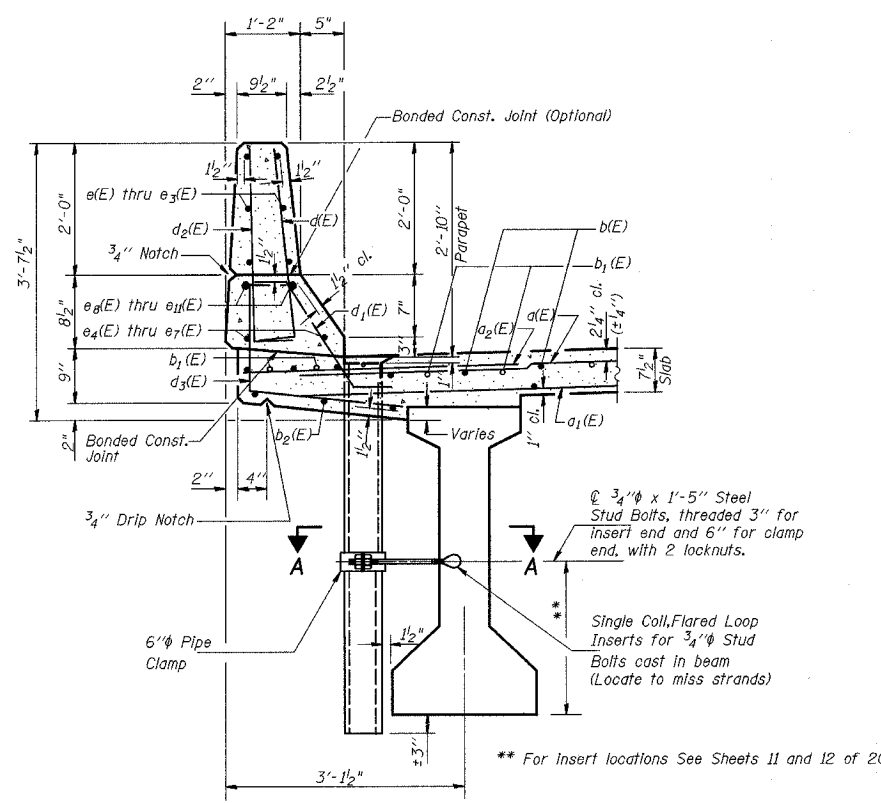
F.A.P. DIST.	SECTION	COUNTY	TOTAL SHEETS	SHEET NO.
711	115(BY)-DBR	VERMILION	93	54
FED. ROAD DIST. NO.	ILLINOIS	FED. AID PROJECT		

SHEET NO. 7
SHEETS 20

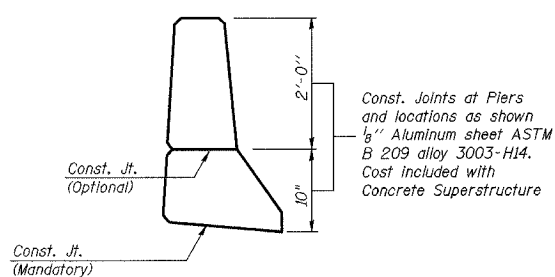
CONTRACT NO. 90843



INSIDE ELEVATION OF PARAPET

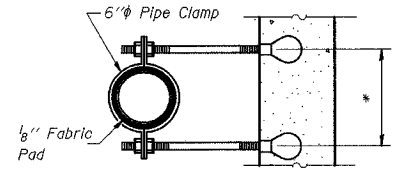


SECTION THRU PARAPET

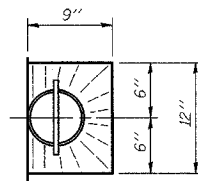


PARAPET JOINT DETAILS

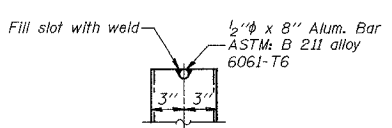
Notes:
Fiberglass pipe shall conform to ASTM D2996, with short-time rupture strength hoop tensile stress of 30,000 p.s.i. minimum. The surface of the Fiberglass pipe shall be free of bond inhibiting agents.
The exterior surfaces of the furnished drains shall be coated by the manufacturer with a pigment that matches the color of the concrete.
The clamping device and inserts shall be galvanized in accordance with AASHTO M 232.



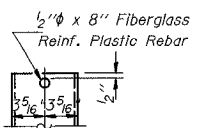
SECTION A-A



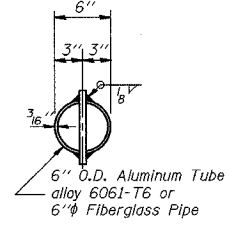
TOP PLAN



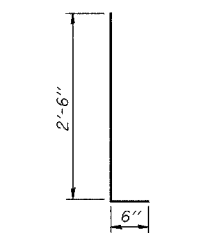
ALUMINUM TUBE



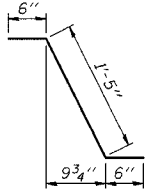
FIBERGLASS PIPE



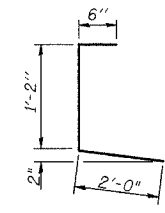
TOP PLAN (Showing Aluminum Tube)



BARS d(E) & d2(E)



BAR d1(E)



BAR d3(E)

SUPERSTRUCTURE
BILL OF MATERIAL

Bar	No.	Size	Length	Shape
a(E)	582	#5	18'-5"	—
a1(E)	438	#5	18'-5"	—
a2(E)	300	#6	4'-6"	—
a3(E)	28	#7	25'-3"	—
a4(E)	40	#6	8'-1"	—
a5(E)	16	#6	3'-10"	—
a6(E)	4	#6	23'-3"	—
b(E)	294	#5	28'-6"	—
b1(E)	76	#6	25'-9"	—
b2(E)	216	#5	33'-0"	—
d(E)	416	#5	3'-0"	—
d1(E)	416	#5	2'-5"	—
d2(E)	416	#4	3'-0"	—
d3(E)	416	#4	3'-8"	—
e(E)	24	#4	27'-3"	—
e1(E)	24	#4	8'-7"	—
e2(E)	24	#4	6'-11"	—
e3(E)	48	#4	26'-9"	—
e4(E)	8	#5	27'-6"	—
e5(E)	8	#5	8'-7"	—
e6(E)	8	#5	6'-11"	—
e7(E)	16	#5	27'-0"	—
e8(E)	8	#8	28'-8"	—
e9(E)	8	#8	8'-7"	—
e10(E)	8	#8	6'-11"	—
e11(E)	16	#8	28'-2"	—
m(E)	32	#4	8'-1"	—
m1(E)	16	#6	6'-3"	—
m2(E)	12	#8	6'-7"	—
m3(E)	16	#4	3'-10"	—
s(E)	60	#4	10'-11"	—
x(E)	120	#6	9'-2"	—
Reinforcement Bars, Epoxy Coated	Pound	54,270		
Concrete Superstructure	Cu Yds	256.0		
Bar Splicers	Each	544		

NOTES:
Bars indicated thus 1x2-#5 etc. indicates 1 line of bars with 2 lengths per line.
Reinforcement bars in diaphragm are billed with superstructure.
Concrete in diaphragm is included with Concrete Superstructure.
For bar splicer details see Sheet 16 of 20.
Pour abutment diaphragms monolithically with slab. Reinforcement bars designated (E) shall be epoxy coated.
For anchor bolt details see Sheet 17 of 20.
Work this sheet with Sheets 6 and 8 of 20.
For details of Bar s(E), m2(E) and x(E) see Sheet 8 of 20.

MIN BAR LAPS

- #4 bars = 1'-8"
- #5 bars = 2'-2"
- #8 bars = 4'-6"

ILLINOIS DEPARTMENT OF TRANSPORTATION
SUPERSTRUCTURE DETAILS
U.S. ROUTE 136 OVER
BEAN CREEK
F.A.P. ROUTE 711
SECTION 115(BY)-DBR
VERMILION COUNTY
STA. 286+77.00
STRUCTURE NUMBER 092-0201

DATE: OCT. 2003

DRAWN BY: MLO/NJV
CHECKED BY: PBB/SJK