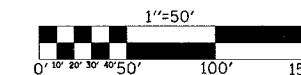


F.A.I. RTE.	SECTION	COUNTY	TOTAL SHEETS	SHEET NO.
72	*	MACON	135	57
STA. 483+00		TO STA. 501+00		
FED. ROAD DIST. NO.		ILLINOIS	FED. AID PROJECT	

(58-62,58-62-1,58-63)RS  
CONTRACT NO. 90879



# TRAFFIC CONTROL STAGE II

STRUCTURE NUMBER 058-0068 W.B. & 058-0069 E.B.  
STRUCTURE NUMBER 058-0070 W.B. & 058-0071 E.B.

PAVEMENT MARKING REMOVAL	STATION TO STATION	SQ. FT.
RT	491+95.75 TO RT 501+00.00	301.12
LT	789+56.46 TO LT 801+00.00	380.80
RT	788+65.97 TO RT 796+91.65	274.95
RT	794+25.23 TO RT 796+91.65	88.42
LT	224+80.00 TO LT 231+00.00	206.46
TOTAL		1251.75

TEMPORARY PAINT PAVEMENT MARKING LINE 4"	STATION TO STATION	FOOT	
RT	491+95.75 TO RT 501+00.00	904.25	WHITE
LT	789+56.46 TO LT 801+00.00	1143.54	YELLOW
RT	788+65.97 TO RT 796+91.65	825.68	WHITE
RT	794+25.23 TO RT 796+91.65	266.42	YELLOW
LT	224+80.00 TO LT 231+00.00	620.00	WHITE
TOTAL		3759.89	

CURVE #1	FAI RTE 72 EB
START	491+95.75
END	502+35.75
RADIUS	3298.0'

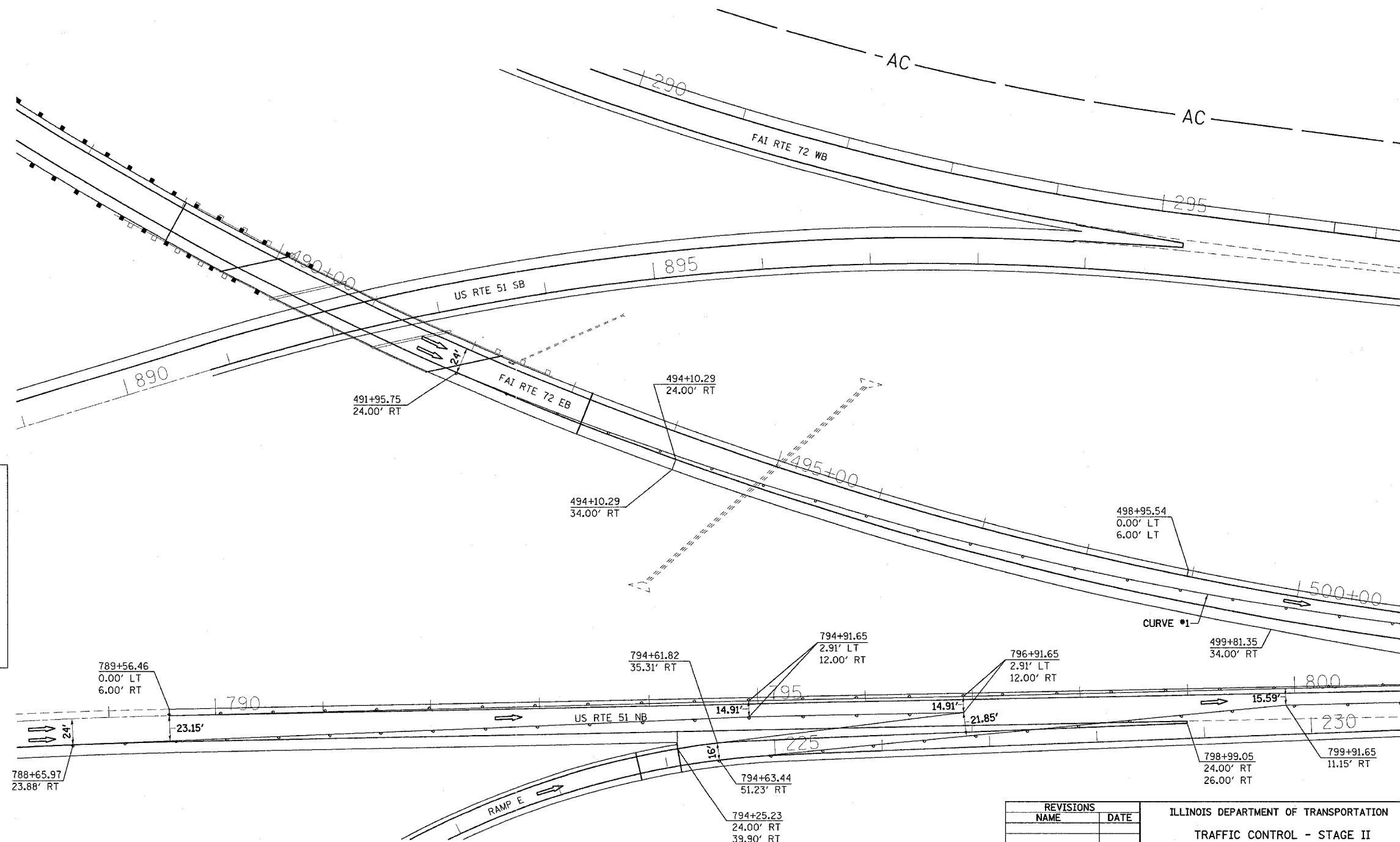
**NOTES:**

TRAFFIC DETAILS NOT SHOWN ARE TO CONFORM WITH STANDARDS 701401, 701402 AND 701411.

DIRECTION INDICATOR BARRICADES REQUIRED IN ALL LANE CLOSER TAPERS WHEN USING STANDARDS 701401 AND 701402.

MESSAGE BOARD MAY BE ADJUSTED TO MEET FIELD CONDITIONS.

RESIDENT ENGINEER AND TRAFFIC CONTROL SUPERVISOR WILL PROVIDE APPROPRIATE MESSAGE FOR THE CHANGEABLE MESSAGE SIGN.



REVISIONS	
NAME	DATE

ILLINOIS DEPARTMENT OF TRANSPORTATION

TRAFFIC CONTROL - STAGE II

F.A.I. ROUTE 72

SECTION (58-62,58-62-1,58-63)RS

MACON COUNTY

SCALE: VERT. 1" = 50'  
HORIZ. 1" = 50'

DATE 10/22/03

DRAWN BY CADD  
CHECKED BY