

CONTRACT # 91260				
ROUTE NO.	SECTION	COUNTY	TOTAL SHEETS	SHEET NO.
T.R. 408	98-02117-00-BR	SHELBY	14	1
ROAD DISTRICT	ILLINOIS	BIG SPRING		

STATE OF ILLINOIS
DEPARTMENT OF TRANSPORTATION
DIVISION OF HIGHWAYS
PLANS FOR PROPOSED
BRIDGE REPLACEMENT AND REHABILITATION PROGRAM
BIG SPRING ROAD DISTRICT
SECTION 98-02117-00-BR
SHELBY COUNTY
PROJECT NO. BROS-173(117)
TOWNSHIP ROUTE 408
C-95-003-02

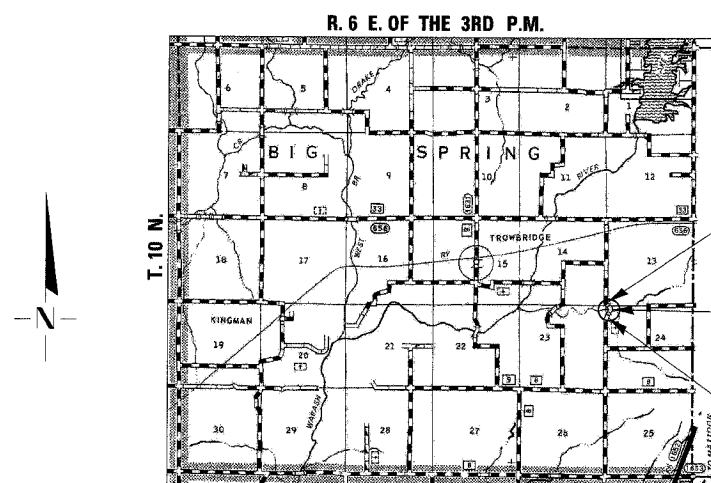
INDEX OF SHEETS	
SHEET NO.	TITLE
1.	COVER SHEET
2.	SUMMARY OF QUANTITIES, GENERAL NOTES & TYPICAL SECTIONS
3.	PLAN AND PROFILE
4.-8.	BRIDGE PLANS
9.-13.	STATION CROSS SECTIONS
14.	EROSION CONTROL PLANS

STANDARDS:

000001-04	STANDARD SYMBOLS, ABBREVIATIONS, AND PATTERNS
280001-02	TEMPORARY EROSION CONTROL SYSTEMS
515001-02	NAME PLATE FOR BRIDGES
630001-05	STEEL PLATE BEAM GUARDRAIL
631026-02	TRAFFIC BARRIER TERMINAL, TYPE 5 AND 5A
702001-05	TRAFFIC CONTROL DEVICES
BLR 21-6	TYPICAL APPLICATION OF TRAFFIC CONTROL DEVICES FOR CONSTRUCTION ON RURAL LOCAL HIGHWAYS
BLR 23-1	TRAFFIC BARRIER TERMINAL TYPE 1

SCALES

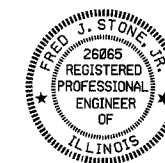
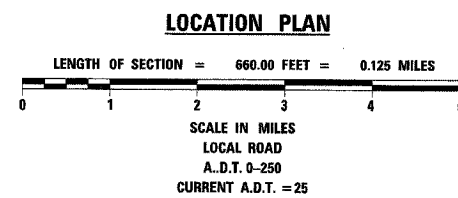
PLAN	0' 50' 100'
PROFILE HORIZ.	0' 50' 100'
PROFILE VERT.	0' 5' 10'
CROSS SECTIONS	0' 5' 10'



IMPROVEMENT ENDS
STA. 19+60

STA. 14+99 - SPECIAL BRIDGE DESIGN
PRECAST PRESTRESSED CONCRETE DECK BEAM BRIDGE.
ONE SPAN AT 77'-0", 24'-0" ROADWAY., SKEW=0°
EXISTING S.N. 087-3287
PROPOSED S.N. 087-3510

IMPROVEMENT BEGINS
STA. 13+00



Fred J. Stone, Jr. (12-103)
ILLINOIS PROFESSIONAL NO. 26065
EXPIRES 11-30-05

TOLL FREE JOINT UTILITY LOCATING
INFORMATION FOR EXCAVATORS (J.U.L.I.E.)
TELEPHONE NUMBER 1-800-892-0123

PASSED	10-20	2004
	<i>David Williams</i>	
	ROAD DISTRICT COMMISSIONER	
APPROVED	05 October	2004
	<i>David Williams</i>	
	COUNTY ENGINEER	
PASSED	11/8	2004
	<i>David Williams</i>	
	DISTRICT ENGINEER OF LOCAL ROADS & STREETS	
APPROVED	Nov 9	2004
	<i>David Williams</i>	
	DISTRICT ENGINEER	

STATE OF ILLINOIS
DEPARTMENT OF TRANSPORTATION

CONTRACT NO. 91260

4440 ASH GROVE
SPRINGFIELD, IL 62707
(217) 793-8800
oasinc@amvid.com

OZYURT AND STONE, INC.
CONSULTING ENGINEERS