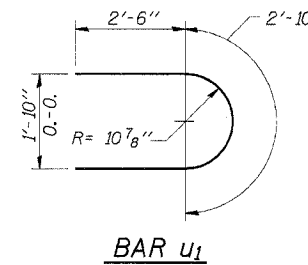
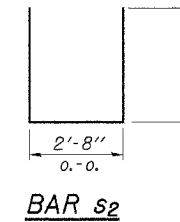


PLAN

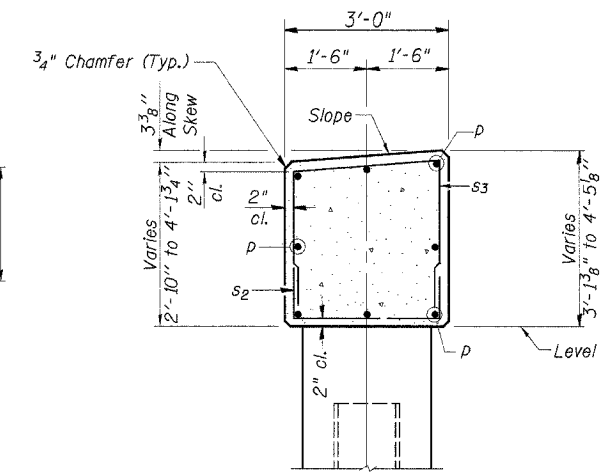
Note: All edges shall have standard 3/4" chamfer



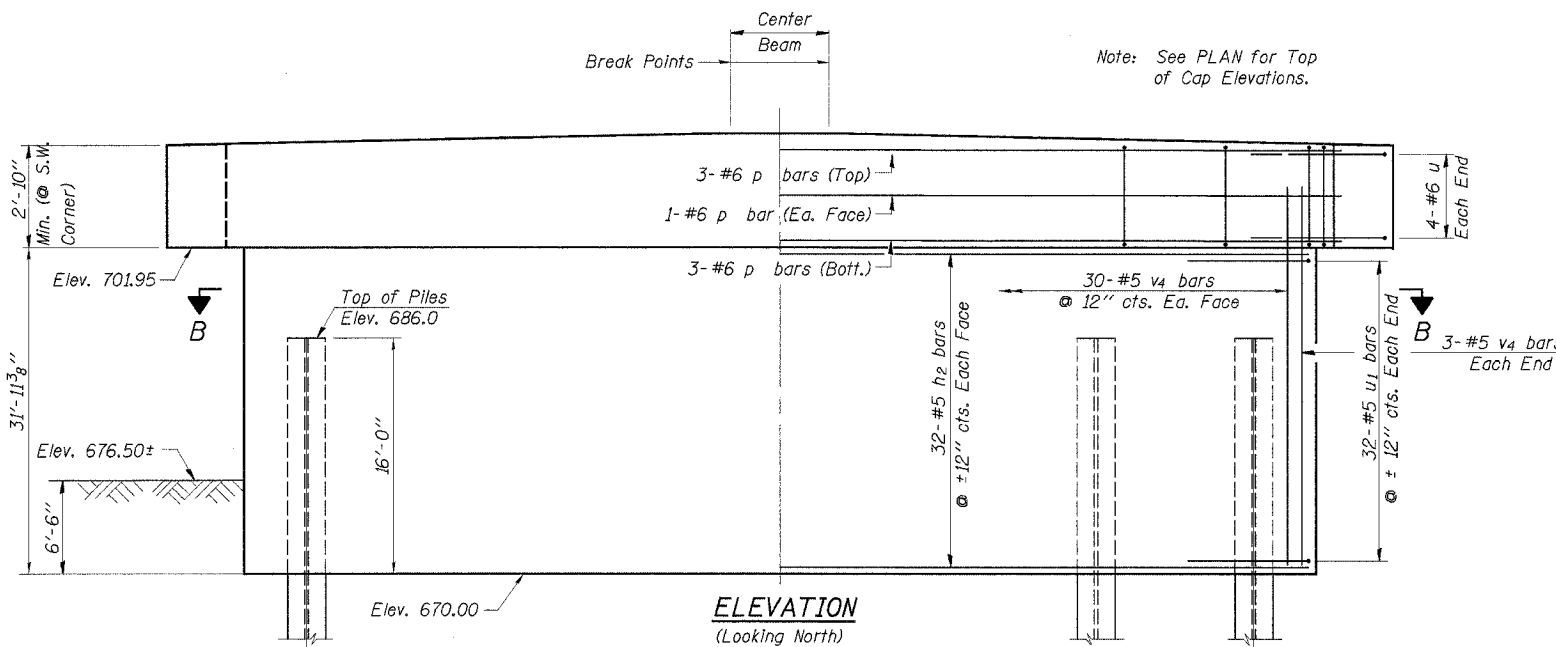
BAR U1



BAR S2

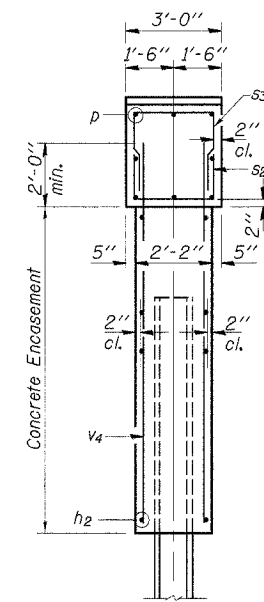


SECTION A-A

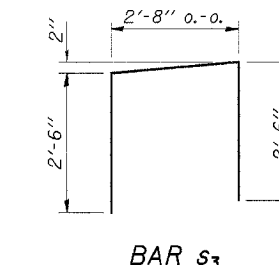


ELEVATION
(Looking North)

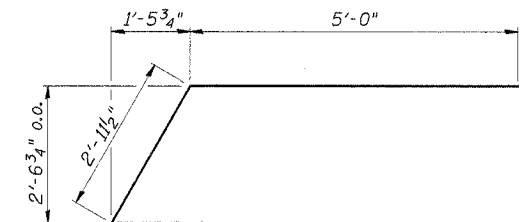
Note: See PLAN for Top of Cap Elevations.



END VIEW



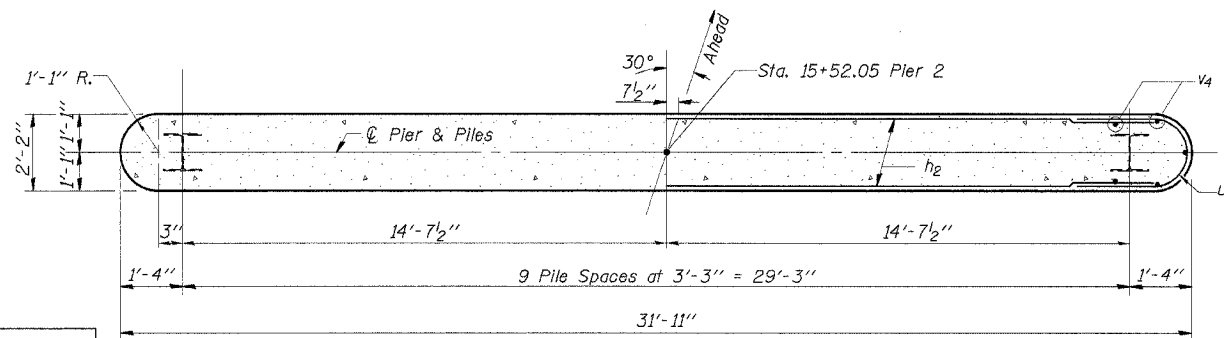
BAR S3



BAR U

BILL OF MATERIAL

BAR	NO.	SIZE	LENGTH	SHAPE
h2	64	#5	29'-9"	—
p	8	#7	32'-8"	—
s2	32	#5	7'-8"	U
s3	32	#5	7'-8"	U
u	8	#6	13'-0"	U
u1	64	#5	7'-10"	U
v4	66	#5	33'-8"	—
Concrete Structures			Cu. Yd.	13.9
Reinforcement Bars			Pound	6030
Steel Piles HP12x53			Foot	306
Underwater Structure Excavation and Protection - Location No. 2			Each	1
Test Pile Steel HP12x53			Each	1
Concrete Encasement			Cu. Yd.	80.7



SECTION B-B

PILE DATA

Type..... Steel Piles HP12x53
 Design Capacity..... 55 Tons/Pile
 Drive to..... 75 Tons/Pile
 Est. Length..... 34 Feet/Pile
 No. Req'd..... *10

*Includes one test pile to be driven in a permanent location, at pier 2

DESIGNED	SFM
CHECKED	FJS
DRAWN	SAP & KTR
CHECKED	SFM

PIER 2

SECTION 01-1135-00-BR
WAPELLA ROAD DISTRICT
DEWITT COUNTY
STATION 15+27

4440 ASH GROVE SPRINGFIELD, IL 62707 (217) 793-8600 oasinc@tamvid.com	OZYURT AND STONE, INC. CONSULTING ENGINEERS	JOB NO.: 0209 FILE: PIER2.DGN DATE: 05-10-04
--	---	--