

INDEX OF SHEETS

- 1 Cover Sheet
- 2 Summary of Quantities, General Notes, and Typical Sections
- 3 Plan and Profile
- 4 Horizontal Layout
- 5-7 Station Cross Sections
- 8 Storm Water Pollution Prevention and Erosion Control Plan
- 9-16 Bridge Plans

LIST OF STANDARDS

- Standard 000001-04 Standard symbols, abbreviations and patterns
- Standard 280001-02 Temporary erosion control systems
- Standard 515001-02 Name plate for bridges
- Standard 701011-01 Off-road moving operations, 2-l, 2-w, day only, for speeds > 45 mph
- Standard 701301-02 Lane closure, 2-l, 2-w, short time operations
- Standard 702001-05 Traffic control devices
- Standard BLR-21-6 Typical application of traffic control devices for Construction on Rural Local Highways
- Standard BLR-22-4 Typical application of traffic control devices 2-l, 2-w, rural, Road closed to Thru Traffic

ROADWAY CLASSIFICATION: LOCAL ROAD
 2021 ADT = 75
 DESIGN SPEED: 30 MPH
 DESIGN GUIDELINES: RURAL
 VARIANCES GRANTED: NONE
 COMMITMENTS: NONE

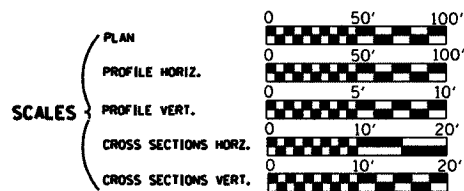
JOINT UTILITY LOCATING INFORMATION FOR EXCAVATORS

J.U.L.I.E. Telephone No. Toll Free 1-800-892-0123

CONTRACT NO. : 91317

3040 N. UNIVERSITY AVE., SUITE ONE
 DECATUR, ILLINOIS 62526-1343
 PH. 217-875-4800

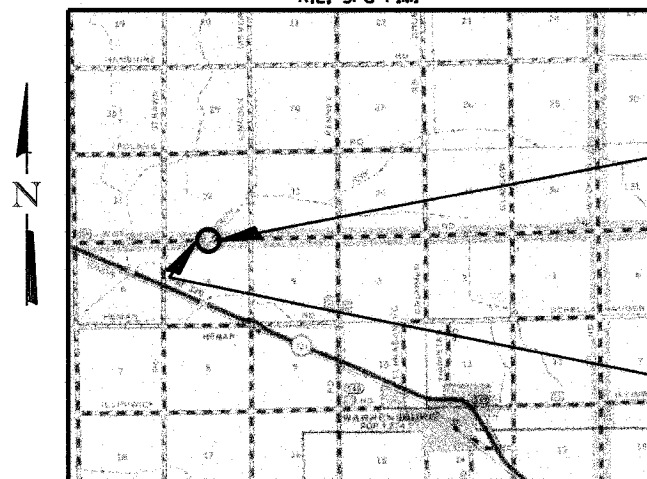
STATE OF ILLINOIS DEPARTMENT OF TRANSPORTATION DIVISION OF HIGHWAYS PLANS FOR PROPOSED LOCAL AGENCY IMPROVEMENT



BRIDGE REPLACEMENT AND REHABILITATION PROGRAM C.H. 54 OVER SOUTH FORK CREEK SECTION 03-00177-00-BR MACON COUNTY PROJECT BR05-115(51)

C-95-317-04

RIE, 3rd P.M.



IMPROVEMENT ENDS
 STA. 19+00.00

EXIST. STR. NO. 058-3054
 PROP. STR. NO. 058-3365

IMPROVEMENT BEGINS
 STA. 11+00.00

IMPROVEMENT CONSISTS OF THE REMOVAL OF A SINGLE SPAN STEEL PONY TRUSS BRIDGE WITH CONCRETE DECK ON CLOSED CONCRETE ABUTMENTS. O-O DECK = 18'-0", BK.-BK. ABUTMENTS = 101'-0" AND THE CONSTRUCTION OF A THREE SPAN PRECAST PRESTRESSED CONCRETE DECK BEAM BRIDGE ON CONCRETE SPILL THRU ABUTMENTS AND CONCRETE PILE BENT PIERS. TOTAL LENGTH = 130'-4 1/4", WIDTH = 24'-0" O-O DECK AND NECESSARY APPROACH ROADWAY WORK.

LAYOUT

Approximate Scale: scale miles

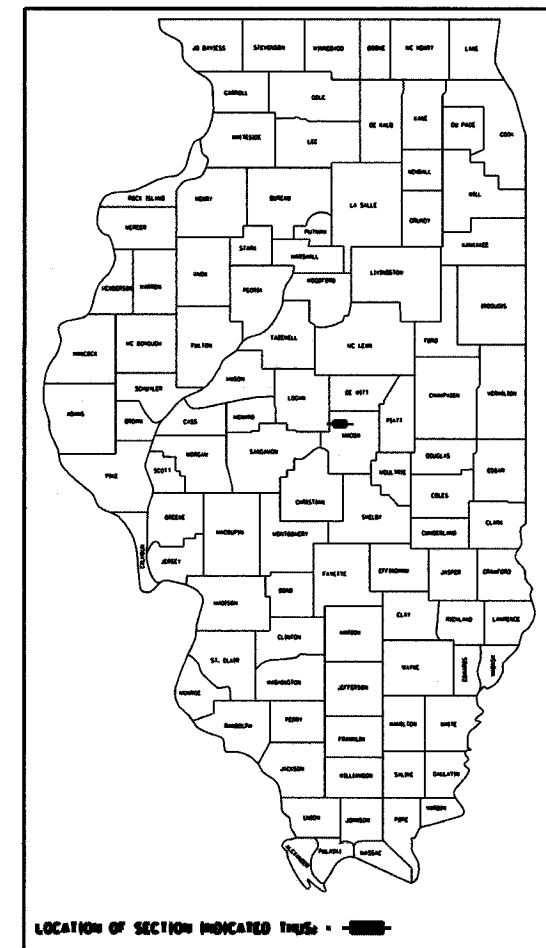
Total and Net Length of Improvement 800.00 Feet = 0.152 Miles



George A. Convey
 Illinois Professional No. 30032

RTE. NO.	SECTION	COUNTY	TOTAL SHEET NO.
C.H. 54	03-00177-00-BR	MACON	16
FED. ROAD DIST. NO.	ILLINOIS PROJECT		

CONTRACT NO. 91317



PLANS DEVELOPED IN ACCORDANCE WITH F.A.P.L.H.I. MANUAL

STATE OF ILLINOIS DEPARTMENT OF TRANSPORTATION	
APPROVED <u>December 13, 2004</u>	<i>Tom A. Si</i> COUNTY ENGINEER
PASSED <u>12/22, 2004</u>	<i>David A. Si</i> DISTRICT ENGINEER OF LOCAL ROADS AND STREETS
APPROVED <u>December 13, 2004</u>	<i>[Signature]</i> DISTRICT ENGINEER

December 13, 2004
Date