

BENCHMARK:

R.R. SPIKE IN POWER POLE
 STA. 13+70.24, 28.2' RT.
 ELEV. 100.00

EXISTING STRUCTURE NO. 058-3054

SINGLE SPAN STEEL PONY TRUSS BRIDGE WITH CONCRETE
 DECK ON CLOSED CONCRETE ABUTMENTS WITH CONCRETE WINGWALLS.
 101'-0" BK.-BK. ABUTMENTS
 18'-0" O.-O. DECK

**JAMES & MARILYN
 JACKSON**

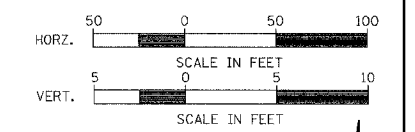
STA. 15+03.44, SPECIAL BRIDGE DESIGN,
 THREE SPAN PPC DECK BEAM BRIDGE,
 SPANS OF 27'-5 1/4", 68'-5 1/4" & 27'-5 1/4"
 ON CONC. PILE BENT ABUT'S. AND
 CONC. PILE BENT PIERS. LENGTH = 130'-4 1/4"
 BK.-BK. ABUT'S., WIDTH = 24'-0" O.-O. DECK
 SKEW = 40° LT. FWD.

CREEK LAKE CO.

RTE.	SECTION	COUNTY	TOTAL SHEETS	SHEET NO.
C.H. 54	03-00177-00-BR	MACON	16	3

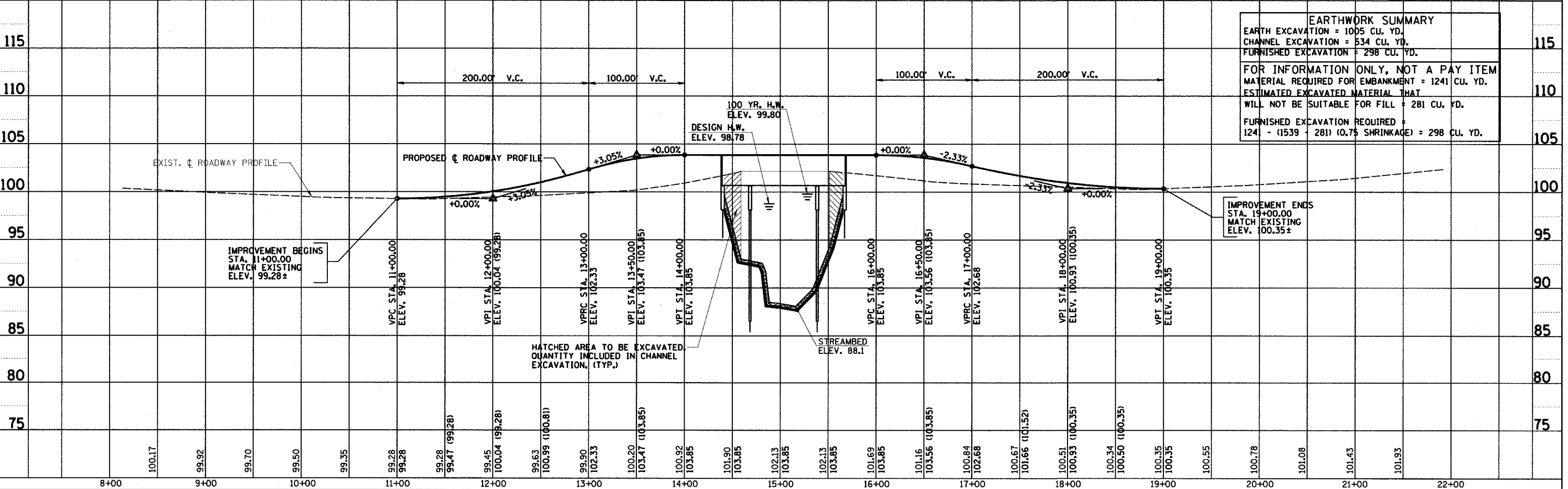
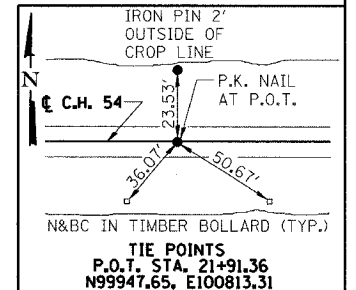
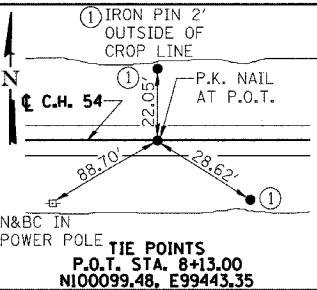
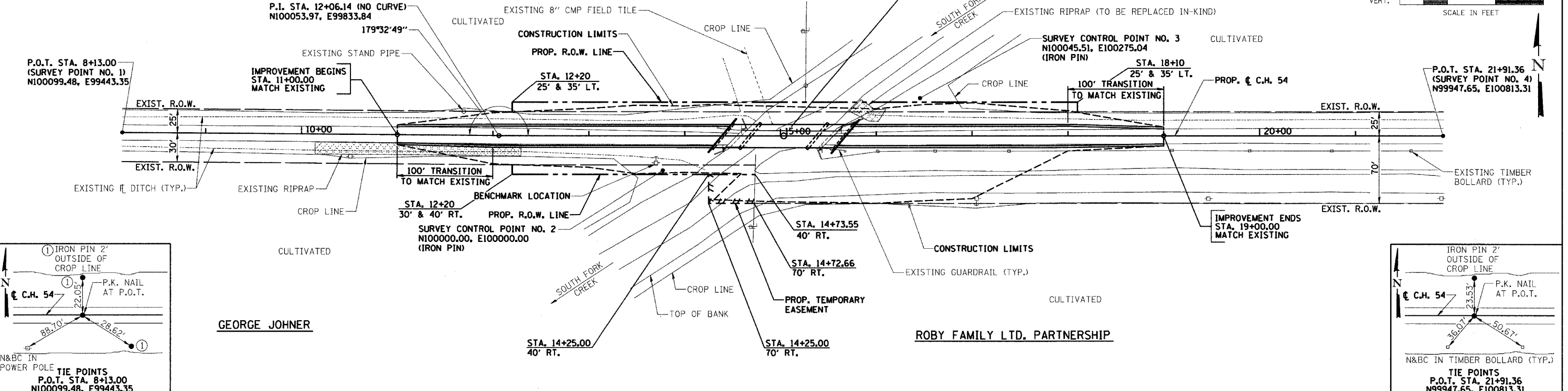
STA. 8+13.00 TO STA. 21+91.36
 FED. ROAD DIST. NO. ILLINOIS PROJECT

CONTRACT NO. 91317



DATE	BY	REVISION

DATE	BY	REVISION



EARTHWORK SUMMARY	
EARTH EXCAVATION =	1005 CU. YD.
CHANNEL EXCAVATION =	534 CU. YD.
FURNISHED EXCAVATION =	298 CU. YD.
FOR INFORMATION ONLY, NOT A PAY ITEM	
MATERIAL REQUIRED FOR EMBANKMENT =	1241 CU. YD.
ESTIMATED EXCAVATED MATERIAL THAT	
WILL NOT BE SUITABLE FOR FILL =	281 CU. YD.
FURNISHED EXCAVATION REQUIRED =	1241 - (1539 - 281) (0.75 SHRINKAGE) = 298 CU. YD.

DATE	BY	REVISION

DATE	BY	REVISION