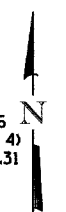
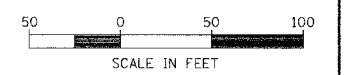
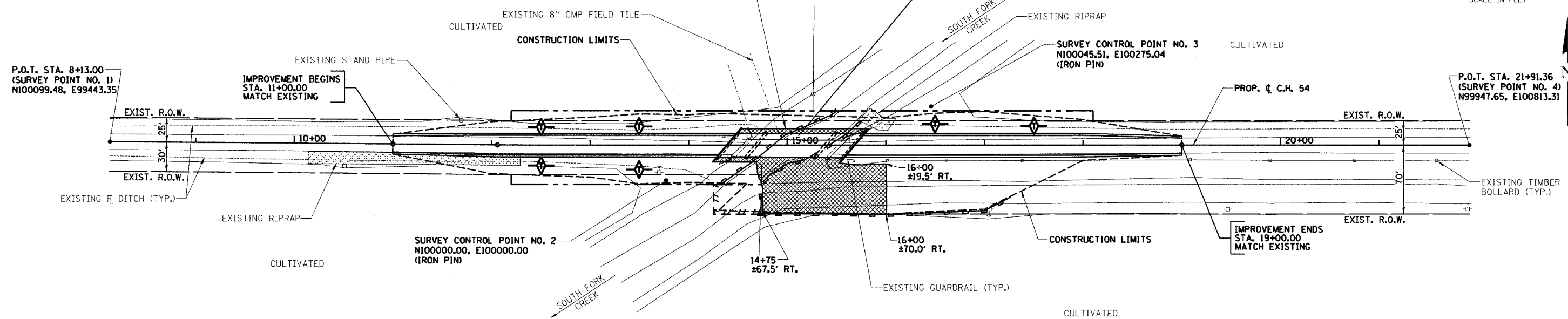


RTE.	SECTION	COUNTY	TOTAL SHEETS	SHEET NO.
C.H. 54	03-00177-00-BR	MACON	16	8
STA. 11+00.00 TO STA. 19+00.00				
FED. ROAD DIST. NO.	ILLINOIS PROJECT			

CONTRACT NO. 91317



STA. 15+03.44, SPECIAL BRIDGE DESIGN, THREE SPAN PPC DECK BEAM BRIDGE, SPANS OF 27'-5 1/4", 68'-5 1/4" & 27'-5 1/4" ON CONC. PILE BENT ABUT'S. AND CONC. PILE BENT PIERS. LENGTH = 130'-4 3/4" BK.-BK. ABUT'S., WIDTH = 24'-0" O.-O. DECK SKEW = 40° LT. FWD.



DATE	BY	REVISION

DATE	BY	REVISION

**LEGEND**

- TEMPORARY AGGREGATE DITCH CHECK (TYP.) (COST INCLUDED IN TEMPORARY DITCH CHECKS. SEE STD. 280001)
- PERIMETER EROSION BARRIER

ALL ITEMS SHALL BE CONSTRUCTED AS SHOWN ON STANDARD 280001 AND AS DIRECTED BY THE ENGINEER. MAINTENANCE AND CLEANING OF THE EROSION CONTROL ITEMS SHALL BE INCLUDED IN THE RESPECTIVE EROSION CONTROL PAY ITEM. ALL DITCH CHECKS SHALL BE AGGREGATE.

**STORM WATER POLLUTION PREVENTION PLAN**

**DESCRIPTION OF INTENDED SEQUENCE FOR MAJOR CONSTRUCTION ACTIVITIES:**

1. REMOVAL OF EXISTING STRUCTURE.
2. EXCAVATION WILL BE COMPLETED ALONG THE ENTIRE LENGTH OF THE JOB TO REMOVE THE EXISTING ROADWAY AND GRADE THE PROPOSED DITCHES.
3. NECESSARY EMBANKMENT WILL BE PLACED ALONG THE ENTIRE LENGTH OF THE JOB FOR THE PROPOSED ROADWAY.
4. PLACEMENT, MAINTENANCE, REMOVAL AND PROPER CLEAN-UP OF TEMPORARY EROSION CONTROL ITEMS, SUCH AS PERIMETER EROSION BARRIER, AGGREGATE DITCH CHECKS, TEMPORARY SEEDING AND OTHER MISCELLANEOUS EROSION CONTROL MEASURES.
5. CONSTRUCT NEW BRIDGE SUBSTRUCTURE UNITS.
6. PLACEMENT OF PERMANENT EROSION CONTROL ITEMS, INCLUDING RIPRAP AND SEEDING.
7. CONSTRUCT NEW BRIDGE SUPERSTRUCTURE AND APPROACH ROADWAY.
8. FINAL GRADING AND OTHER MISCELLANEOUS ITEMS.

**SCHEDULE OF EROSION CONTROL QUANTITIES**

- EARTH EXCAVATION FOR EROSION CONTROL**  
TOTAL = 84 CU. YD.
- TEMPORARY EROSION CONTROL SEEDING**  
100 LBS/ACRE X 0.8 ACRES = 80 POUNDS
- SEEDING, CLASS 2**  
AREA INSIDE OF CONSTRUCTION LIMITS, LESS ROADWAY.  
TOTAL = 0.8 ACRES
- NITROGEN FERTILIZER NUTRIENT**  
TOTAL = 72 POUNDS
- PHOSPHORUS FERTILIZER NUTRIENT**  
TOTAL = 72 POUNDS
- POTASSIUM FERTILIZER NUTRIENT**  
TOTAL = 72 POUNDS
- MULCH, METHOD 2**  
TOTAL = 0.8 ACRES
- PERIMETER EROSION BARRIER**  
TO BE CONSTRUCTED AT LOCATIONS SHOWN ON PLANS. LAYOUT MAY VARY AS DIRECTED BY THE ENGINEER.  
TOTAL = 521 FOOT
- TEMPORARY DITCH CHECK**  
STA. 12+50, LT. = 1 EACH  
STA. 12+50, RT. = 1 EACH  
STA. 13+50, LT. = 1 EACH  
STA. 13+50, RT. = 1 EACH  
STA. 16+50, LT. = 1 EACH  
STA. 17+50, LT. = 1 EACH  
TOTAL = 6 EACH

**STORM WATER POLLUTION PREVENTION AND EROSION CONTROL PLAN**