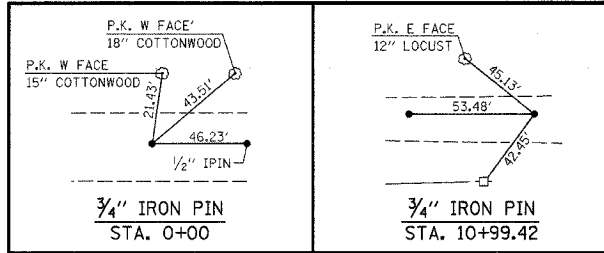
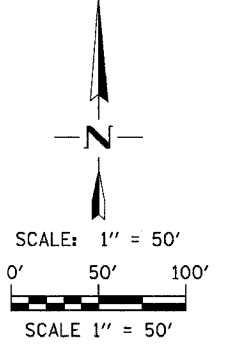
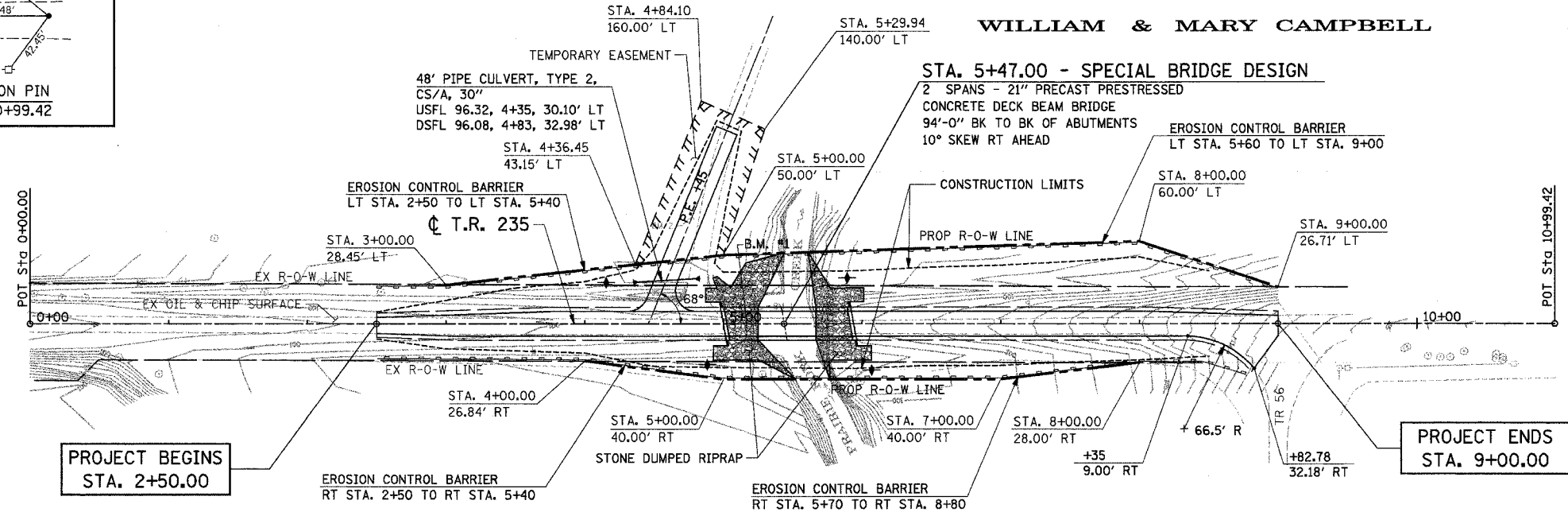


T.R.	SECTION	COUNTY	TOTAL SHEETS	SHEET NO.
235	93-02108-00-BR	CHRISTIAN	16	5
STA. 235		TO STA. 10+99.42		
FED. ROAD DIST. NO.		ILLINOIS FED. AID PROJECT		



S.E. 1/4, S.W. 1/4, SEC. 16, T. 12 N., R. 3 W., 3rd P.M.

WILLIAM & MARY CAMPBELL



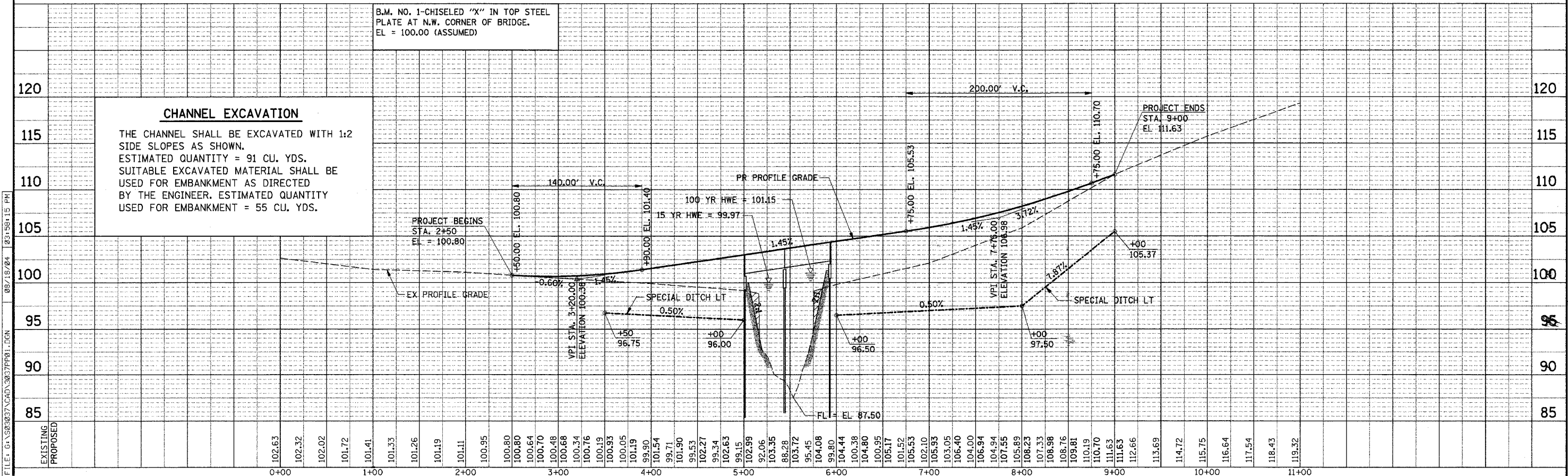
- LEGEND**
- RIPRAP
 - CHANNEL EXCAVATION
 - EROSION BARRIER
 - TEMPORARY DITCH CHECK

DONALD E. HUDDLESTON

N.E. 1/4, N.W. 1/4, SEC 21, T. 12 N., R. 3 W., 3rd P.M.

TRANSITION FROM EX RDWY SEC AT STA 2+50 RT TO PR RDWY SEC AT STA 3+10 RT AND FROM EX RDWY SEC STA 2+50 LT TO PR RDWY SEC AT STA 3+70 LT

TRANSITION FROM PR RDWY SEC AT STA 8+07 LT TO EX RDWY SEC AT STA 9+00 LT



CHANNEL EXCAVATION

THE CHANNEL SHALL BE EXCAVATED WITH 1:2 SIDE SLOPES AS SHOWN. ESTIMATED QUANTITY = 91 CU. YDS. SUITABLE EXCAVATED MATERIAL SHALL BE USED FOR EMBANKMENT AS DIRECTED BY THE ENGINEER. ESTIMATED QUANTITY USED FOR EMBANKMENT = 55 CU. YDS.

FILE: G:\303037\CADD\3037FP01.DGN 08/18/04 03:58:15 PM