

94367

F.A.P. RTE.	SECTION	COUNTY	TOTAL SHEETS	SHEET NO.
328	5R, Y, RS-1	CLAY	376	1
FED. ROAD DIST. NO. 7		ILLINOIS FED. AID PROJECT		

STATE OF ILLINOIS
DEPARTMENT OF TRANSPORTATION
DIVISION OF HIGHWAYS

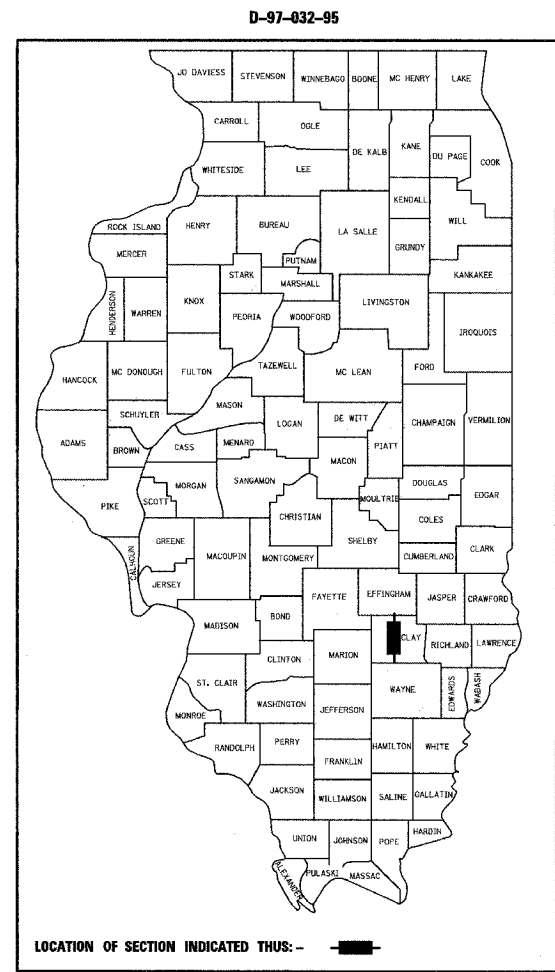
PLANS FOR PROPOSED FEDERAL HIGHWAY PROJECT

FAP 328 (US 45)
SECTION 5R, Y, RS-1
PROJECT NO: ACF-0328(013)
PAVEMENT RECONSTRUCTION & RESURFACING
CLAY COUNTY

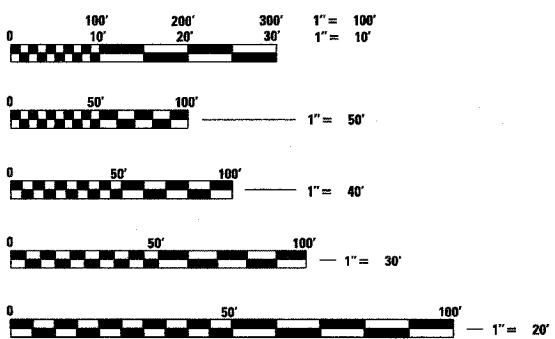
C-97-049-96

FOR INDEX OF SHEETS
SEE SHEET 2

2000 ADT = 3107
2000 MAX 8HR VOL = 2330
DESIGN DESIGNATION - 607 (22) RUR PRIN ART 3.81 (FD-20)



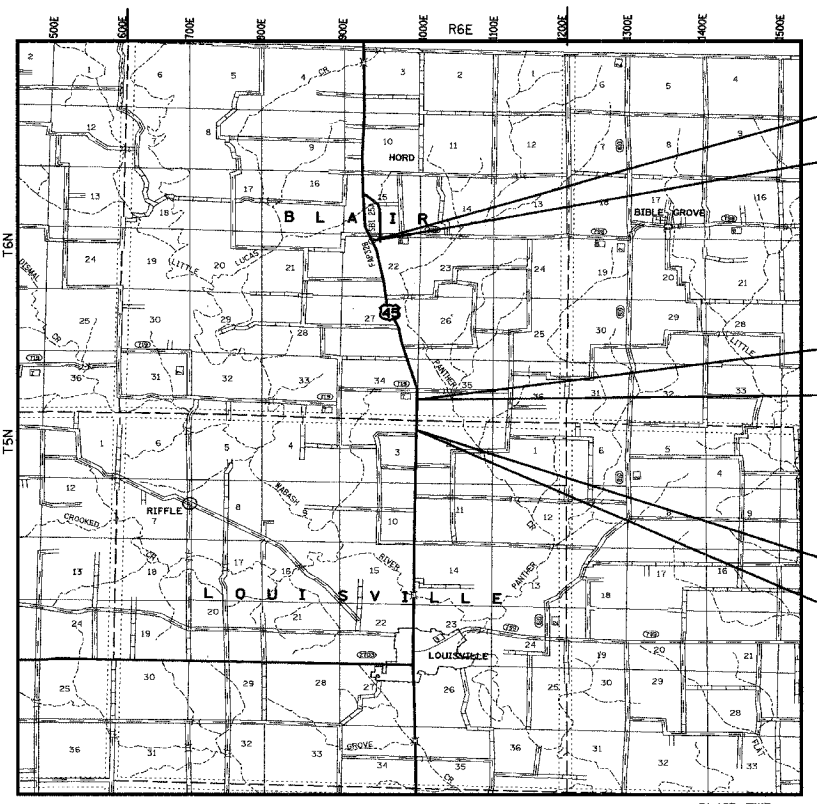
SCALES
PLAN: 1" = 50'
PROFILE HORIZ. 1" = 50'
PROFILE VERT. 1" = 5'
CROSS SECTIONS HORIZ. 1" = 10', VERT. 1" = 5'



FULL SIZE PLANS HAVE BEEN PREPARED USING STANDARD ENGINEERING SCALES, REDUCED SIZED PLANS WILL NOT CONFORM TO STANDARD SCALES, IN MAKING MEASUREMENTS ON REDUCED PLANS, THE ABOVE SCALES MAY BE USED.

J.U.L.I.E.
JOINT UTILITY LOCATION INFORMATION FOR EXCAVATION
1-800-892-0123

CONTRACT NO. 94367



BEGIN CONSTRUCTION
STA. 967 + 50.00

STA EQUATION
STA. 1115 + 51.02 BK =
STA. 1116 + 02.92 AH

END CONSTRUCTION
STA. 1143 + 50.00

LOCATION MAP
SCALE: 1" = 5280'

TOTAL LENGTH OF PROJECT = 17,548.10 FEET = 3.324 MILES

PROJECT ENGINEER: MARK DAUGHERTY
SQUAD LEADER: BRIAN LEWIS
TELEPHONE: 217/342-3951 EX 341



MARK A. REITZ P.E.#062-047531 DATE 12-16-04
HURST-ROSCHÉ ENGINEERS, INC.

STATE OF ILLINOIS
DEPARTMENT OF TRANSPORTATION
DIVISION OF HIGHWAYS

SUBMITTED DEC 17 20 04
Christ M. Reed
DEPUTY DIRECTOR OF HIGHWAYS
REGION FOUR ENGINEER

20

ENGINEER OF PROJECT DEVELOPMENT AND IMPLEMENTATION
February 4, 20 05
Mike Hine
ENGINEER OF DESIGN AND ENVIRONMENT

ENGINEER OF PROJECT DEVELOPMENT AND IMPLEMENTATION
February 4, 20 05
Victor Mader
DIRECTOR, DIVISION OF HIGHWAYS

20

FHW A DIVISION ADMINISTRATOR