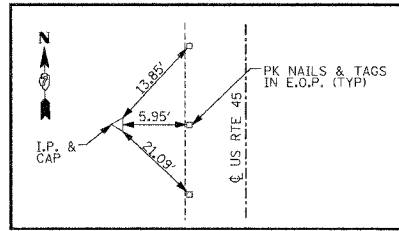
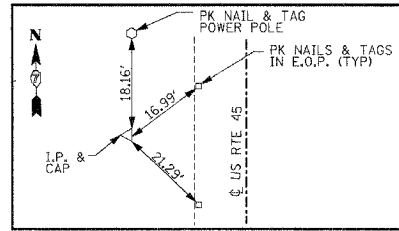


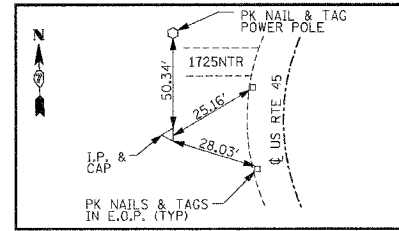
T.P. #46 STA 966+75.76



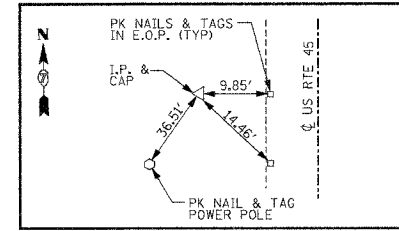
T.P. #45 STA 980+58.81



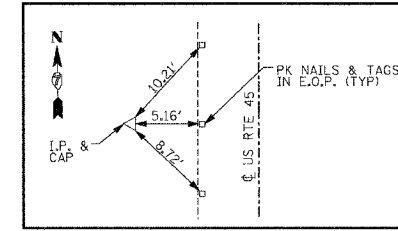
T.P. #44 STA 993+02.11



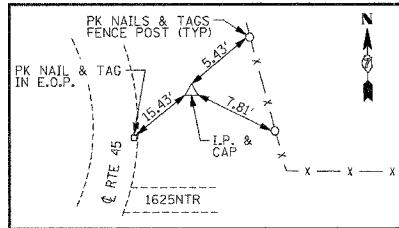
T.P. #43 STA 1006+73.27



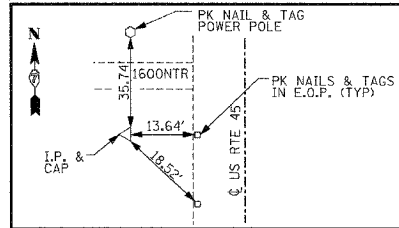
T.P. #42 STA 1021+32.16



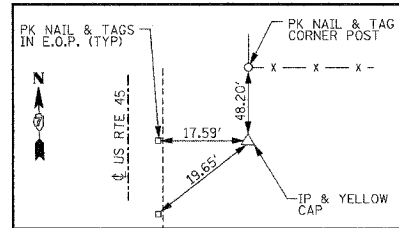
T.P. #41 STA 1042+04.21



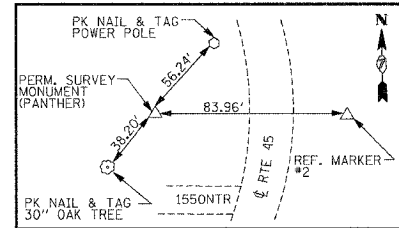
T.P. #40 STA 1057+47.76



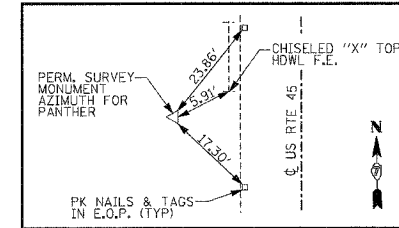
T.P. #39 STA 1076+37.03



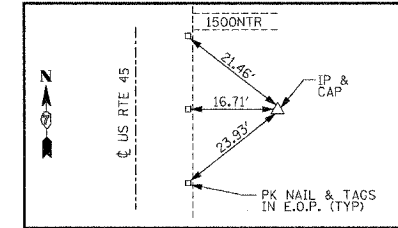
T.P. #38 STA 1093+73.90



T.P. #37 STA 1103+34.39



T.P. #36 STA 1117+53.20



T.P. #35 STA 1131+86.69

REVISIONS	
NAME	DATE

ILLINOIS DEPARTMENT OF TRANSPORTATION
REFERENCE TIES
TRAVERSE STATIONS
US RTE 45

SCALE: NO SCALE
DATE: 12-14-04

DRAWN BY: UJ
CHECKED BY: JJC

11/16/04 11:41:23 AM 12/14/04 8:03:46 AM