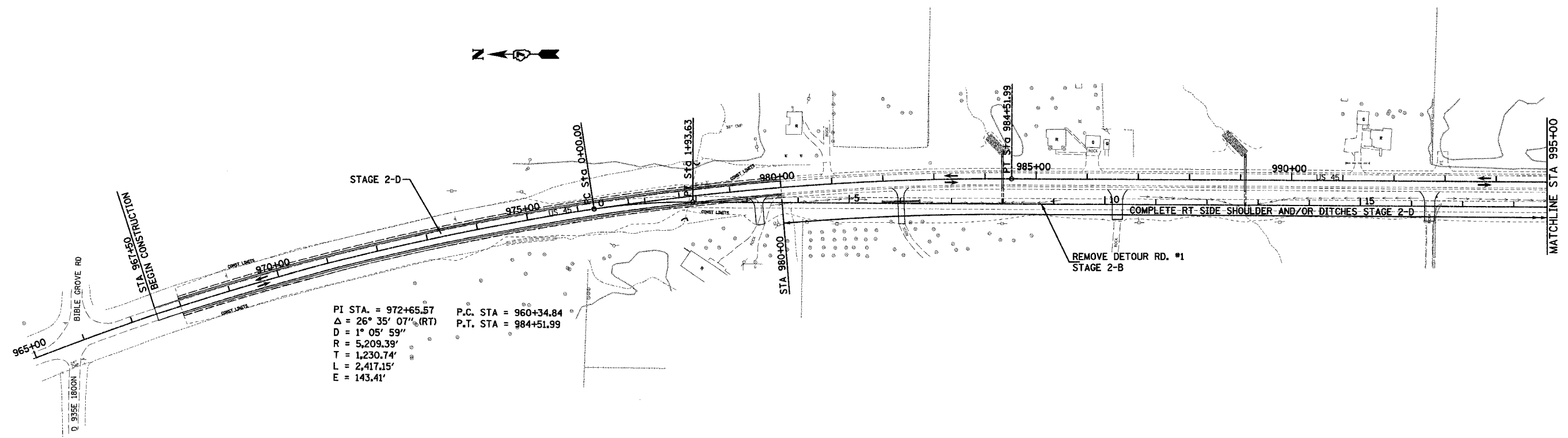


F.A.P. RTE.	SECTION	COUNTY	TOTAL SHEETS	SHEET NO.
328	5R, Y, RS-1	CLAY	376	24
STA.		TO STA.		
FED. ROAD DIST. NO. 7 ILLINOIS		FED. AID PROJECT		
CONTRACT No 94367				

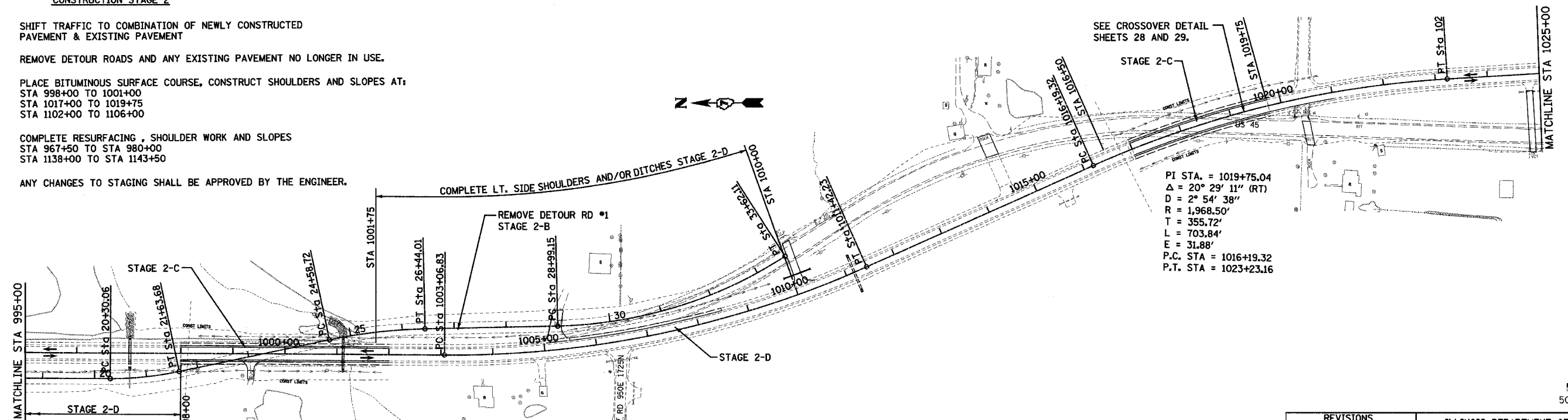


PI STA. = 972+65.57
 $\Delta = 26^\circ 35' 07''$ (RT)
 $D = 1^\circ 05' 59''$
 $R = 5,209.39'$
 $T = 1,230.74'$
 $L = 2,417.15'$
 $E = 143.41'$

P.C. STA = 960+34.84
 P.T. STA = 984+51.99

RECOMMENDED STAGE CONSTRUCTION STAGE 2

- A) SHIFT TRAFFIC TO COMBINATION OF NEWLY CONSTRUCTED PAVEMENT & EXISTING PAVEMENT
- B) REMOVE DETOUR ROADS AND ANY EXISTING PAVEMENT NO LONGER IN USE.
- C) PLACE BITUMINOUS SURFACE COURSE, CONSTRUCT SHOULDERS AND SLOPES AT:
 STA 998+00 TO 1001+00
 STA 1017+00 TO 1019+75
 STA 1102+00 TO 1106+00
- D) COMPLETE RESURFACING, SHOULDER WORK AND SLOPES
 STA 967+50 TO STA 980+00
 STA 1138+00 TO STA 1143+50
- E) ANY CHANGES TO STAGING SHALL BE APPROVED BY THE ENGINEER.

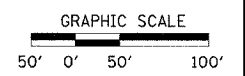


PI STA. = 1019+75.04
 $\Delta = 20^\circ 29' 11''$ (RT)
 $D = 2^\circ 54' 38''$
 $R = 1,968.50'$
 $T = 355.72'$
 $L = 703.84'$
 $E = 31.88'$

P.C. STA = 1016+19.32
 P.T. STA = 1023+23.16

PI STA. = 1007+30.91
 $\Delta = 24^\circ 18' 55''$ (LT)
 $D = 2^\circ 54' 38''$
 $R = 1,968.50'$
 $T = 424.08'$
 $L = 835.40'$
 $E = 45.16'$

P.C. STA = 1003+06.83
 P.T. STA = 1011+42.23



REVISIONS	
NAME	DATE

ILLINOIS DEPARTMENT OF TRANSPORTATION

STAGE 2 CONSTRUCTION

SCALE: VERT. HORIZ. DATE: 12/14/04

DRAWN BY: JJC
CHECKED BY: MAR