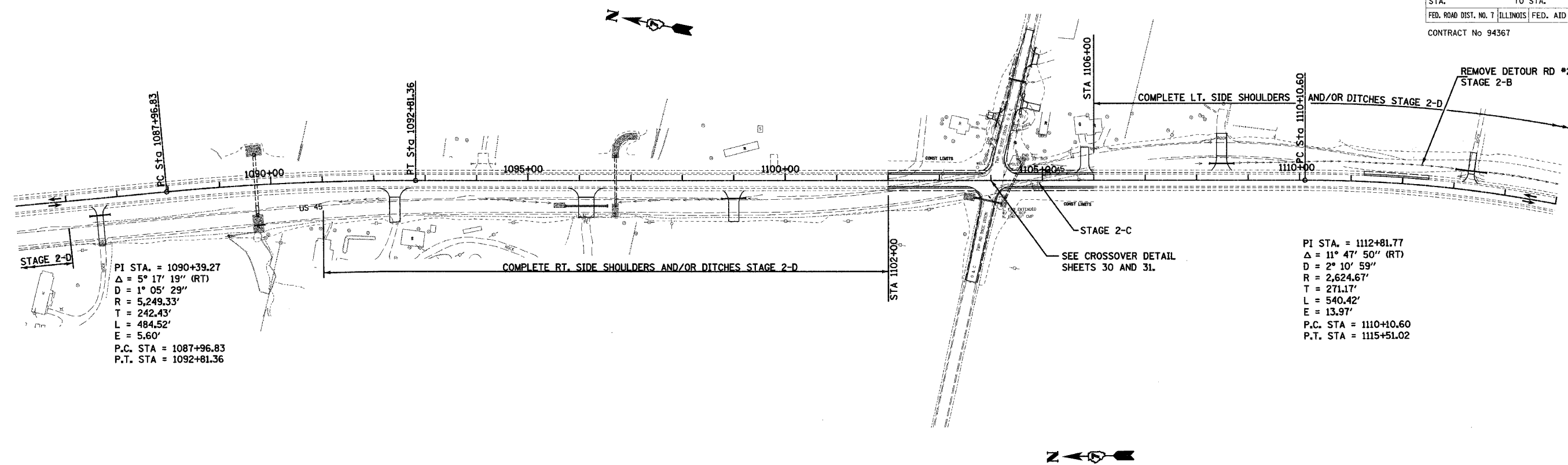
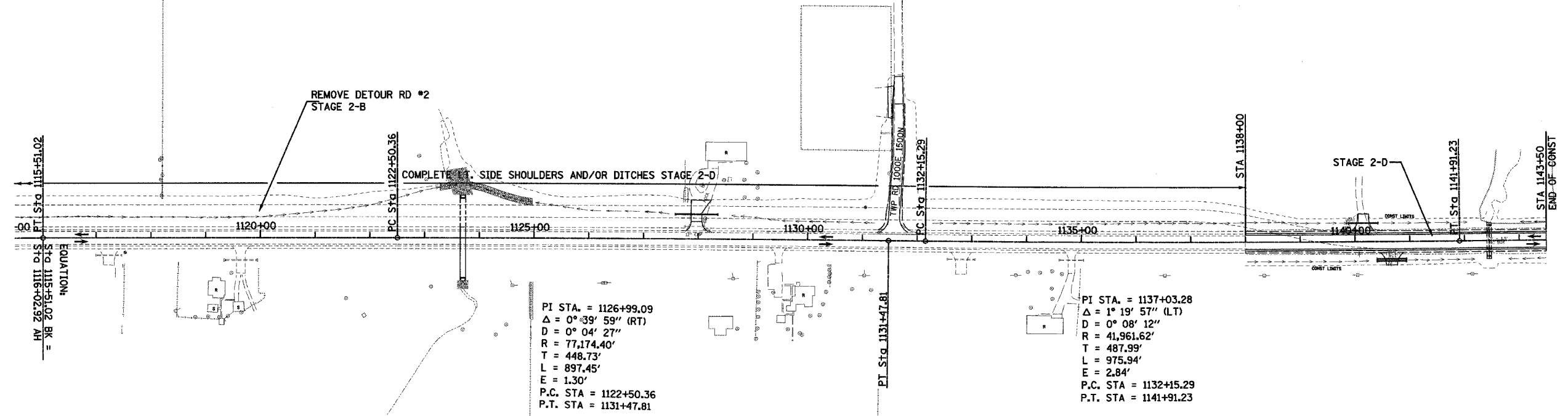


F.A.P. RTE.	SECTION	COUNTY	TOTAL SHEETS	SHEET NO.
328	5R, Y, RS-1	CLAY	376	26
STA.		TO STA.		
FED. ROAD DIST. NO. 7 ILLINOIS		FED. AID PROJECT		
CONTRACT No 94367				



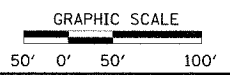
PI STA. = 1090+39.27
 $\Delta = 5^\circ 17' 19''$ (RT)
 $D = 1^\circ 05' 29''$
 $R = 5,249.33'$
 $T = 242.43'$
 $L = 484.52'$
 $E = 5.60'$
 P.C. STA = 1087+96.83
 P.T. STA = 1092+81.36

PI STA. = 1112+81.77
 $\Delta = 11^\circ 47' 50''$ (RT)
 $D = 2^\circ 10' 59''$
 $R = 2,624.67'$
 $T = 271.17'$
 $L = 540.42'$
 $E = 13.97'$
 P.C. STA = 1110+10.60
 P.T. STA = 1115+51.02



PI STA. = 1126+99.09
 $\Delta = 0^\circ 39' 59''$ (RT)
 $D = 0^\circ 04' 27''$
 $R = 77,174.40'$
 $T = 448.73'$
 $L = 897.45'$
 $E = 1.30'$
 P.C. STA = 1122+50.36
 P.T. STA = 1131+47.81

PI STA. = 1137+03.28
 $\Delta = 1^\circ 19' 57''$ (LT)
 $D = 0^\circ 08' 12''$
 $R = 41,961.62'$
 $T = 487.99'$
 $L = 975.94'$
 $E = 2.84'$
 P.C. STA = 1132+15.29
 P.T. STA = 1141+91.23



REVISIONS	
NAME	DATE

ILLINOIS DEPARTMENT OF TRANSPORTATION

STAGE 2 CONSTRUCTION

SCALE: VERT. DRAWN BY: JJC
 HORIZ. DATE: 12/14/04
 DATE: 12/14/04 CHECKED BY: MAR