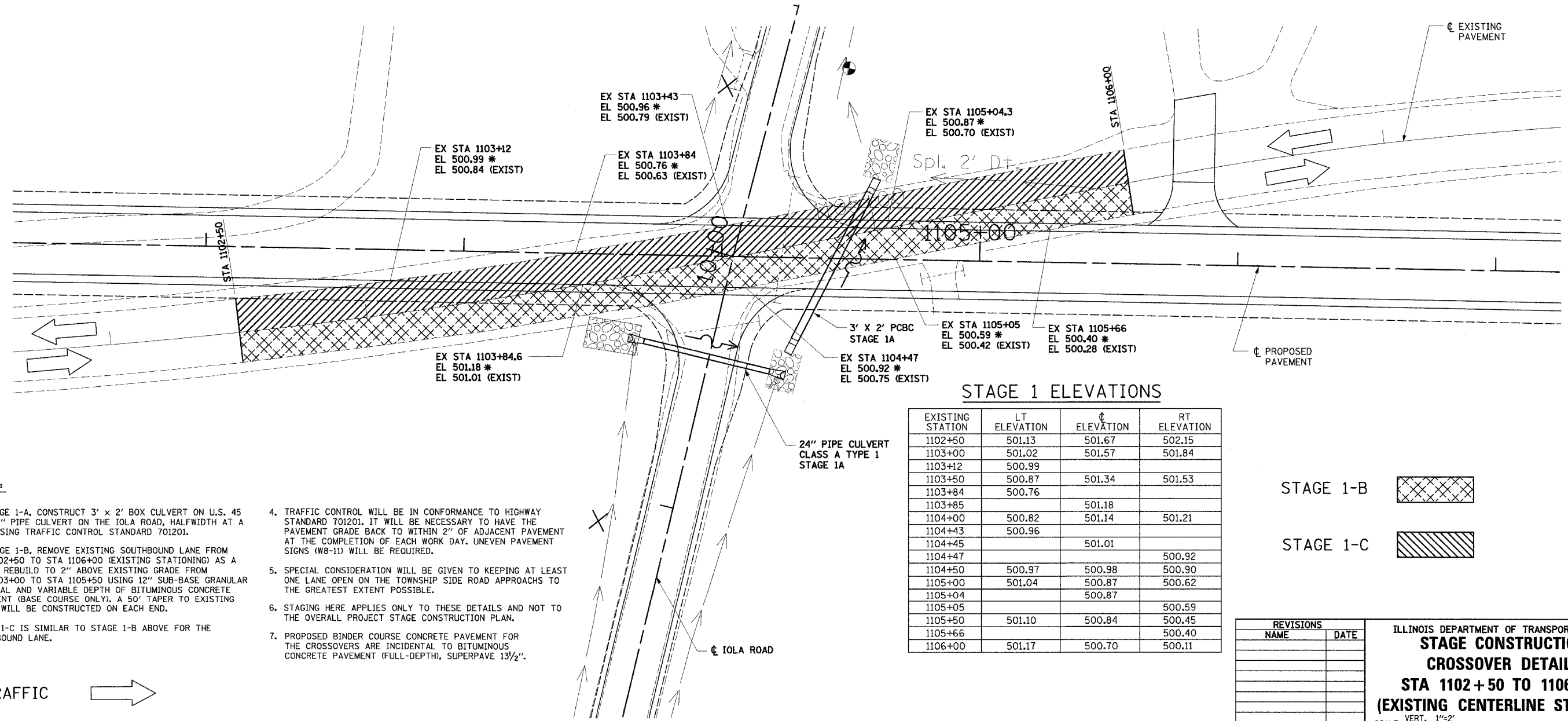
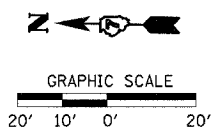


* STAGE 1 ELEVATIONS

EXISTING PAVEMENT PROFILE



STAGE 1 ELEVATIONS

EXISTING STATION	LT ELEVATION	CL ELEVATION	RT ELEVATION
1102+50	501.13	501.67	502.15
1103+00	501.02	501.57	501.84
1103+12	500.99		
1103+50	500.87	501.34	501.53
1103+84	500.76		
1103+85		501.18	
1104+00	500.82	501.14	501.21
1104+43	500.96		
1104+45		501.01	
1104+47			500.92
1104+50	500.97	500.98	500.90
1105+00	501.04	500.87	500.62
1105+04		500.87	
1105+05			500.59
1105+50	501.10	500.84	500.45
1105+66			500.40
1106+00	501.17	500.70	500.11

STAGE 1-B

STAGE 1-C

REVISIONS	
NAME	DATE

ILLINOIS DEPARTMENT OF TRANSPORTATION
**STAGE CONSTRUCTION
 CROSSOVER DETAILS**
**STA 1102+50 TO 1106+00
 (EXISTING CENTERLINE STATIONS)**

SCALE: VERT. 1"=2'
 HORIZ. 1"=20'
 DATE: 12/14/04
 DRAWN BY: JJC
 CHECKED BY: MAR

NOTES:

- IN STAGE 1-A, CONSTRUCT 3' x 2' BOX CULVERT ON U.S. 45 AND 24" PIPE CULVERT ON THE IOLA ROAD, HALFWIDTH AT A TIME USING TRAFFIC CONTROL STANDARD 701201.
- IN STAGE 1-B, REMOVE EXISTING SOUTHBOUND LANE FROM STA 1102+50 TO STA 1106+00 (EXISTING STATIONING) AS A PATCH, REBUILD TO 2" ABOVE EXISTING GRADE FROM STA 1103+00 TO STA 1105+50 USING 12" SUB-BASE GRANULAR MATERIAL AND VARIABLE DEPTH OF BITUMINOUS CONCRETE PAVEMENT (BASE COURSE ONLY). A 50' TAPER TO EXISTING GRADE WILL BE CONSTRUCTED ON EACH END.
- STAGE 1-C IS SIMILAR TO STAGE 1-B ABOVE FOR THE NORTHBOUND LANE.
- TRAFFIC CONTROL WILL BE IN CONFORMANCE TO HIGHWAY STANDARD 701201. IT WILL BE NECESSARY TO HAVE THE PAVEMENT GRADE BACK TO WITHIN 2" OF ADJACENT PAVEMENT AT THE COMPLETION OF EACH WORK DAY. UNEVEN PAVEMENT SIGNS (#8-11) WILL BE REQUIRED.
- SPECIAL CONSIDERATION WILL BE GIVEN TO KEEPING AT LEAST ONE LANE OPEN ON THE TOWNSHIP SIDE ROAD APPROACHES TO THE GREATEST EXTENT POSSIBLE.
- STAGING HERE APPLIES ONLY TO THESE DETAILS AND NOT TO THE OVERALL PROJECT STAGE CONSTRUCTION PLAN.
- PROPOSED BINDER COURSE CONCRETE PAVEMENT FOR THE CROSSOVERS ARE INCIDENTAL TO BITUMINOUS CONCRETE PAVEMENT (FULL-DEPTH), SUPERPAVE 13 1/2".

