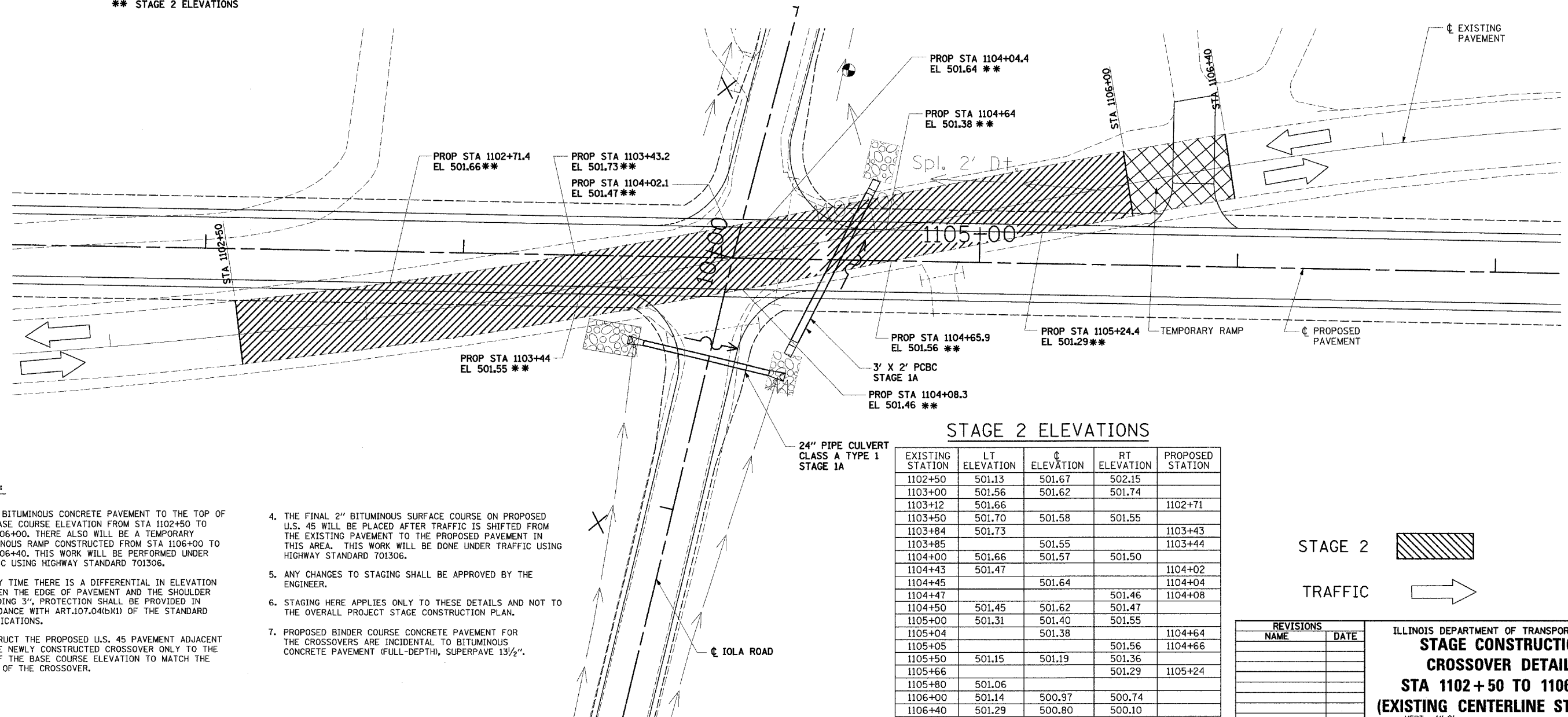
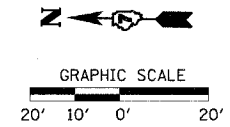


* STAGE 1 ELEVATIONS
** STAGE 2 ELEVATIONS

PAVEMENT PROFILE (EXISTING STATIONING)



STAGE 2 ELEVATIONS

EXISTING STATION	LT ELEVATION	CL ELEVATION	RT ELEVATION	PROPOSED STATION
1102+50	501.13	501.67	502.15	
1103+00	501.56	501.62	501.74	
1103+12	501.66			1102+71
1103+50	501.70	501.58	501.55	
1103+84	501.73			1103+43
1103+85		501.55		1103+44
1104+00	501.66	501.57	501.50	
1104+43	501.47			1104+02
1104+45		501.64		1104+04
1104+47			501.46	1104+08
1104+50	501.45	501.62	501.47	
1105+00	501.31	501.40	501.55	
1105+04		501.38		1104+64
1105+05			501.56	1104+66
1105+50	501.15	501.19	501.36	
1105+66			501.29	1105+24
1105+80	501.06			
1106+00	501.14	500.97	500.74	
1106+40	501.29	500.80	500.10	

STAGE 2
TRAFFIC

NOTES:

- PLACE BITUMINOUS CONCRETE PAVEMENT TO THE TOP OF THE BASE COURSE ELEVATION FROM STA 1102+50 TO STA 1106+00. THERE ALSO WILL BE A TEMPORARY BITUMINOUS RAMP CONSTRUCTED FROM STA 1106+00 TO STA 1106+40. THIS WORK WILL BE PERFORMED UNDER TRAFFIC USING HIGHWAY STANDARD 701306.
- AT ANY TIME THERE IS A DIFFERENTIAL IN ELEVATION BETWEEN THE EDGE OF PAVEMENT AND THE SHOULDER EXCEEDING 3", PROTECTION SHALL BE PROVIDED IN ACCORDANCE WITH ART.107.04(B)(1) OF THE STANDARD SPECIFICATIONS.
- CONSTRUCT THE PROPOSED U.S. 45 PAVEMENT ADJACENT TO THE NEWLY CONSTRUCTED CROSSOVER ONLY TO THE TOP OF THE BASE COURSE ELEVATION TO MATCH THE GRADE OF THE CROSSOVER.
- THE FINAL 2" BITUMINOUS SURFACE COURSE ON PROPOSED U.S. 45 WILL BE PLACED AFTER TRAFFIC IS SHIFTED FROM THE EXISTING PAVEMENT TO THE PROPOSED PAVEMENT IN THIS AREA. THIS WORK WILL BE DONE UNDER TRAFFIC USING HIGHWAY STANDARD 701306.
- ANY CHANGES TO STAGING SHALL BE APPROVED BY THE ENGINEER.
- STAGING HERE APPLIES ONLY TO THESE DETAILS AND NOT TO THE OVERALL PROJECT STAGE CONSTRUCTION PLAN.
- PROPOSED BINDER COURSE CONCRETE PAVEMENT FOR THE CROSSOVERS ARE INCIDENTAL TO BITUMINOUS CONCRETE PAVEMENT (FULL-DEPTH, SUPERPAVE 13 1/2").

REVISIONS	
NAME	DATE

ILLINOIS DEPARTMENT OF TRANSPORTATION
**STAGE CONSTRUCTION
CROSSOVER DETAILS**
STA 1102+50 TO 1106+00
(EXISTING CENTERLINE STATIONS)
SCALE: VERT. 1"=2'
HORIZ. 1"=20'
DATE: 12/14/04
DRAWN BY: JJC
CHECKED BY: WHG