

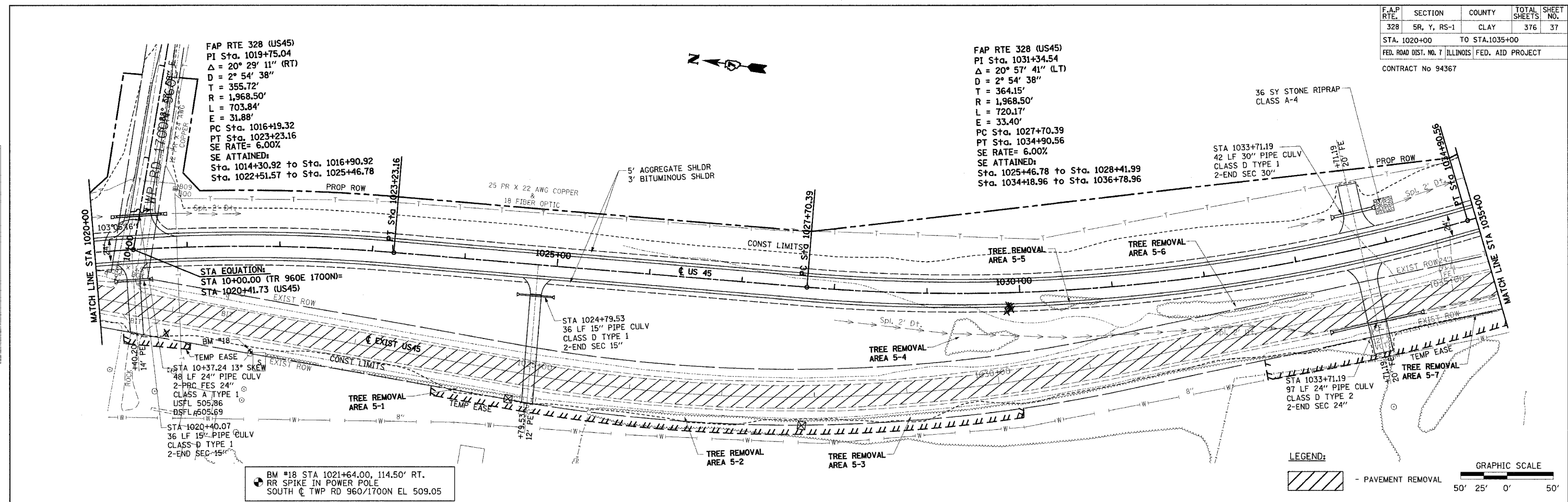
F.A.P. RTE.	SECTION	COUNTY	TOTAL SHEETS	SHEET NO.
328	5R, Y, RS-1	CLAY	376	37
STA. 1020+00		TO STA. 1035+00		
FED. ROAD DIST. NO. 7 ILLINOIS		FED. AID PROJECT		
CONTRACT No 94367				

FAP RTE 328 (US45)
 PI Sta. 1019+75.04
 $\Delta = 20^\circ 29' 11''$ (RT)
 $D = 2^\circ 54' 38''$
 $T = 355.72'$
 $R = 1,968.50'$
 $L = 703.84'$
 $E = 31.88'$
 PC Sta. 1016+19.32
 PT Sta. 1023+23.16
 SE RATE= 6.00%
 SE ATTAINED:
 Sta. 1014+30.92 to Sta. 1016+90.92
 Sta. 1022+51.57 to Sta. 1025+46.78

FAP RTE 328 (US45)
 PI Sta. 1031+34.54
 $\Delta = 20^\circ 57' 41''$ (LT)
 $D = 2^\circ 54' 38''$
 $T = 364.15'$
 $R = 1,968.50'$
 $L = 720.17'$
 $E = 33.40'$
 PC Sta. 1027+70.39
 PT Sta. 1034+90.56
 SE RATE= 6.00%
 SE ATTAINED:
 Sta. 1025+46.78 to Sta. 1028+41.99
 Sta. 1034+18.96 to Sta. 1036+78.96

DATE	BY	REVISION

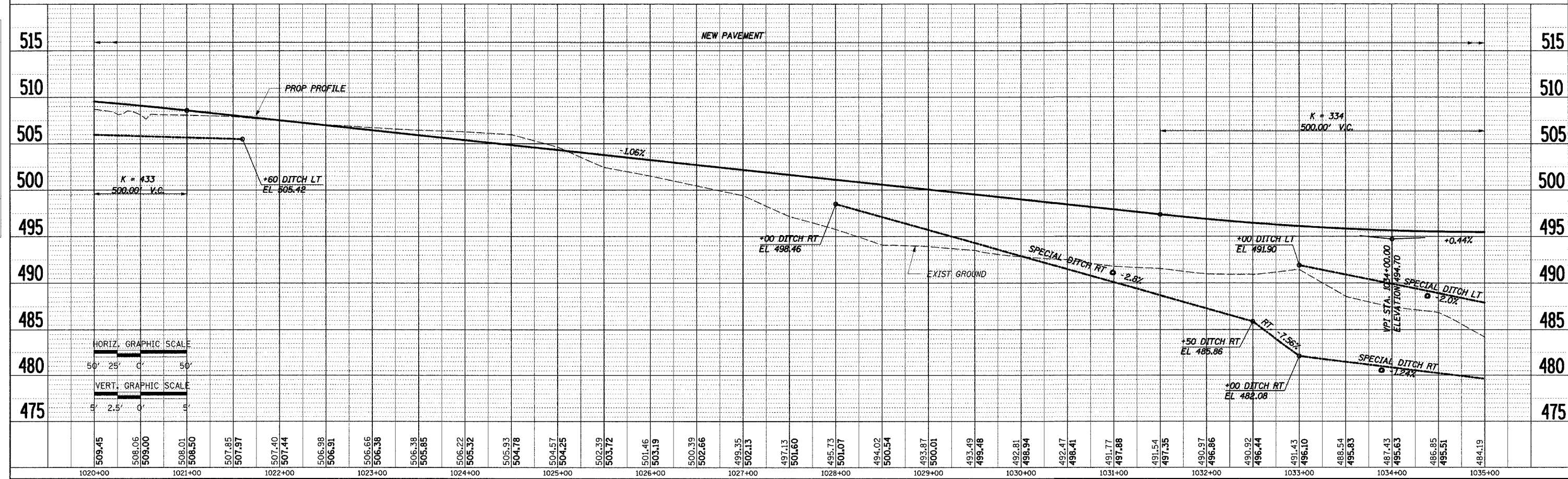
DATE	BY	REVISION



BM #18 STA 1021+64.00, 114.50' RT.
 RR SPIKE IN POWER POLE
 SOUTH ϕ TWP RD 960/1700N EL 509.05

LEGEND:
 - PAVEMENT REMOVAL

GRAPHIC SCALE
 50' 25' 0' 50'



STA 1020+00 TO STA 1035+00