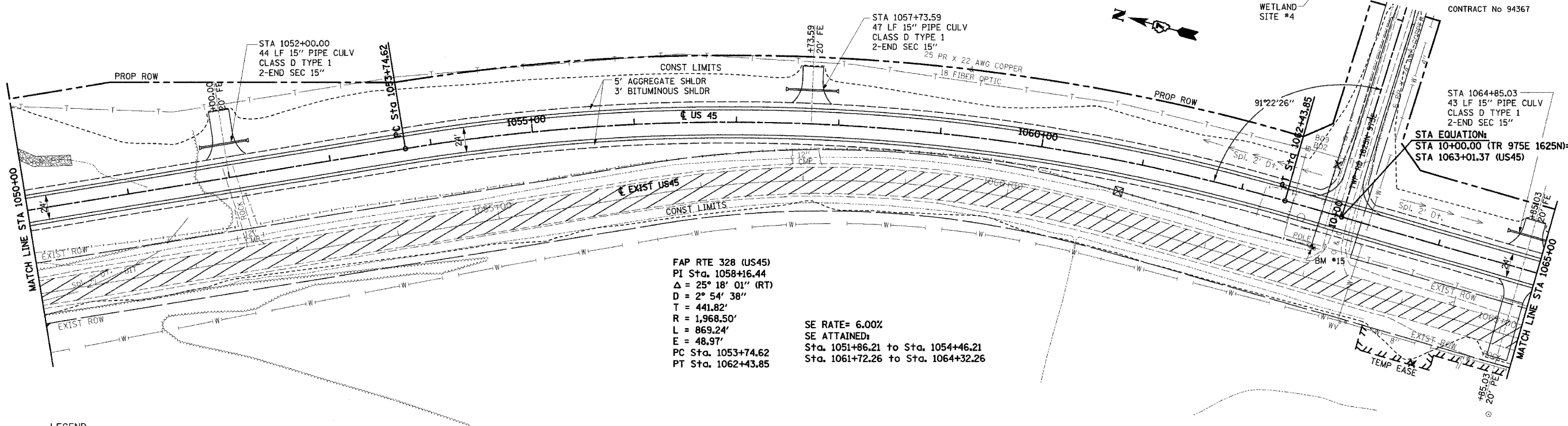


F.A.P. RTE.	SECTION	COUNTY	TOTAL SHEETS	SHEET NO.
328	5R, Y, RS-1	CLAY	376	39
STA. 1050+00		TO STA. 1065+00		
FED. ROAD DIST. NO. 7		ILLINOIS	FED. AID PROJECT	

CONTRACT No 94367

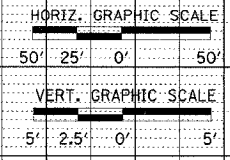
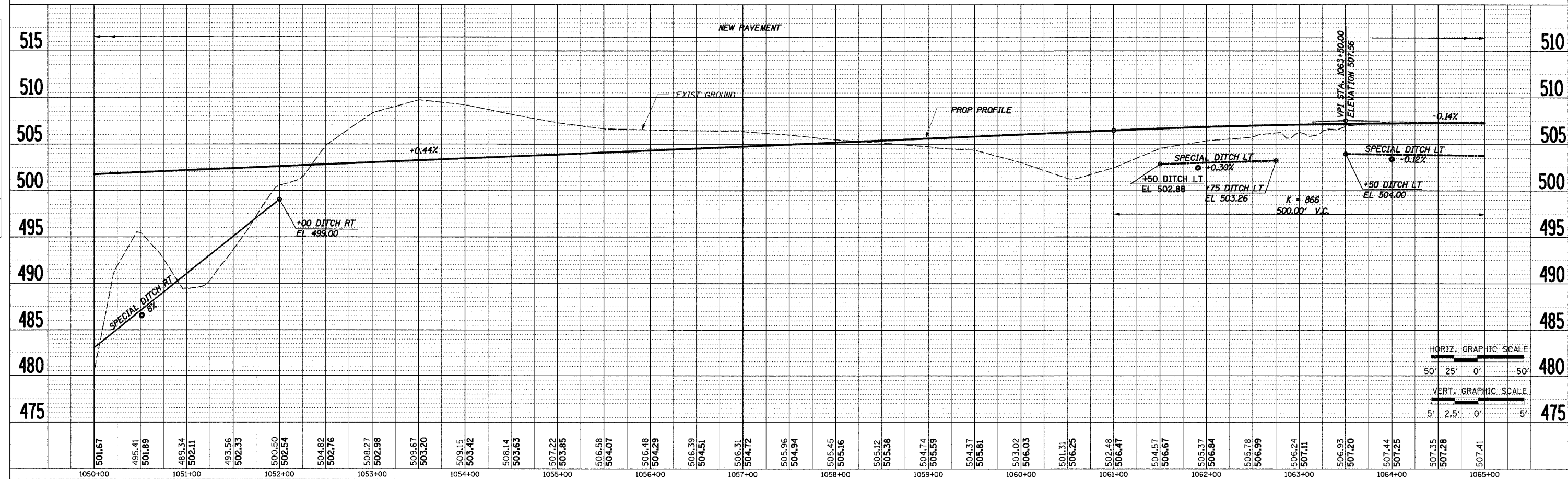
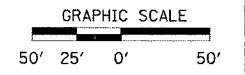


FAP RTE 328 (US45)
 PI Sta. 1058+16.44
 $\Delta = 25^\circ 18' 01''$ (RT)
 $D = 2^\circ 54' 38''$
 $T = 441.82'$
 $R = 1,968.50'$
 $L = 869.24'$
 $E = 48.97'$
 PC Sta. 1053+74.62
 PT Sta. 1062+43.85

SE RATE= 6.00%
 SE ATTAINED:
 Sta. 1051+86.21 to Sta. 1054+46.21
 Sta. 1061+72.26 to Sta. 1064+32.26

LEGEND:
 - PAVEMENT REMOVAL

BM #15 STA 1062+82.00, 35.50' RT.
 RR SPIKE IN POWER POLE
 N.E. QUAD, INTERSECTION TWP RD 975E/1625N
 EL 507.60



STA 1050+00 TO STA 1065+00

DATE	BY

DATE	BY

22/14/2004 7:04:10 AM