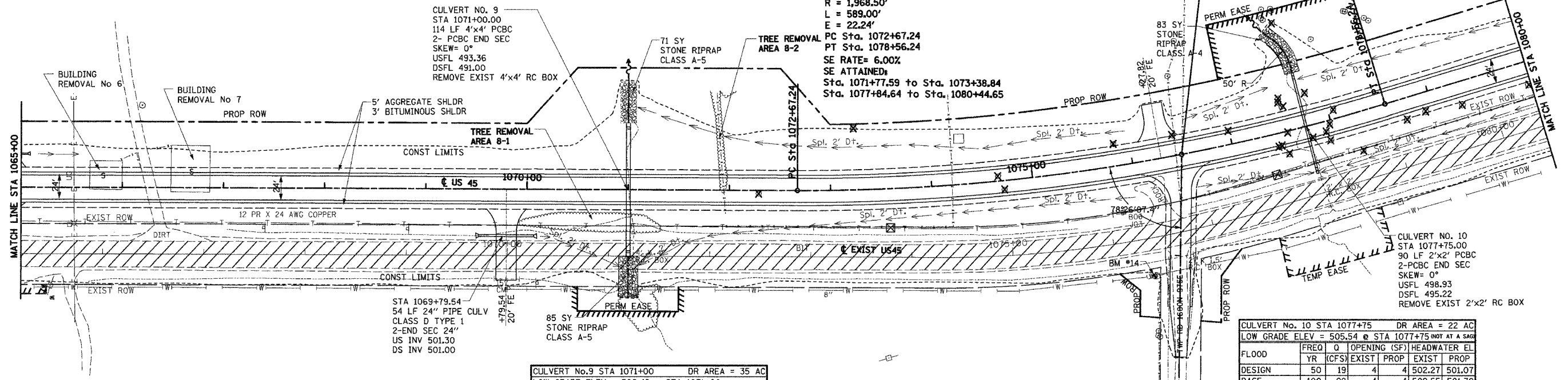


F.A.P. RTE.	SECTION	COUNTY	TOTAL SHEETS	SHEET NO.
328	5R, Y, RS-1	CLAY	376	40
STA. 1065+00		TO STA. 1080+00		
FED. ROAD DIST. NO. 7		ILLINOIS FED. AID PROJECT		

CONTRACT No 94367

FAP RTE 328 (US45)
 PI Sta. 1075+63.96
 $\Delta = 17^\circ 08' 37''$ (L.T.)
 $D = 2^\circ 54' 38''$
 $T = 296.71'$
 $R = 1,968.50'$
 $L = 589.00'$
 $E = 22.24'$
 PC Sta. 1072+67.24
 PT Sta. 1078+56.24
 SE RATE = 6.00%
 SE ATTAINED
 Sta. 1071+77.59 to Sta. 1073+38.84
 Sta. 1077+84.64 to Sta. 1080+44.65

STA EQUATION
 STA 10+00.00 (TR 975E 1600N)=
 STA 1076+49.25 (US45)



CULVERT No. 9 STA 1071+00 DR AREA = 35 AC
 LOW GRADE ELEV = 506.49 @ STA 1071+00 (NOT AT A SAG)

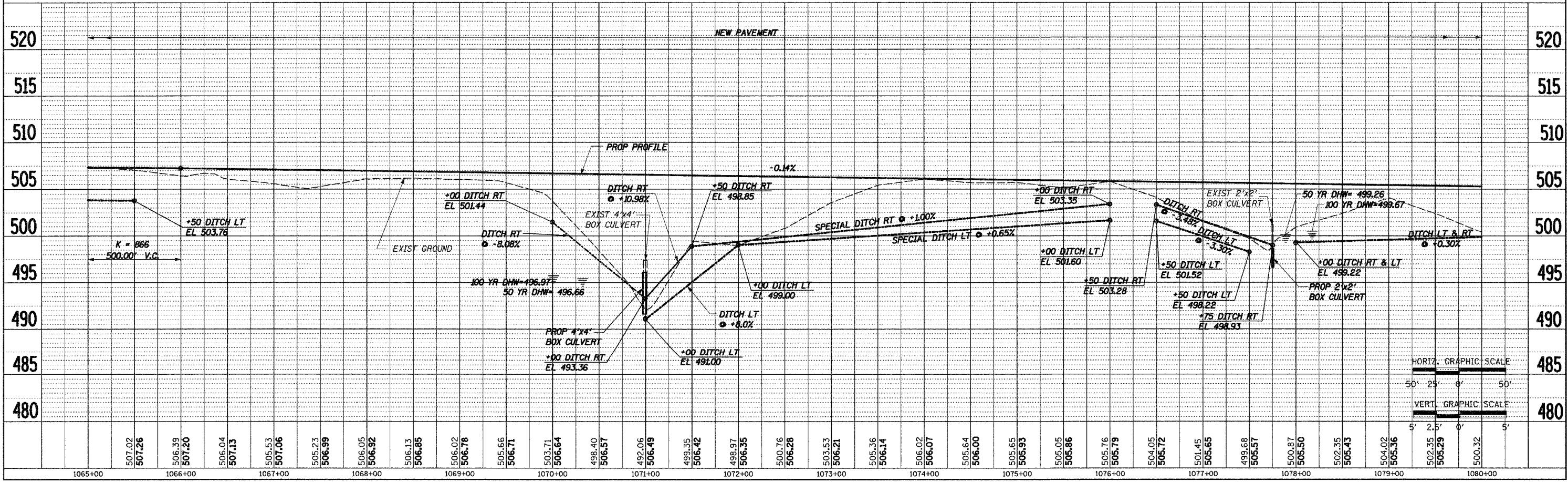
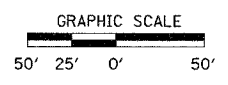
FLOOD	FREQ	Q	OPENING (SF)	HEADWATER EL
	YR	(CFS)	EXIST	PROF
DESIGN	50	63	16	16
BASE	100	72	16	16
OVERTOPPING	---	---	---	---
MAX CALC	500	95	16	16

CULVERT No. 10 STA 1077+75 DR AREA = 22 AC
 LOW GRADE ELEV = 505.54 @ STA 1077+75 (NOT AT A SAG)

FLOOD	FREQ	Q	OPENING (SF)	HEADWATER EL
	YR	(CFS)	EXIST	PROF
DESIGN	50	19	4	4
BASE	100	22	4	4
OVERTOPPING	---	---	---	---
MAX CALC	500	28	4	4

LEGEND:
 - PAVEMENT REMOVAL

BM #14 STA 1076+03.00, 113.50' RT.
 RR SPIKE IN POWER POLE N.W.
 QUAD. INTERSECTION TWP RD 975E/1625N
 EL 507.41



HORIZ. GRAPHIC SCALE

VERT. GRAPHIC SCALE

STA 1065+00 TO STA 1080+00

DATE: _____
 BY: _____
 SURVEYED: _____
 PLOTTED: _____
 CHECKED: _____
 REVISIONS: _____
 NO. _____

DATE: _____
 BY: _____
 PROFILE SURVEYED: _____
 PLOTTED: _____
 CHECKED: _____
 REVISIONS: _____
 NO. _____