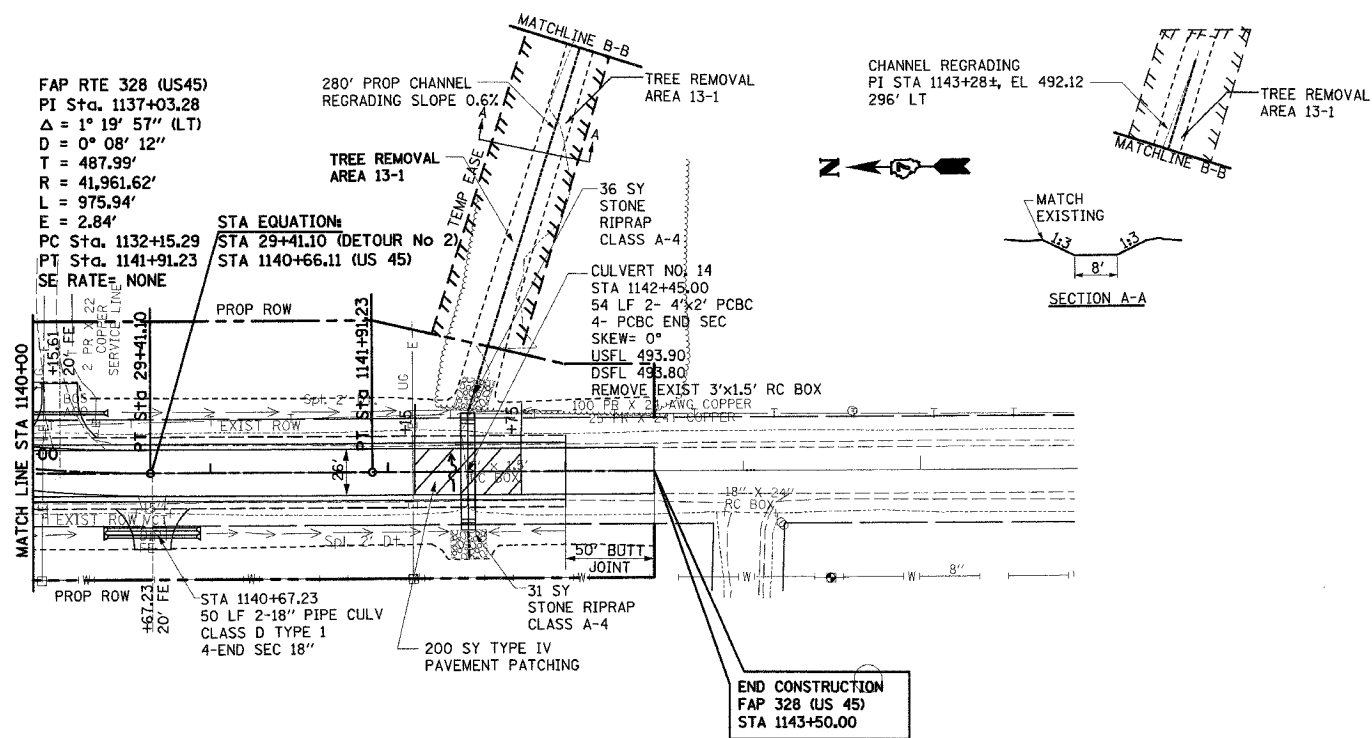


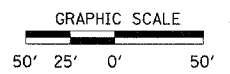
F.A.P. RTE.	SECTION	COUNTY	TOTAL SHEETS	SHEET NO.
328	5R, Y, RS-1	CLAY	376	45
STA. 1140+00		TO STA. 1155+00		
FED. ROAD DIST. NO. 7		ILLINOIS	FED. AID PROJECT	
CONTRACT No 94367				

FAP RTE 328 (US45)  
 PI Sta. 1137+03.28  
 $\Delta = 1^\circ 19' 57''$  (LT)  
 $D = 0^\circ 08' 12''$   
 $T = 487.99'$   
 $R = 41,961.62'$   
 $L = 975.94'$   
 $E = 2.84'$   
 PC Sta. 1132+15.29  
 PT Sta. 1141+91.23  
 SE RATE = NONE

STA EQUATION:  
 STA 29+41.10 (DETOUR No 2)  
 STA 1140+66.11 (US 45)

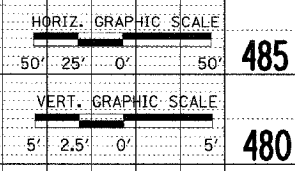
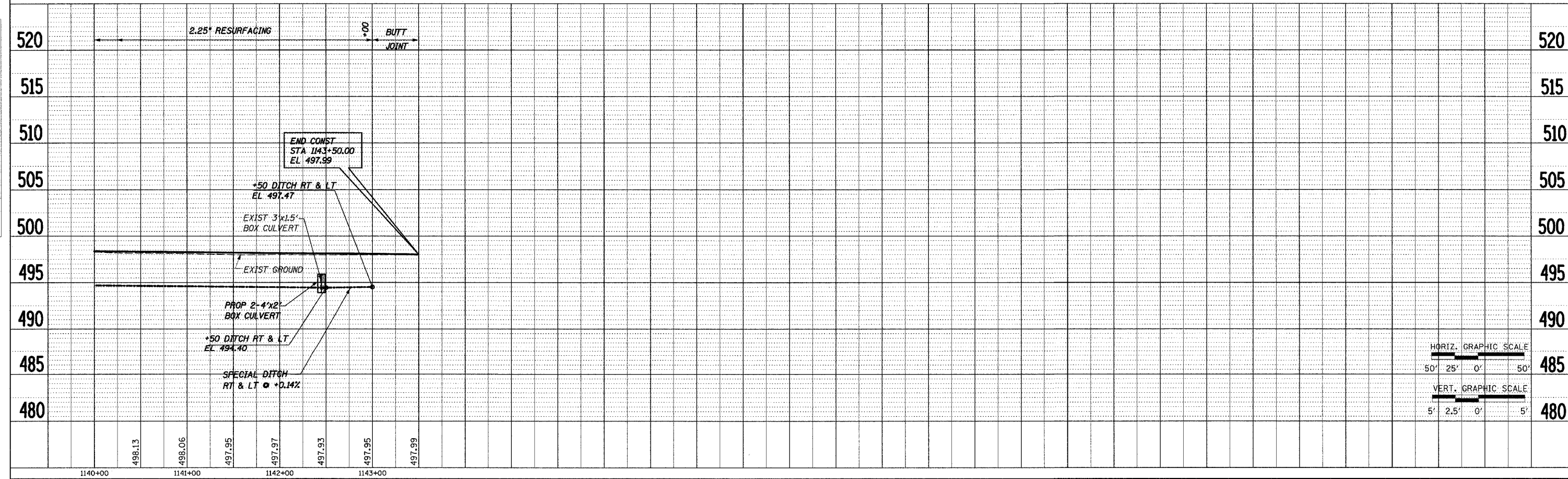


CULVERT No. 14 STA 1142+45		DR AREA = 50 AC				
LOW GRADE ELEV = 497.93 @ STA 1142+50						
FLOOD YR	FREQ (CFS)	Q	OPENING (SF)	HEADWATER EL		
		EXIST	PROP	EXIST	PROP	
DESIGN	50	60	4.5	16	498.13	495.84
BASE	100	68	4.5	16	498.17	496.01
OVERTOPPING	30	35	4.5	16	497.93	---
MAX CALC	500	89	4.5	16	498.26	496.42



DATE	BY	BY
PLAN	SURVEYED	ALIGNED
	NOTE BOOK	CHECKED
		FILED
		NO.

DATE	BY	BY
PROFILE	SURVEYED	GRADES
	NOTE BOOK	CHECKED
		FILED
		NO.



STA 1140+00 TO STA 1143+50

114045.DWG (A) 11/15/04 11:58 AM 12/14/2004 7:06:35 AM