

STATE OF ILLINOIS  
DEPARTMENT OF TRANSPORTATION  
DIVISION OF HIGHWAYS

# PLANS FOR PROPOSED FEDERAL HIGHWAY PROJECT

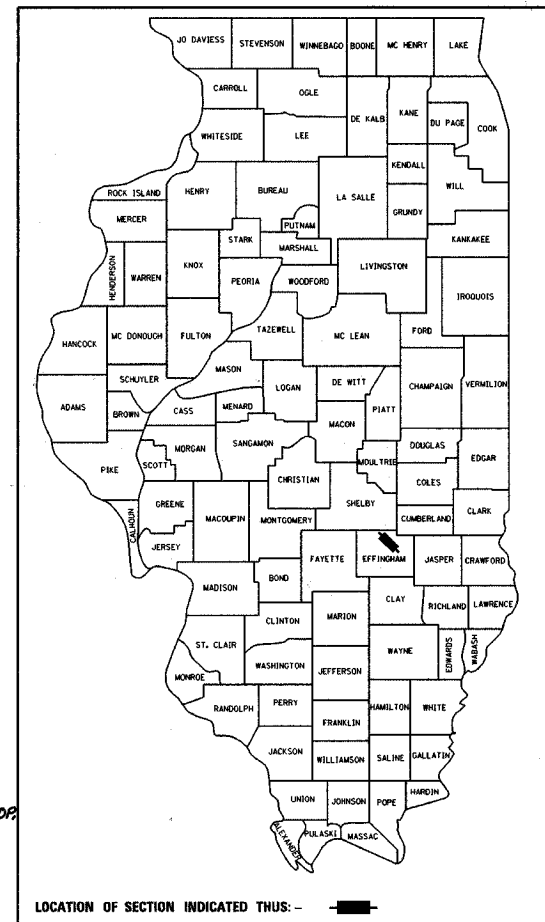
FOR INDEX OF SHEETS, SEE SHEET NO. 2  
FOR SUMMARY OF QUANTITIES, SEE SHEET NO'S 4-6E

F.A.P. RTE.	SECTION	COUNTY	TOTAL SHEETS	SHEET NO.
774		EFFINGHAM	373	1

FED. ROAD DIST. NO. 7 ILLINOIS FED. AID PROJECT  
\*107WRS-1, 107BY, 107BY-1 & 107B-2

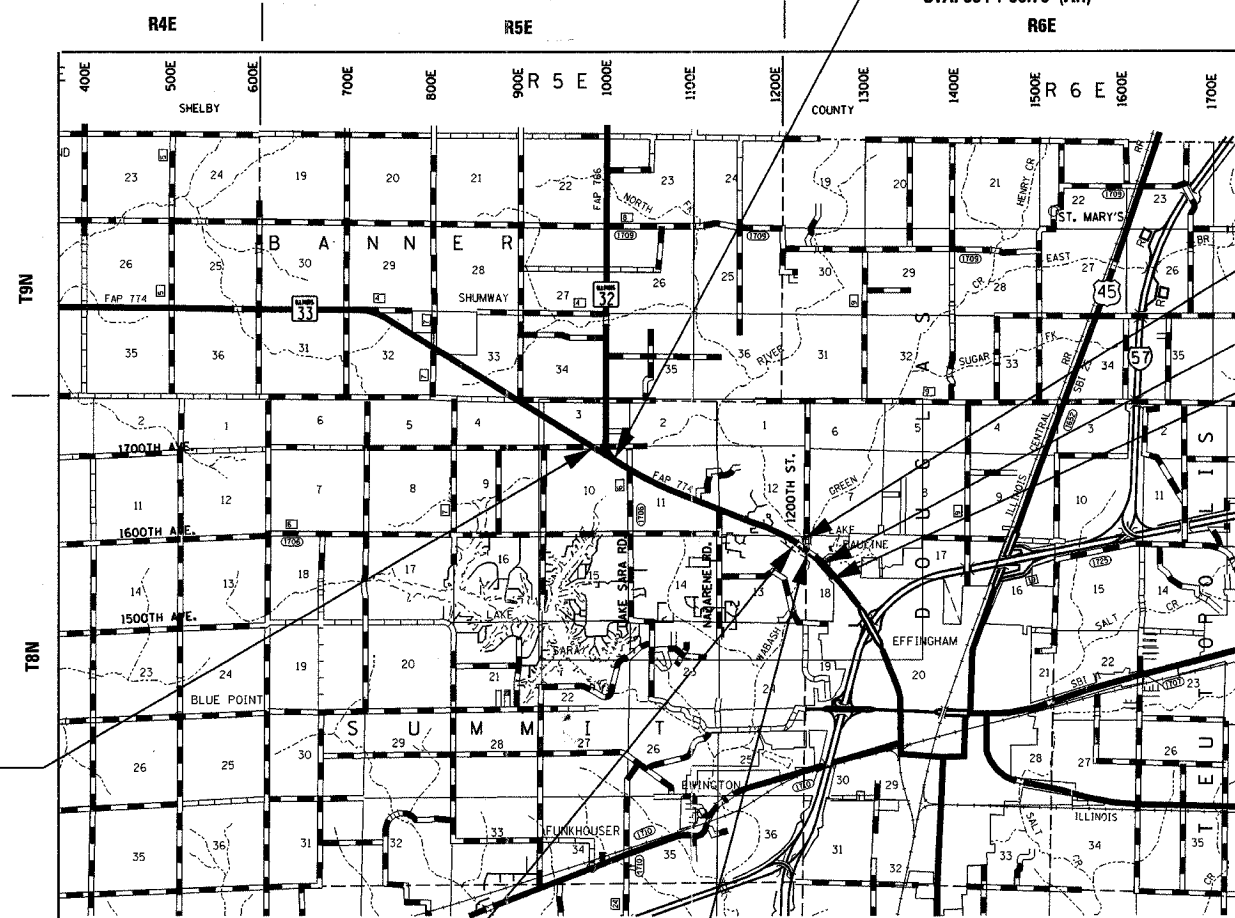
CONTRACT NO. 94827

D-97-012-01

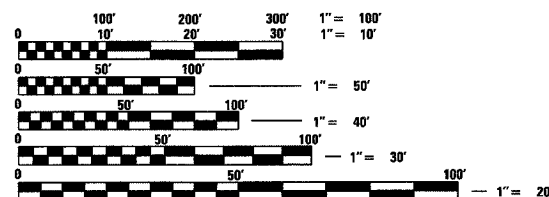


F.A.P. ROUTE 774 (ILLINOIS ROUTE 32/33)  
SECTION 107WRS-1, 107BY, 107BY-1 & 107B-2  
PROJECT: ACF-0774-(023)  
EFFINGHAM COUNTY  
C- 97-099-01

STATION EQUATION  
STA. 559 + 19.18 (BK) =  
STA. 884 + 96.78 (AH)



EXIST. SN 025-3161  
STRUCTURE NO. 025-3309 PROP.  
BRIDGE SECTION 107B-2  
BEGINS STA. 203 + 77.58  
ENDS STA. 204 + 90.24  
STATION EQUATION  
STA. 1039 + 00.00 (BK) =  
STA. 39 + 00.00 (AH)  
PROPOSED IMPROVEMENT ENDS  
STA. 46 + 80.05



FULL SIZE PLANS HAVE BEEN PREPARED USING STANDARD ENGINEERING SCALES, REDUCED SIZED PLANS WILL NOT CONFORM TO STANDARD SCALES, IN MAKING MEASUREMENTS ON REDUCED PLANS, THE ABOVE SCALES MAY BE USED.

FOR UNDERGROUND UTILITY LOCATIONS CALL J.U.L.I.E. TOLL FREE 1-800-892-0123 SUMMIT TOWNSHIP DOUGLAS TOWNSHIP

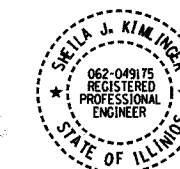
PROPOSED IMPROVEMENT BEGINS STA. 541 + 93.85

STRUCTURE NO. 025-0078  
BRIDGE SECTION 107BY  
BEGINS STA. 1010 + 18.59  
ENDS STA. 1012 + 82.59

STRUCTURE NO. 025-0077  
BRIDGE SECTION 107BY-1  
BEGINS STA. 1017 + 74.09  
ENDS STA. 1019 + 99.75

LOCATION MAP

GROSS AND NET LENGTH OF PROJECT = 17909 FT. = 3.39 MILES



Sheila J. Kimlinger  
SHEILA J. KIMLINGER, P.E.  
DATE: 3/25/04  
EXPIRES: 11/30/2005

STATE OF ILLINOIS  
DEPARTMENT OF TRANSPORTATION  
DIVISION OF HIGHWAYS

SUBMITTED MARCH 25, 2004

SG S. M...  
DISTRICT ENGINEER

20

ENGINEER OF PROJECT DEVELOPMENT AND IMPLEMENTATION

February 4, 2005  
Mike Hine  
ENGINEER OF DESIGN AND ENVIRONMENT

February 4, 2005  
Peter Moller  
DIRECTOR, DIVISION OF HIGHWAYS

FHWA \_\_\_\_\_ 20 \_\_\_\_\_  
DIVISION ADMINISTRATOR

**PRINTED BY AUTHORITY  
OF THE STATE OF ILLINOIS**

PROJECT ENGINEER: BILL STANLEY  
SQUAD LEADER:  
TELEPHONE: 217-342-8320

DESIGN DESIGNATION: 1803 (24) ARTERIAL 3.87 (FD 20)  
ADT = 13300 (2001)

**CONTRACT NO. 94827**  
SUMMIT TOWNSHIP  
DOUGLAS TOWNSHIP