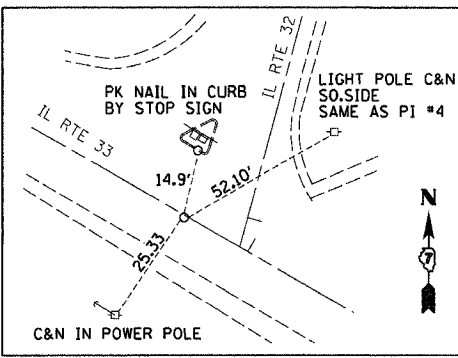
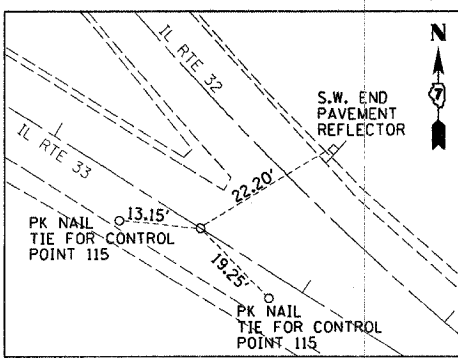


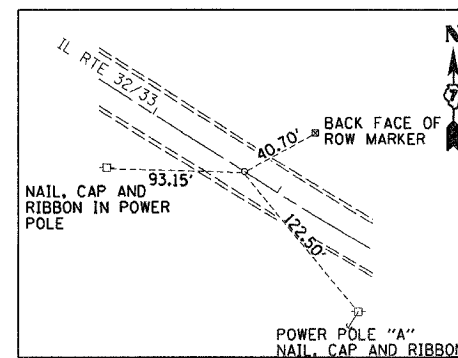
PC OF PROP. C-1 STA. 546+91.90
(MAG NAIL)



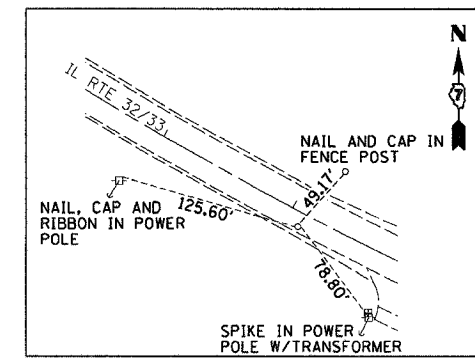
PI OF PROP. C-1 STA. 551+75.52
(MAG NAIL)



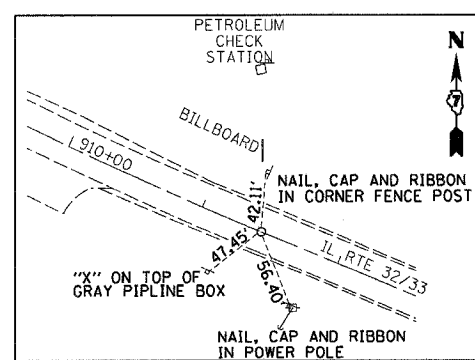
PT OF PROP. C-1 STA. 556+58.77
(MAG NAIL)



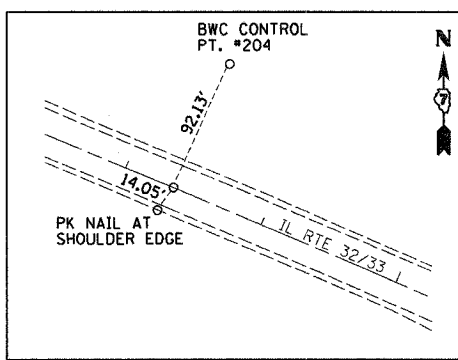
PC OF PROP. C-2 STA. 906+73.50
(MAG NAIL)



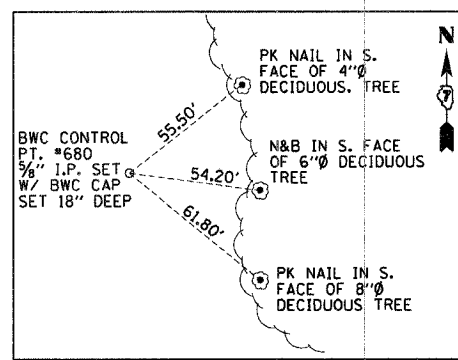
PI OF PROP. C-2 STA. 909+09.01
(MAG NAIL)



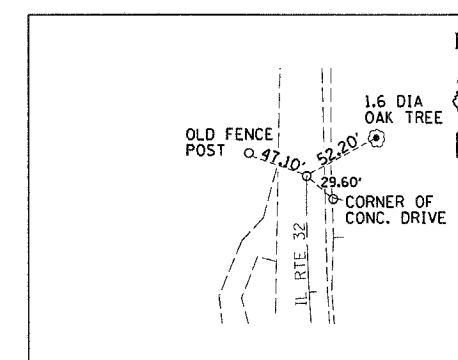
PT OF PROP. C-2 STA. 911+43.50
(MAG NAIL)



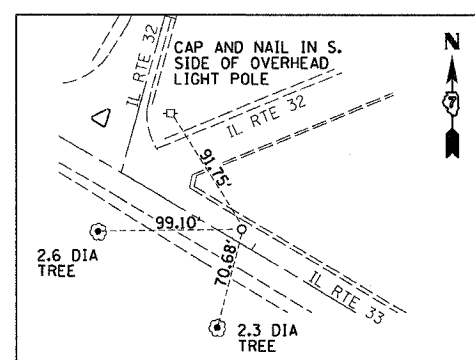
PC OF PROP. 5 STA. 988+35.24
(MAG NAIL)



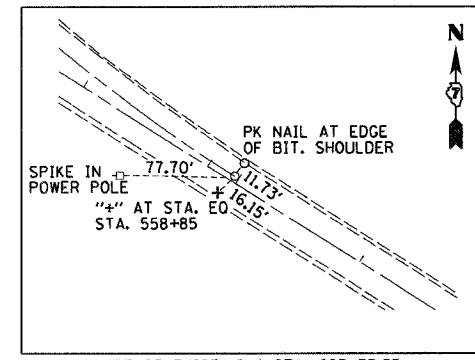
P.O.T. PROP. 5 STA. 1017+37.29 OFFSET 377.64' LT
(MAG NAIL)



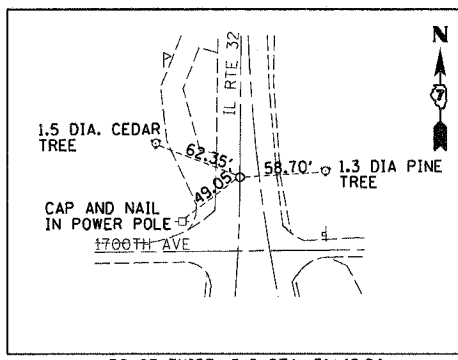
PC OF EXIST. C-4 STA. 872+20.78
(MAG NAIL)



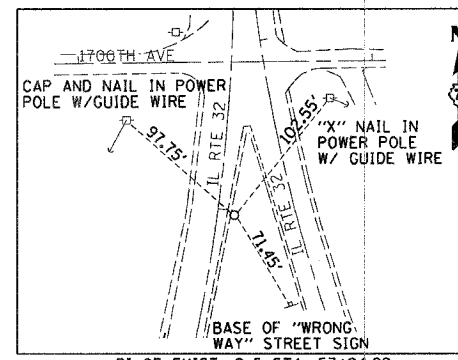
PI OF EXIST. C-4 STA. 878+53.19
(MAG NAIL)



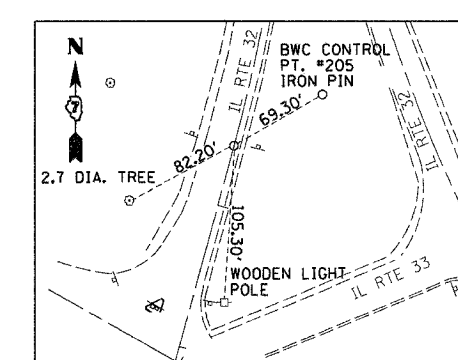
PT OF EXIST. C-4 STA. 883+73.55
(MAG NAIL)



PC OF EXIST. C-5 STA. 51+49.94
(MAG NAIL)



PI OF EXIST. C-5 STA. 53+04.92
(MAG NAIL)



PT OF EXIST. C-5 STA. 54+58.16
(MAG NAIL)

BM #P-83
55' LT, STA. 545+22, ELEV. 611.78
PERMANENT SURVEY MARKER

BM #5
38' RT, STA. 933+96, ELEV. 610.82
RR SPIKE IN POWER POLE

BM #8
78' RT, STA. 981+01, ELEV. 600.57
RR SPIKE IN POWER POLE

BM #12
18' RT, STA. 1030+71, ELEV. 570.76
CHISELED "D" BACK OF GUTTER AT
SOUTHWEST CORNER OF DROP INLET

BM #50
37' RT, STA. 558+53, ELEV. 615.45
RR SPIKE IN POWER POLE

BM #53
25' RT, STA. 940+57, ELEV. 608.01
CHISELED "D" SOUTHEAST CORNER
CONCRETE HEADWALL

BM #9
121' RT, STA. 991+87, ELEV. 558.84
CHISELED "X" IN NORTH BOLT OF FIRE
HYDRANT AT WABASH RIVERHILLS AND
IL RTE 32/33

BM #59
56' LT, STA. 47+13, ELEV. 598.48
CHISELED "D" SOUTH EDGE OF CONCRETE
PARKING LOT OF EFFINGHAM PLAZA
10.5' SOUTH OF PLAZA SIGN

BM #51
98' RT, STA. 896+20, ELEV. 604.03
CHISELED "D" AT CORNER OF CONCRETE
PARKING LOT NEAR AMOCO GAS STATION SIGN

BM #6
30' RT, STA. 951+33, ELEV. 606.30
CHISELED "D" SOUTH END CONCRETE BOX CULVERT

BM #250078
22' RT, STA. 1010+31, ELEV. 543.53
CHISELED "D" ABOVE BRIDGE NAME PLATE

BM #4
39' RT, STA. 914+26, ELEV. 611.19
RR SPIKE IN POWER POLE

BM #7
36' RT, STA. 971+17, ELEV. 606.61
RR SPIKE IN POWER POLE

BM 250077
22' RT, STA. 1017+17, ELEV. 543.66
CHISELED "D" ABOVE BRIDGE NAME PLATE

BM #52
39' RT, STA. 924+19, ELEV. 611.84
RR SPIKE IN POWER POLE

BM #55
45' RT, STA. 974+88, ELEV. 605.86
PAINT MARK ON NORTH CAP BOLT OF
FIRE HYDRANT AT LYNN ACRES ROAD AND
IL RTE 32/33

BM #60
79' RT, STA. 1024+86, ELEV. 548.63
CHISELED "X" ON NORTH FLANGE BOLT
OF FIRE HYDRANT

REVISIONS	
NAME	DATE

ILLINOIS DEPARTMENT OF TRANSPORTATION

CONTROL TIES
AND BENCHMARKS
SHEET 1 OF 2

DATE 5/2/02

DRAWN BY NJV
CHECKED BY TLS