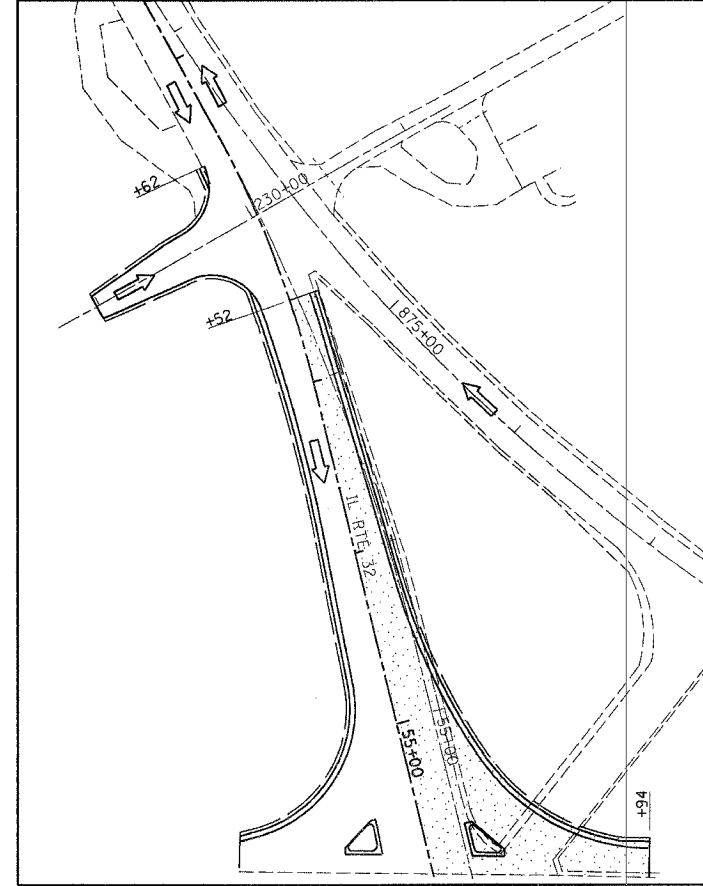
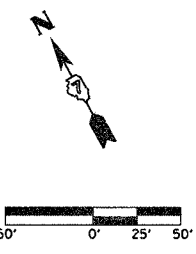
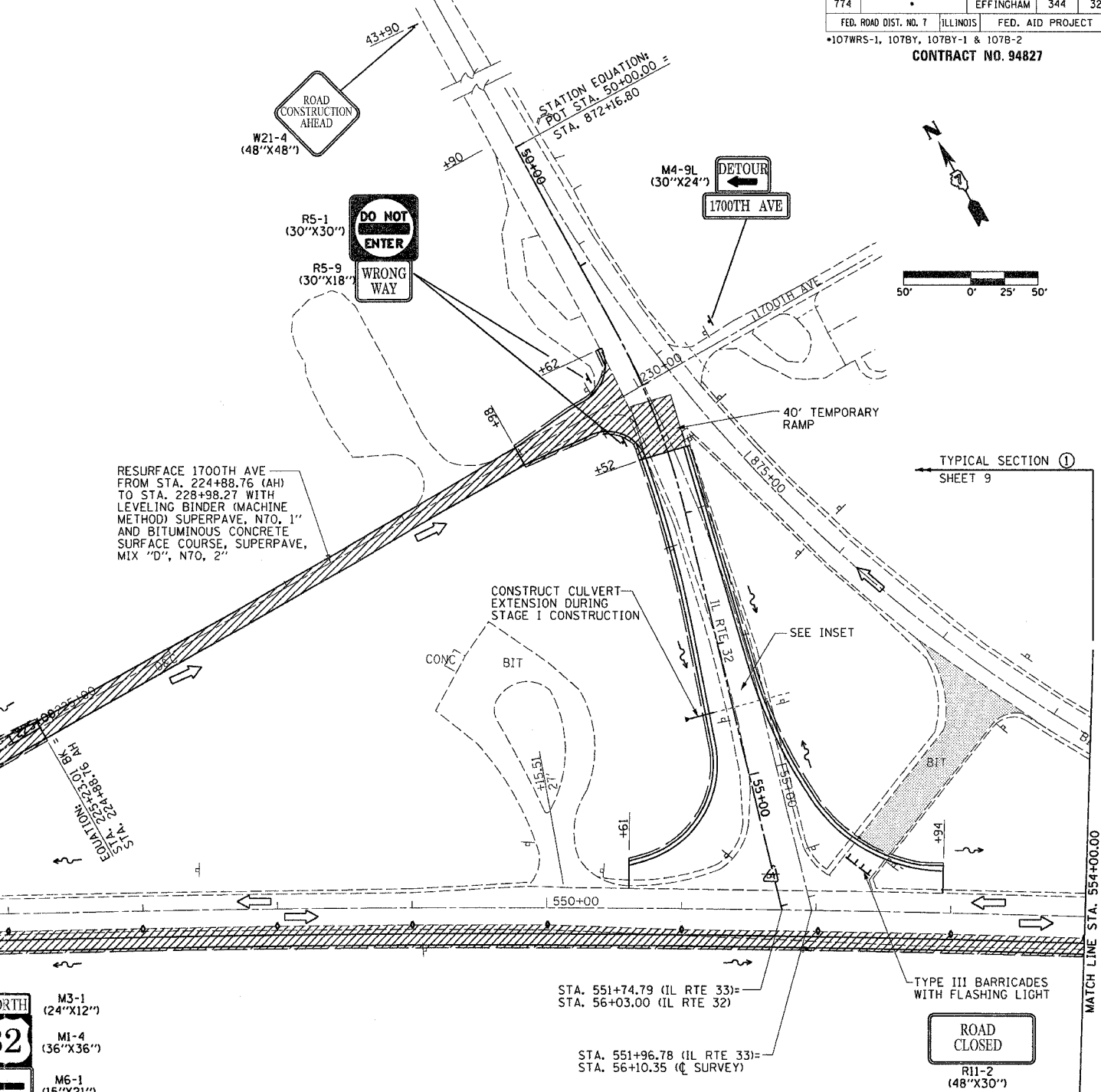


STAGE 1A



STAGE 1B



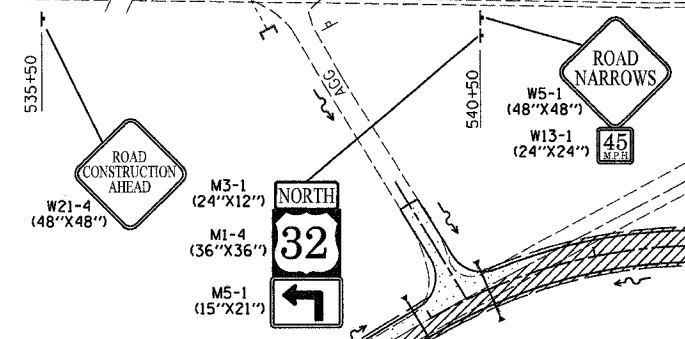
TYPICAL SECTION ①
SHEET 9

JACK NEW ACROSS ROAD CULVERT IN PLACE DURING STAGE I CONSTRUCTION

STA. 544+65.39 (IL RTE 33) = STA. 223+07.85 (RELOCATED 1700TH AVE)

STA. 543+73.14 (IL RTE 33) = STA. 222+00.92 (1700TH AVE)

PROPOSED PROJECT BEGINS STA. 541+93.85



- NOTES:
- PRE-STAGE I: PRIOR TO MAINLINE WIDENING OPERATIONS, MILL AND PLACE LEVELING BINDER PER THE TYPICALS FROM STA. 541+93.85 TO STA. 40+10.00.
 - MAINTAIN 2 LANE 2 WAY TRAFFIC ON IL ROUTE 32/33 THROUGHOUT DURATION OF STAGE I CONSTRUCTION.
 - FOR PROPOSED TRAFFIC CONTROL TYPICAL SECTIONS, SEE SHEETS 9, 10 AND 11 OF 32.
 - ALL TRAFFIC CONTROL ITEMS FOR STAGE I TO BE INCLUDED IN THE COST OF "TRAFFIC CONTROL AND PROTECTION (SPECIAL), LOCATION 1.", EXCEPT THE FOLLOWING WILL BE PAID FOR SEPARATELY:
 - TEMPORARY CONCRETE BARRIERS (STATE OWNED)
 - TEMPORARY TRAFFIC BARRIER TERMINAL, TYPE 3
 - ALL TEMPORARY PAVEMENT MARKINGS
 - TEMPORARY RAMPS
 - UTILIZE STAGE CONSTRUCTION TO MAINTAIN ACCESS TO ALL PRIVATE AND COMMERCIAL ENTRANCES AND PUBLIC ACCESS ROADWAYS DURING STAGE I CONSTRUCTION.

TEMPORARY RAMP
STA. 52+12.00 - STA. 52+52.00 124 SO YD

- LEGEND
- STAGE I: CONSTRUCT RELOCATED 1700TH AVE AND RESURFACE EXISTING 1700TH AVE FROM 224+89.00 (AH) TO STA. 228+98.00
 - STAGE 1A: CONSTRUCT SOUTHBOUND IL RTE 32 FROM 1700TH AVE TO IL RTE 33.
 - STAGE 1B: CONSTRUCT NORTHBOUND IL RTE 32 FROM 1700TH AVE TO IL RTE 32 AND UNNAMED RD RETURN.
 - STAGE I REMOVAL
 - BARRICADES, TYPE II

REVISIONS	
NAME	DATE

ILLINOIS DEPARTMENT OF TRANSPORTATION

TRAFFIC CONTROL
STAGE I CONSTRUCTION
SHEET 1 OF 32

DATE 8/02

DRAWN BY ASB
CHECKED BY RDW