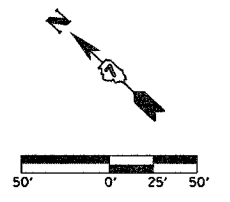
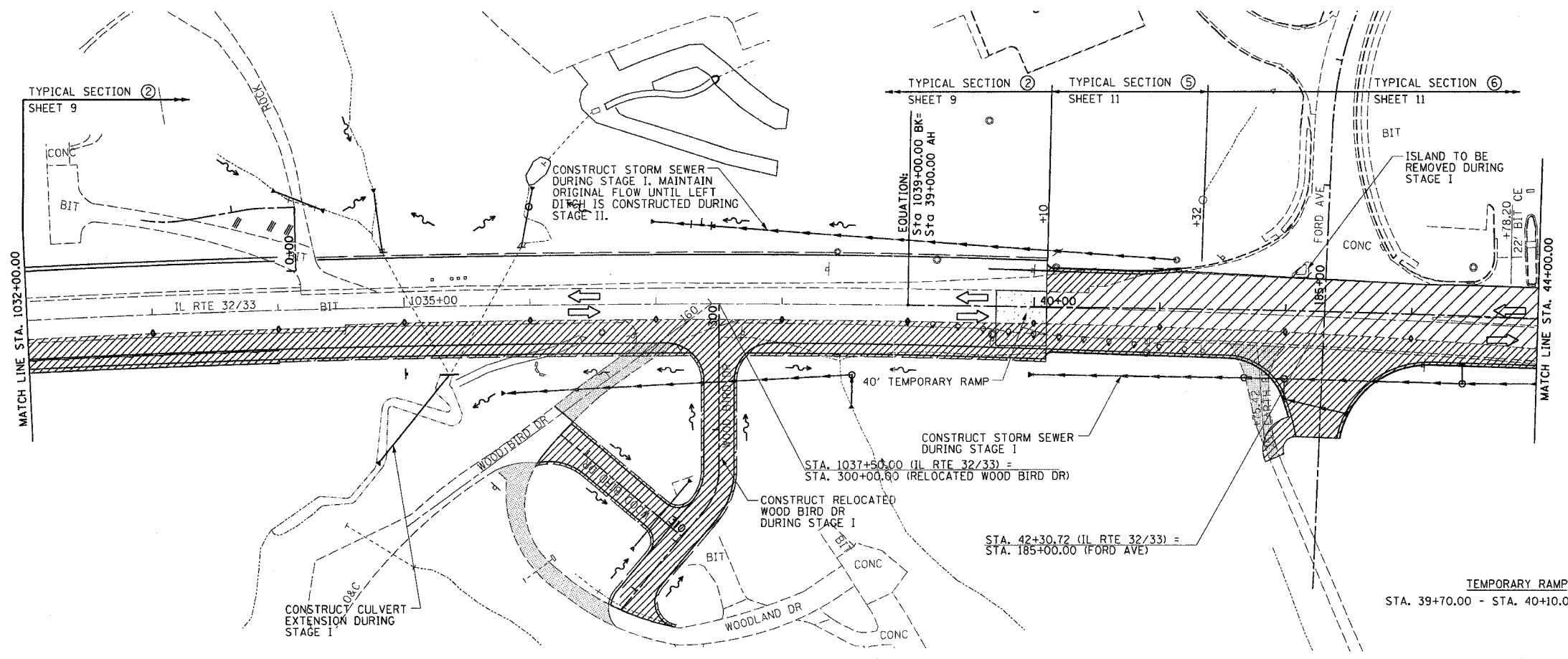
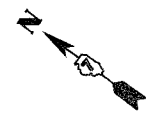
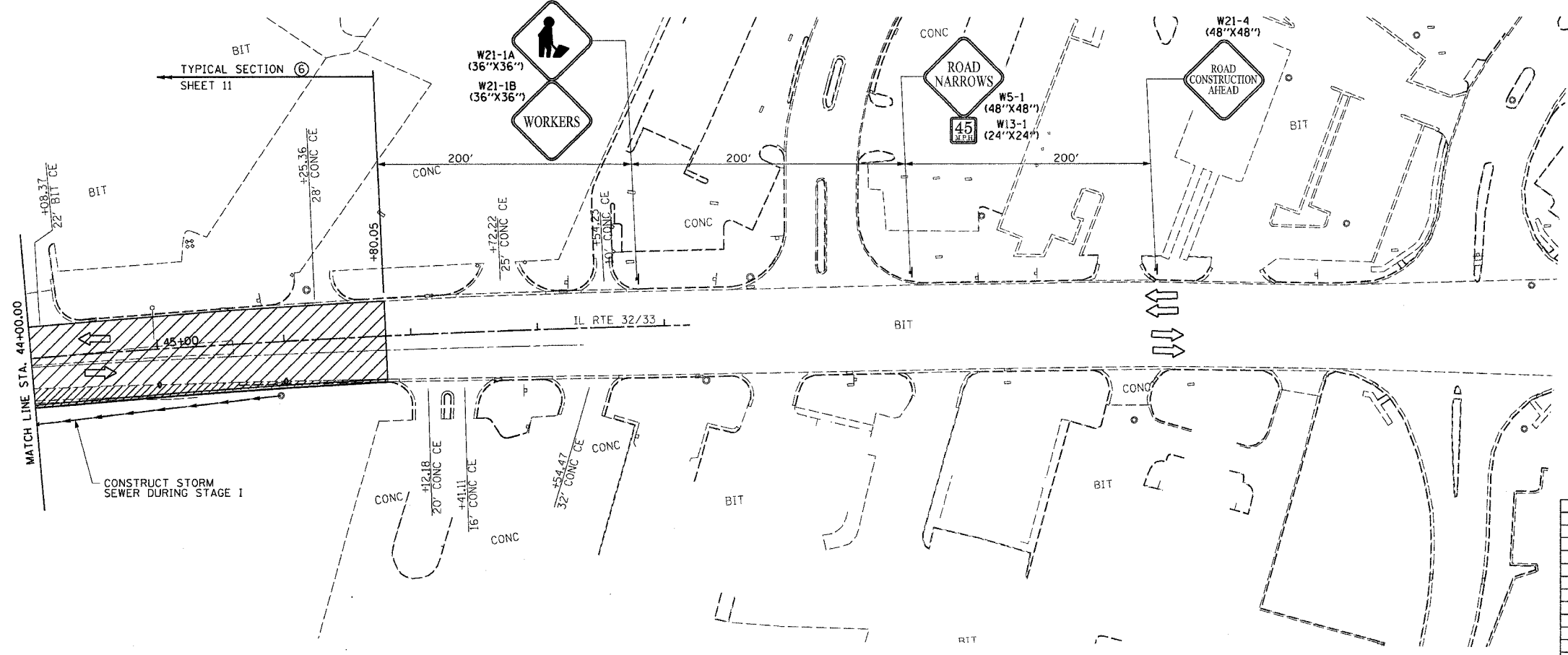


F.A.P. RTE.	SECTION	COUNTY	TOTAL SHEETS	SHEET NO.
774		EFFINGHAM	344	39
FED. ROAD DIST. NO. 7		ILLINOIS	FED. AID PROJECT	
*107WRS-1, 107BY, 107BY-1 & 107B-2				
CONTRACT NO. 94827				



- SHEET NOTES:**
1. FROM STA. 40+10 TO END OF PROJECT THE CONTRACTOR IS TO CONFINE CONSTRUCTION TO ONE SIDE OF THE ROAD AT A TIME
 2. FROM STA. 40+10.00 TO STA. 46+80.05: THE FOLLOWING CONSTRUCTION TO BE PERFORMED UNDER TRAFFIC UTILIZING FLAGGERS. DURING STAGE I WILL EXISTING PAVEMENT, APPLY LEVELING BINDER AND SURFACE COURSE IN CONJUNCTION WITH WIDENING AND CURB AND GUTTER ON SOUTH SIDE OF IL RTE 32/33.
 3. REMOVE WOODBIRD AND WOODLAND DRIVE PAVEMENT DURING STAGE I. SEE SHEET 92 FOR REMOVAL LIMITS.



- LEGEND**
- STAGE I REMOVAL
 - ▨ STAGE I CONSTRUCTION
 - BARRICADES, TYPE II

REVISIONS	
NAME	DATE

ILLINOIS DEPARTMENT OF TRANSPORTATION

**TRAFFIC CONTROL
STAGE I CONSTRUCTION
SHEET 8 OF 32**

DRAWN BY ASB
CHECKED BY RDW

DATE 8/02