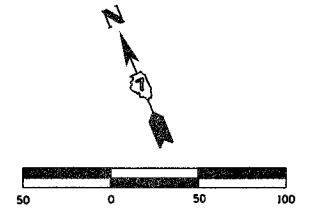
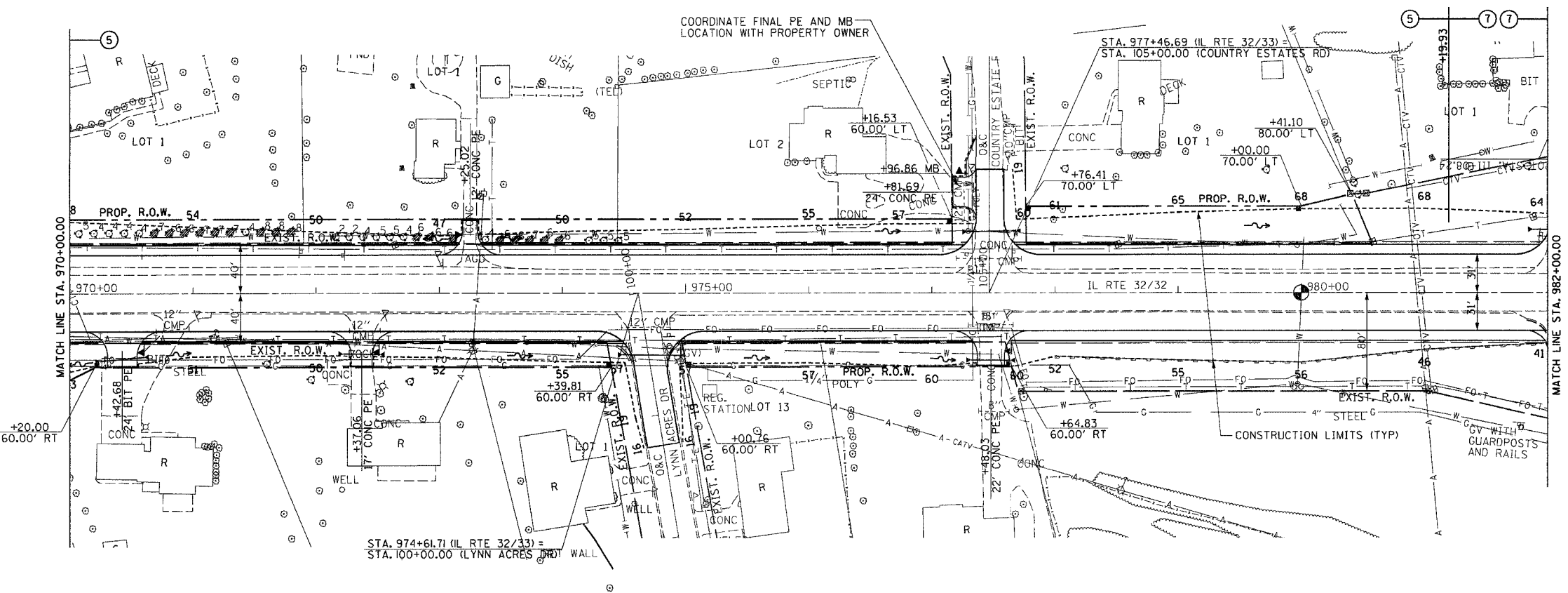


F.A.P. RTE.	SECTION	COUNTY	TOTAL SHEETS	SHEET NO.
774		EFFINGHAM	344	73
STA. 970+00.00 TO STA. 982+00.00				
FED. ROAD DIST. NO. 7 ILLINOIS FED. AID PROJECT				
• 107WRS-1, 107BY, 107BY-1 & 107B-2				
CONTRACT NO. 94827				



PLAN	SURVEYED	BY	DATE
NO. _____	_____	_____	_____
NOTE BOOK NO. _____	_____	_____	_____
DATE FILED _____	_____	_____	_____



- PERMANENT SURVEY MARKERS, TYPE I**
STA. 980+00.00 1 EACH
- VALVE BOXES TO BE ADJUSTED**
LT STA. 979+96.71 1 EACH
- COMBINATION CONCRETE CURB AND GUTTER REMOVAL**
RT STA 981+83.27 - STA. 982+01.11 86'
- GUTTER REMOVAL**
LT STA. 98+75.00 - STA. 99+61.31 86'
RT STA. 98+75.00 - STA. 99+56.50 82'
TOTAL 168'
- BRICK WALL REMOVAL**
RT STA. 974+44.08 - 974+54.73 16'
RT STA. 974+85.93 - 974+94.43 15'
TOTAL 31'

PROFILE	SURVEYED	BY	DATE
NO. _____	_____	_____	_____
NOTE BOOK NO. _____	_____	_____	_____
DATE FILED _____	_____	_____	_____

