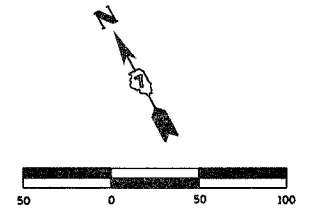


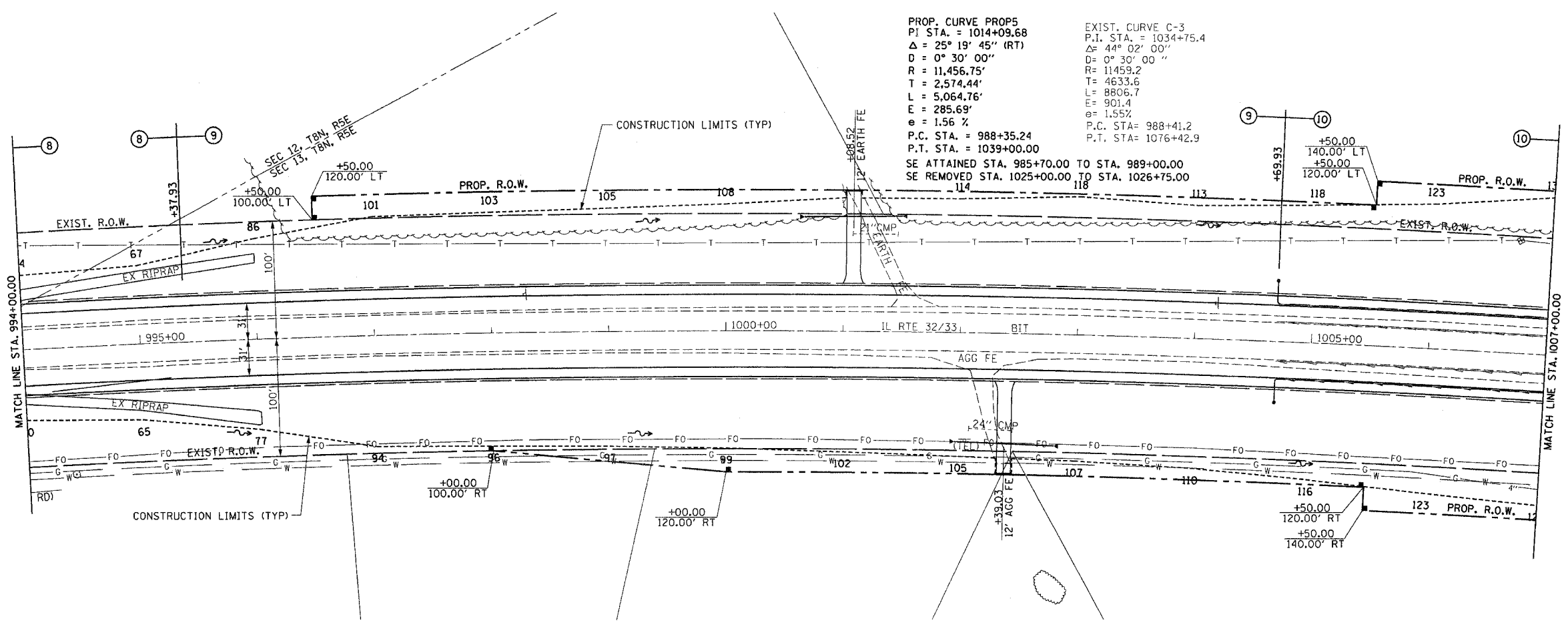
F.A.P. RTE.	SECTION	COUNTY	TOTAL SHEETS	SHEET NO.
774		EFFINGHAM	344	75
STA. 994+00.00 TO STA. 1007+00.00				
FED. ROAD DIST. NO. 7 ILLINOIS FED. AID PROJECT				
• 107WRS-1, 107BY, 107BY-1 & 107B-2				
CONTRACT NO. 94827				



PLAN	SURVEYED	DATE
NOTE BOOK	PLOTTED	
NO.	CHECKED	
	BY	
	DATE	

PROP. CURVE PROPS
 P.I. STA. = 1014+09.68
 $\Delta = 25^\circ 19' 45''$ (RT)
 $D = 0^\circ 30' 00''$
 $R = 11,456.75'$
 $T = 2,574.44'$
 $L = 5,064.76'$
 $E = 285.69'$
 $e = 1.55\%$
 P.C. STA. = 988+35.24
 P.T. STA. = 1039+00.00
 SE ATTAINED STA. 985+70.00 TO STA. 989+00.00
 SE REMOVED STA. 1025+00.00 TO STA. 1026+75.00

EXIST. CURVE C-3
 P.I. STA. = 1034+75.4
 $\Delta = 44^\circ 02' 00''$
 $D = 0^\circ 30' 00''$
 $R = 11,459.2$
 $T = 4633.6$
 $L = 8806.7$
 $E = 901.4$
 $e = 1.55\%$
 P.C. STA. = 988+41.2
 P.T. STA. = 1076+42.9



PIPE UNDERDRAIN REMOVAL
 LT STA. 1004+70.00 - STA. 1007+00.00 230'
 RT STA. 1004+70.00 - STA. 1007+00.00 230'
 TOTAL 460'

PIPE UNDERDRAINS FABRIC LINE TRENCH, 6"
 LT STA. 1004+69.93 - STA. 1007+00.00 230'
 RT STA. 1004+69.93 - STA. 1007+00.00 230'
 TOTAL 460'

PIPE UNDERDRAINS 6" (SPECIAL)
 LT STA. 1004+69.93 17'
 RT STA. 1004+69.93 17'
 TOTAL 34'

CONCRETE HEADWALL FOR PIPE DRAINS
 LT STA. 1004+69.93 1 EACH
 RT STA. 1004+69.93 1 EACH
 TOTAL 2 EACH

PROFILE	SURVEYED	DATE
NOTE BOOK	PLOTTED	
NO.	CHECKED	
	BY	
	DATE	

